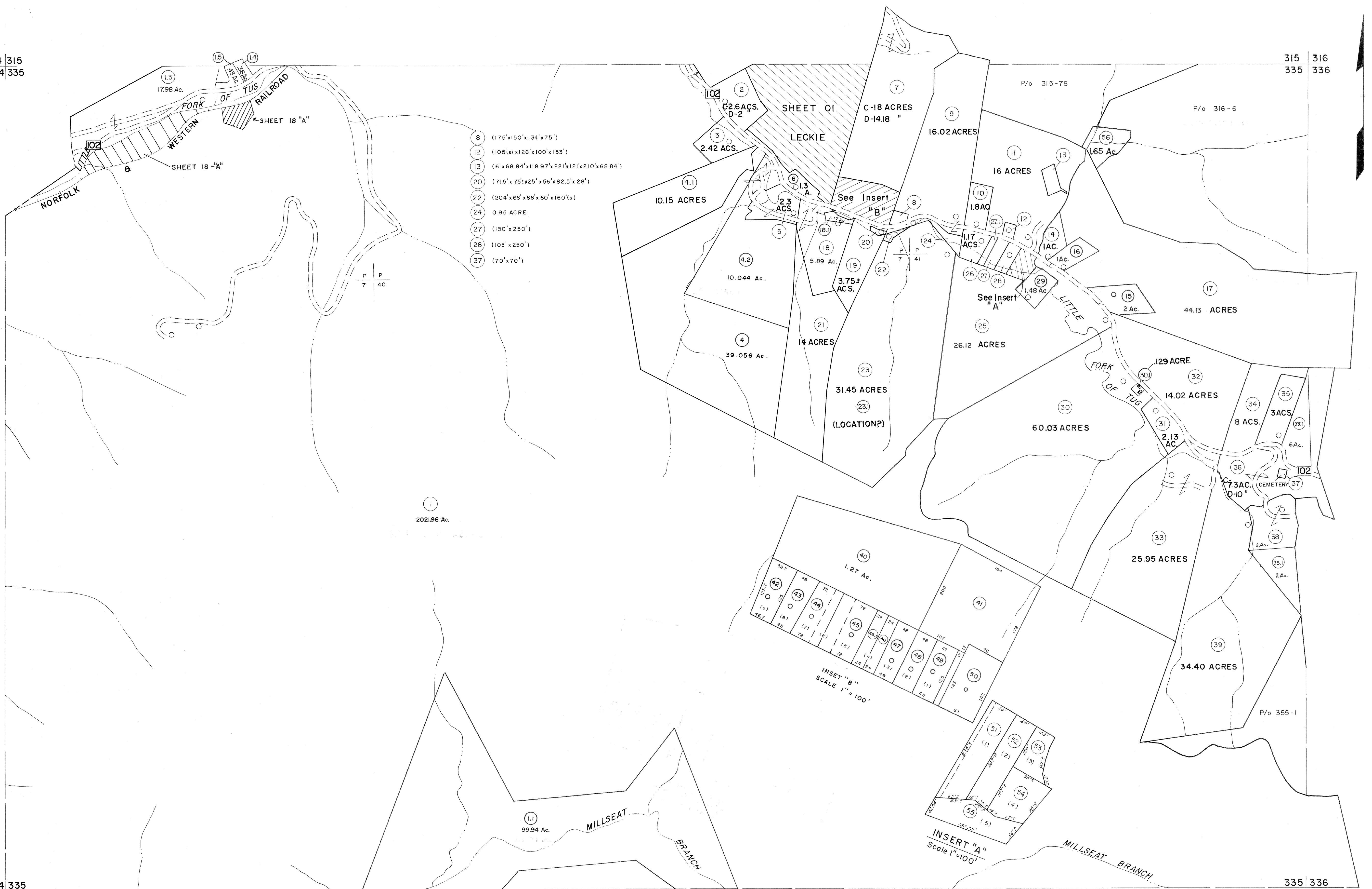


314 315  
334 335

315 316  
335 336

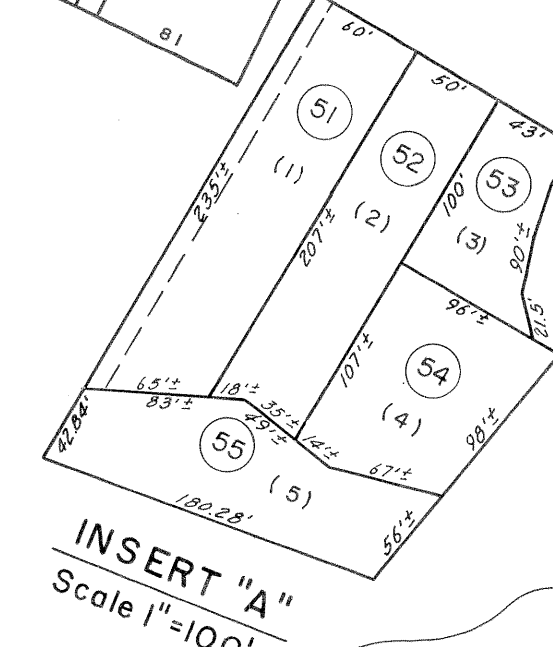
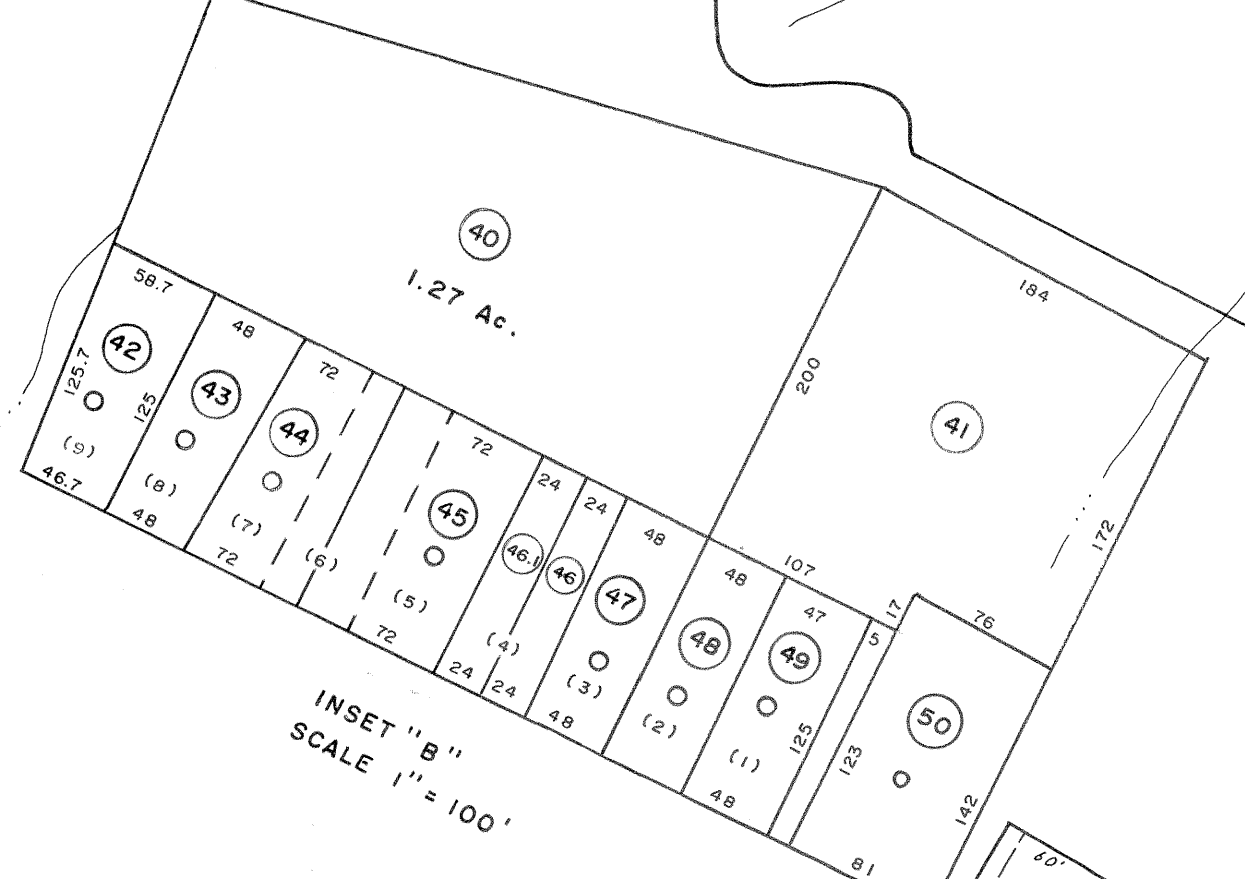
334 335  
354 355

335 336  
355 356



- 8 (175'x150'x134'x75')
- 12 (105'x126'x100'x153')
- 13 (6'x68.84'x118.97'x221'x121'x210'x68.84')
- 20 (71.5'x75'x25'x56'x82.5'x28')
- 22 (204'x66'x66'x60'x160'x)
- 24 0.95 ACRE
- 27 (150'x250')
- 28 (105'x250')
- 37 (70'x70')

1  
202196 Ac.



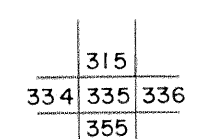
Legend

Property line	-----	Original lot line	-----
Edge of pavement or roadway	-----	Deed lot number	(15)
Corporation line	-----	Parcel or index number	(29)
District line	-----	Improvement	o
County line	-----	Railroad	-----

Revisions

1	4-15-64	9	S&H	12/31/05	17
2	(2-9-74) OAE	10	S&H	8/25/06	18
3	REV. TO 7-1-83 NCS	11	H&S	6-18-07	19
4	July 1985 JEC	12			20
5	O.G.I.S 5-15-95 J.E.B	13			21
6	SLS INC. 1/4/99 DSW	14			22
7	ESI 12/5/02 REK	15			23
8	5/23/04 S&H	16			24

KEY MAP



**McDOWELL COUNTY**  
STATE OF WEST VIRGINIA  
Office of Assessor

DISTRICT

**ADKIN**

SHEET NO: 335

Date, Aerial Photography: April, 1961 Date, Map: July, 1962  
Photo No: Scale: 1"=400'

For Tax Purposes Only  
Prepared by  
**MICHAEL BAKER, JR., INC.**  
Consulting Engineers  
Rochester, Pennsylvania