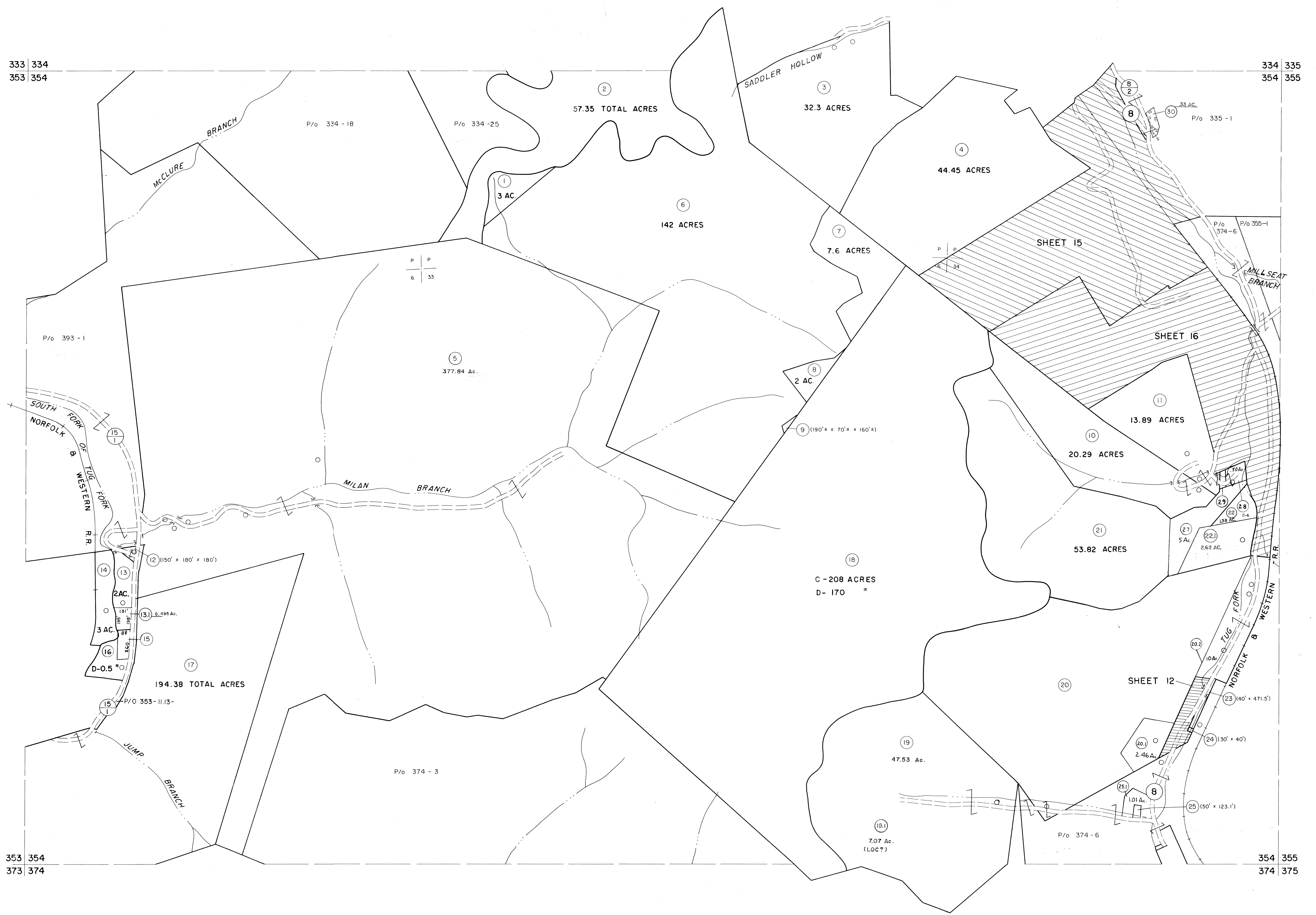


333 334  
353 354

334 335  
354 355

353 354  
373 374

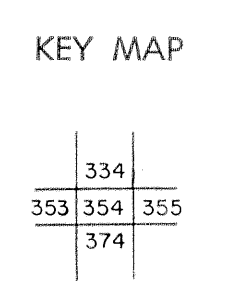
354 355  
374 375



For Tax Purposes Only  
 Prepared by  
**MICHAEL BAKER, JR., INC.**  
 Consulting Engineers  
 Rochester, Pennsylvania

Legend	
Property line	Original lot line
Edge of pavement or roadway	Deed lot number
Corporation line	Parcel or index number
District line	Improvement
County line	Railroad

Revisions				
1	4-15-64	9	ESI	12/5/02 REK
2	12-9-74	10		
3	To 7-1-83 C.P.	11		
4	July 1985	12		
5	Revised 6-7-88	13		
6	O.G.I.S 5-15-95 J.E.B.	14		
7	O.G.I.S 12-1-96 J.E.B.	15		
8	SLS INC. 6/26/98 JWM	16		



**McDOWELL COUNTY**  
 STATE OF WEST VIRGINIA  
 Office of Assessor

DISTRICT	ADKIN
SHEET NO:	354
Date, Aerial Photography:	April, 1961
Photo No:	
Date, Map:	July, 1962
Scale:	1" = 400'