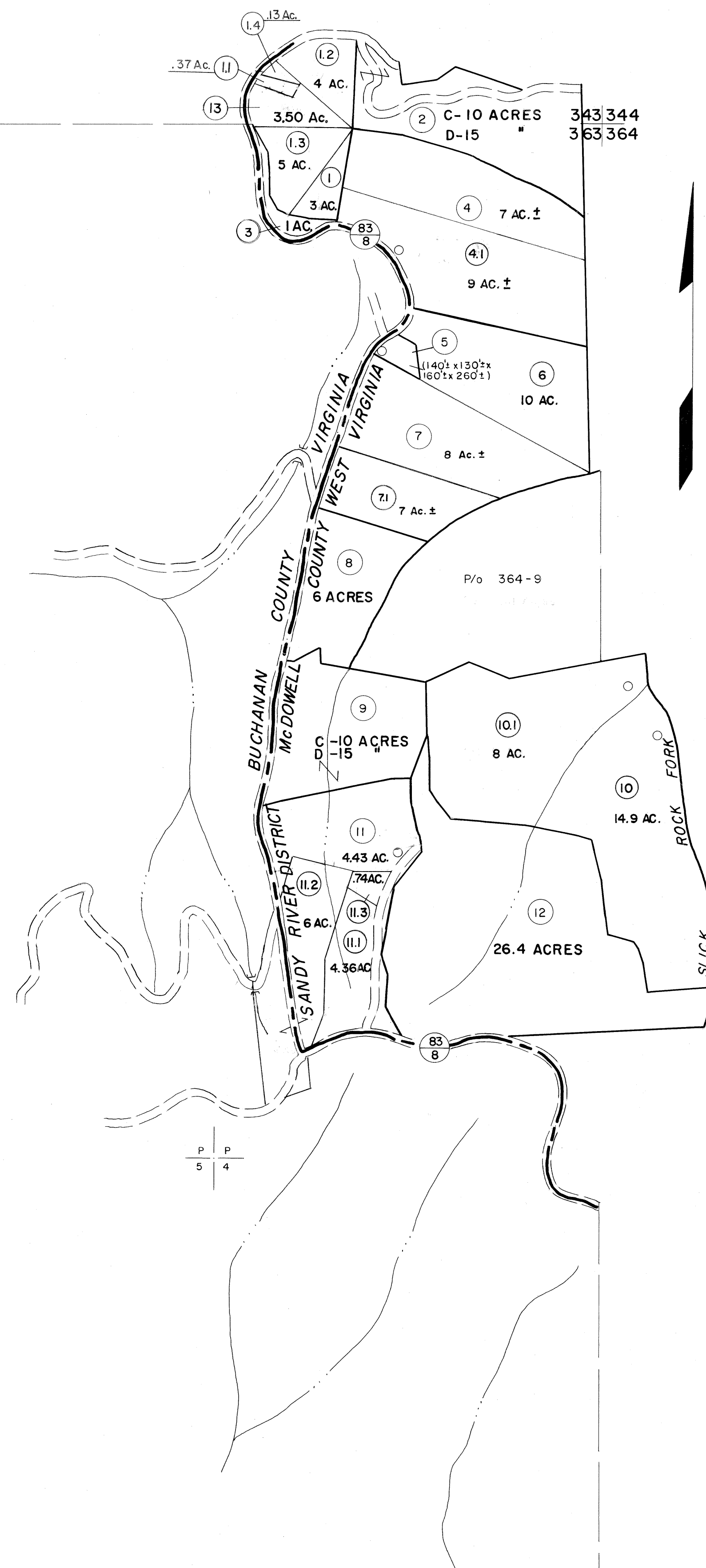


343  
363

363



P 5  
P 4

363 364

For Tax Purposes Only

Prepared by  
MICHAEL BAKER, JR., INC.  
Consulting Engineers  
Rochester, Pennsylvania

Legend	
Property line	—————
Edge of pavement or roadway	- - - - -
Corporation line	- · - · -
District line	- - - - -
County line	- - - - -
Original lot line	—————
Deed lot number	(15)
Parcel or index number	⊙
Improvement	○
Railroad	—+—+—+—

Revisions			
1	4-15-64	9	17
2	12-9-74 DAF	10	18
3	Revised to 7-1-88 JFB	11	19
4	July 1988 JFB	12	20
5	O.G.'s 5-15-95 J.F.B.	13	21
6	SLS INC. 1/4/99 DSW	14	22
7	ESI 12/5/02 RE K	15	23
8		16	24

KEY MAP

**MCDOWELL COUNTY**  
STATE OF WEST VIRGINIA  
Office of Assessor

DISTRICT  
**SANDY RIVER**

**SHEET NO: 363**

Date, Aerial Photography: April, 1961 Date, Map: July, 1962  
Photo No: Scale: 1" = 400'