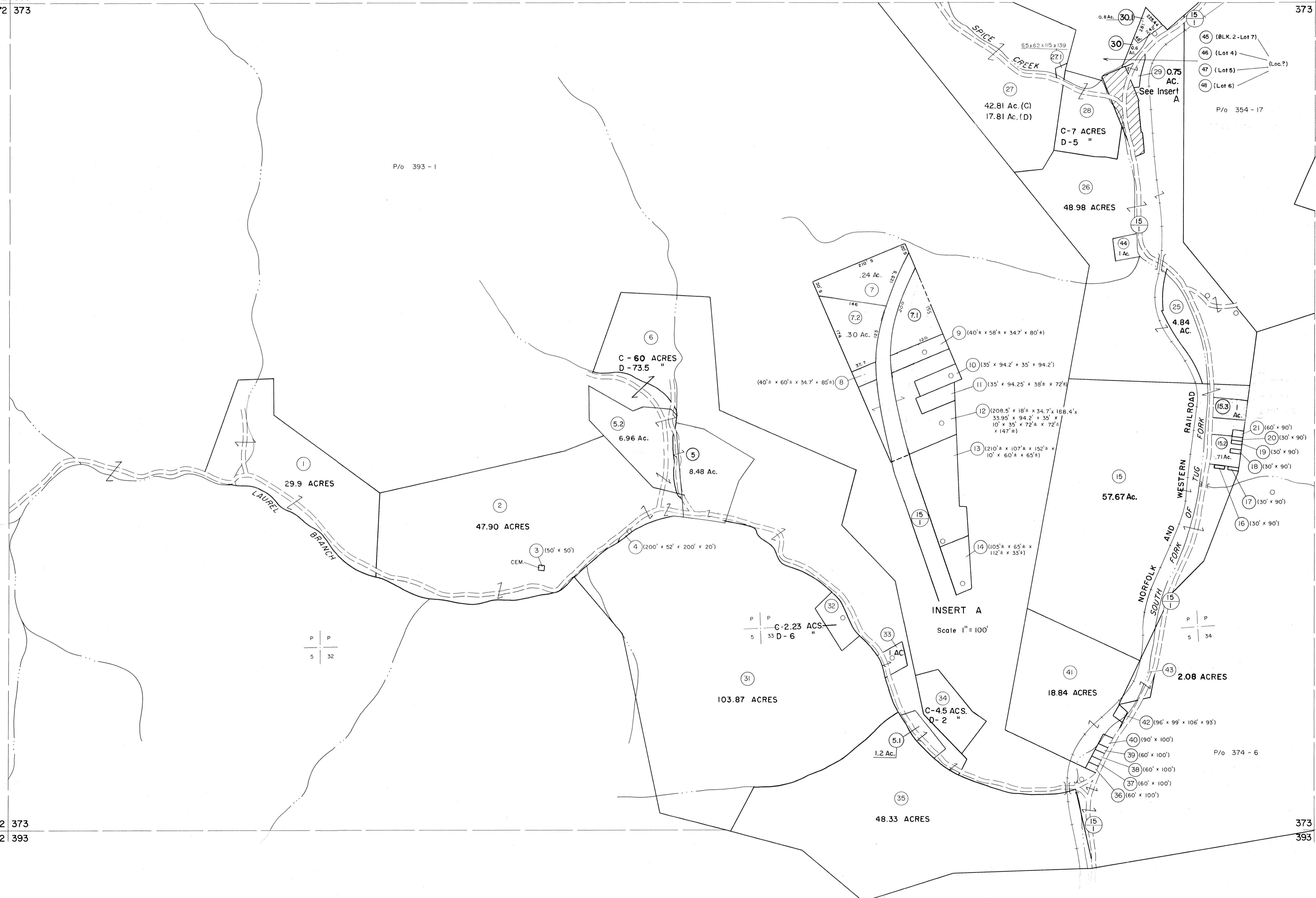


352 353
372 373

353 354
373 374

372 373
392 393

373 374
393 394

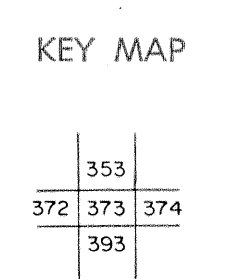


For Tax Purposes Only

Prepared by
MICHAEL BAKER, JR., INC.
Consulting Engineers
Rochester, Pennsylvania

Legend	
Property line	-----
Edge of pavement or roadway	-----
Corporation line	-----
District line	-----
County line	-----
Original lot line	-----
Deed lot number	(15)
Parcel or index number	(2)
Improvement	o
Railroad	-----

Revisions					
1	4-15-64	9	5-15-05	HAS	17
2	12-11-74	T.G.	S&H	12/31/05	18
3	To 7-1-1983 C.P.		S&H	8/25/06	19
4					20
5					21
6					22
7	SLS INC. 6/26/98	JWM			23
8	ES! 4/26/01	REK			24



MCDOWELL COUNTY
STATE OF WEST VIRGINIA
Office of Assessor

DISTRICT	ADKIN
SHEET NO:	373
Date, Aerial Photography:	April, 1961
Photo No.:	
Date, Map:	July, 1962
Scale:	1" = 400'