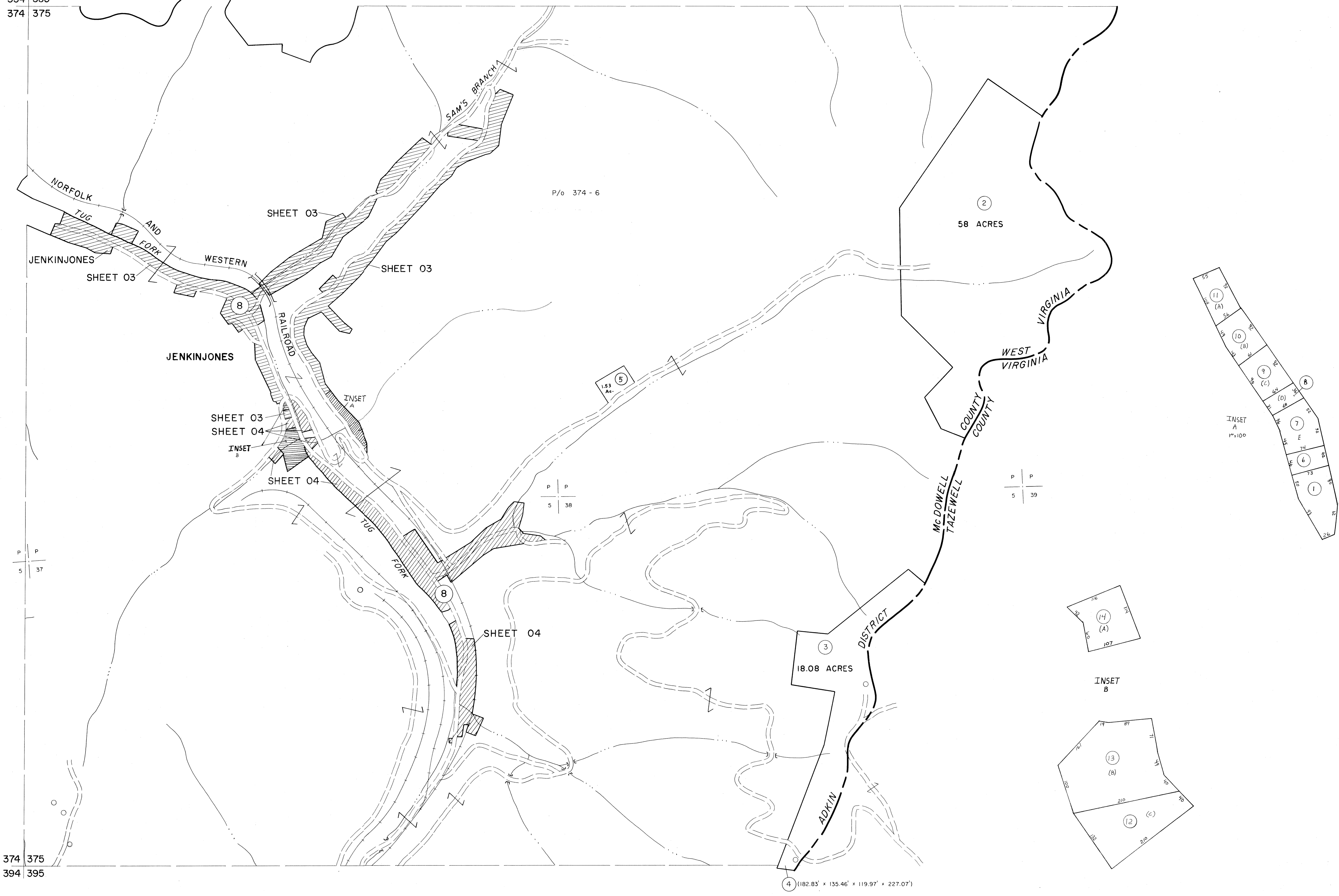


354 355  
374 375

355 356  
375 375



374 375  
394 395

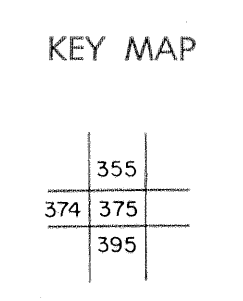
375 395

For Tax Purposes Only

Prepared by  
MICHAEL BAKER, JR., INC.  
Consulting Engineers  
Rochester, Pennsylvania

Legend	
Property line	—————
Edge of pavement or roadway	—————
Corporation line	—————
District line	—————
County line	—————
Original lot line	-----
Dead lot number	(15)
Parcel or index number	(29)
Improvement	o
Railroad	—+—+—+—

Revisions	
1	4-15-64
2	12-11-74 T.G.
3	To JULY 1983 C.P.
4	July 1985 J.W.M.
5	SLS INC. 6/26/98 J.W.M.
6	
7	
8	



**McDOWELL COUNTY**  
STATE OF WEST VIRGINIA  
Office of Assessor

DISTRICT **ADKIN**

**SHEET NO: 375**

Date, Aerial Photography: April, 1961 Date, Map: July, 1962  
Photo No: Scale: 1" = 400'