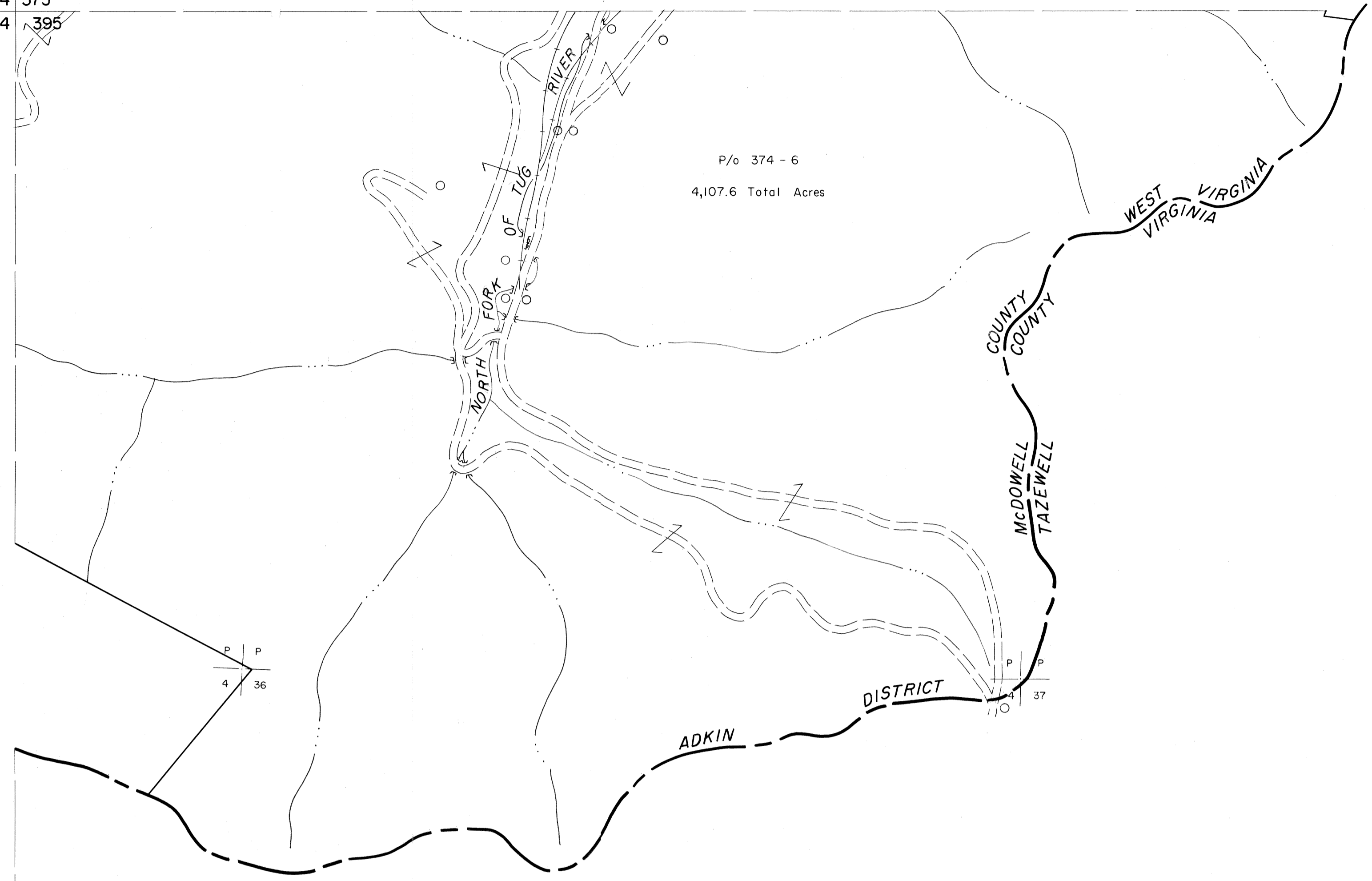


374 375
394 395

375
395



P P
4 36

P P
4 38

394 395
414

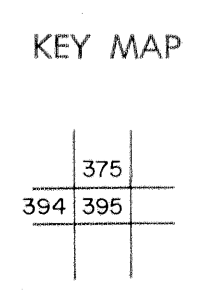
395

For Tax Purposes Only

Prepared by
MICHAEL BAKER, JR., INC.
Consulting Engineers
Rochester, Pennsylvania

Legend	
Property line	—————
Edge of pavement or roadway	—————
Corporation line	—————
District line	—————
County line	—————
Original lot line	-----
Deed lot number	(15)
Parcel or index number	(29)
Improvement	o
Railroad	—+—+—+—

Revisions			
1	4-15-64	9	17
2	To JULY 1, 1983 C.P.	10	18
3		11	19
4		12	20
5		13	21
6		14	22
7		15	23
8		16	24



McDOWELL COUNTY
STATE OF WEST VIRGINIA
Office of Assessor

DISTRICT	ADKIN
SHEET NO: 395	
Date, Aerial Photography: April, 1961	Date, Map: July, 1962
Photo No:	Scale: 1" = 400'