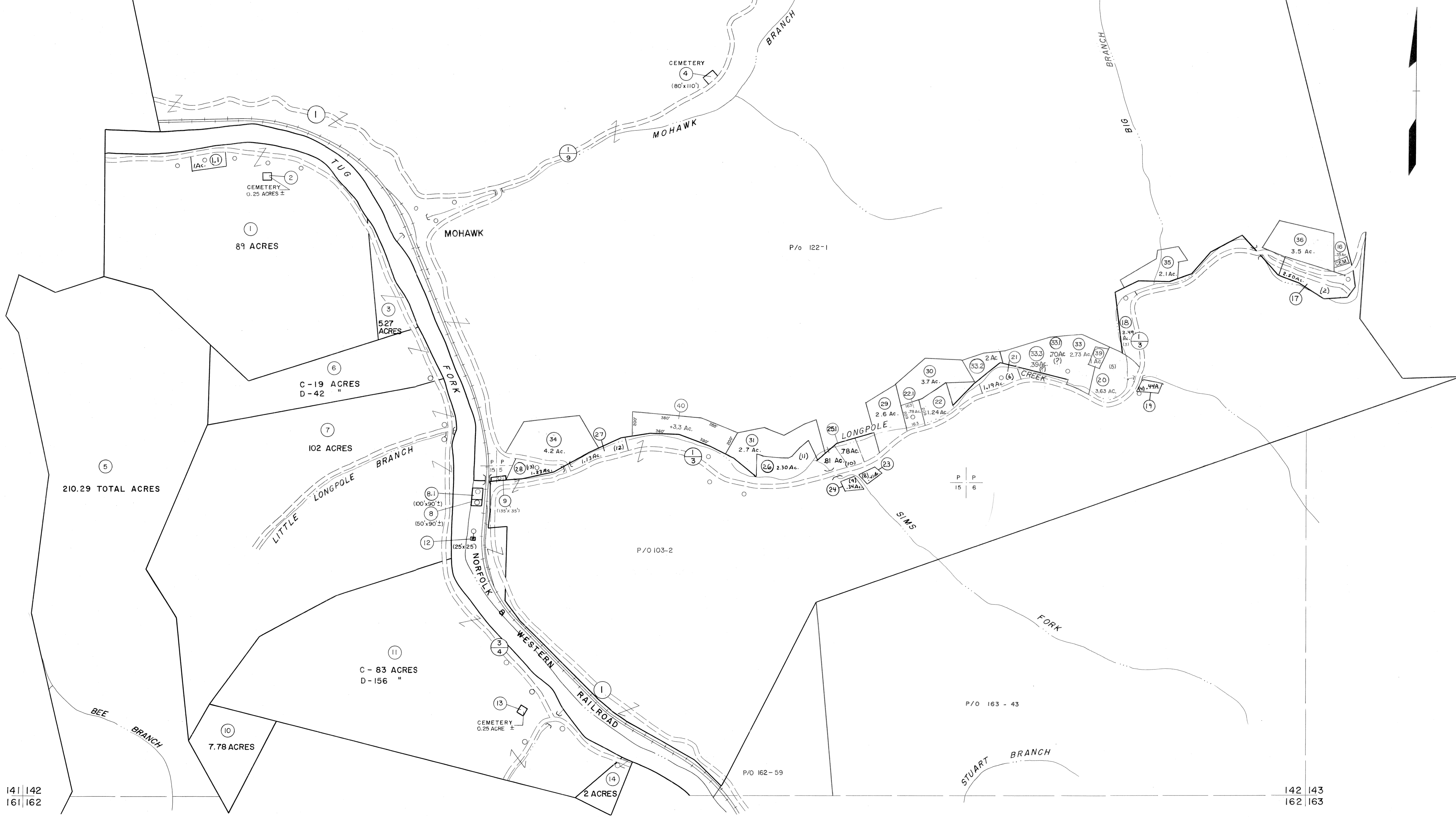


121 | 122
141 | 142

122 | 123
142 | 143



141 | 142
161 | 162

142 | 143
162 | 163

For Tax Purposes Only

Prepared by
MICHAEL BAKER, JR., INC.
Consulting Engineers
Rochester, Pennsylvania

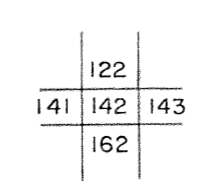
Legend

Property line	—————	Original lot line	-----
Edge of pavement or roadway	———	Deed lot number	(15)
Corporation line	-----	Parcel or index number	(99)
District line	-----	Improvement	o
County line	-----	Railroad	———

Revisions

1	4-15-64	9	SLS INC. 12/29/98	DSW	17
2	12-3-74	10	ESI	12/4/02	REK
3	Revised to 7-1-83	11	2-7-10		JK
4	6/1/88	12			
5	O.G.I.S 5-15-95	13	J.E.B		
6	O.G.I.S 12-1-96	14	J.E.B		
7	SLS INC. 6/22/99	15			
8		16			

KEY MAP



McDOWELL COUNTY
STATE OF WEST VIRGINIA
Office of Assessor

DISTRICT
SANDY RIVER

SHEET NO: 142

Date, Aerial Photography: April, 1961 Date, Map: July 1962
Photo No: Scale: 1"=400'