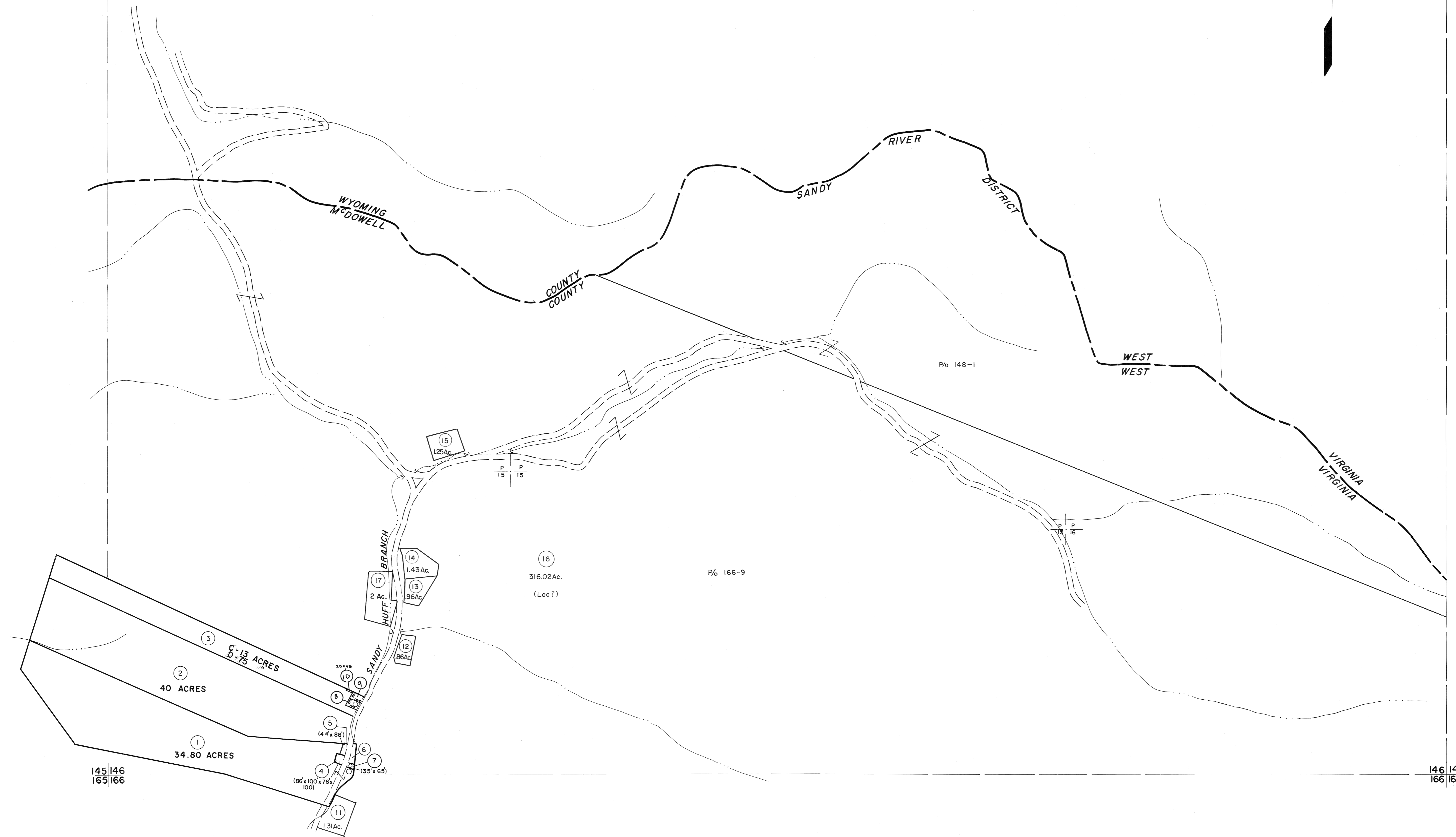


145 146

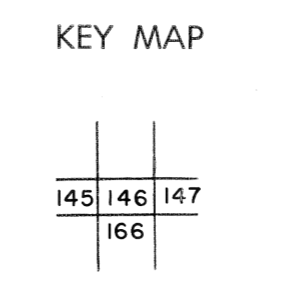
146 147



For Tax Purposes Only
 Prepared by
MICHAEL BAKER, JR., INC.
 Consulting Engineers
 Rochester, Pennsylvania

Legend	
Property line	—————
Edge of pavement or roadway	—————
Corporation line	—————
District line	—————
County line	—————
Original lot line	—————
Deed lot number	(15)
Parcel or index number	(99)
Improvement	o
Railroad	—————

Revisions	
1	4-15-64
2	12-9-74 T. G.
3	Revised to 7-1-83 S.F.
4	EST. 12/14/02 REK
5	3/27/08 SBH
6	2/27/17 SLS
7	
8	



MCDOWELL COUNTY
 STATE OF WEST VIRGINIA
 Office of Assessor

DISTRICT
SANDY RIVER
 SHEET NO: 146
 Date, Aerial Photography: April, 1961 Date, Map: July, 1962
 Photo No: Scale: 1" = 400'