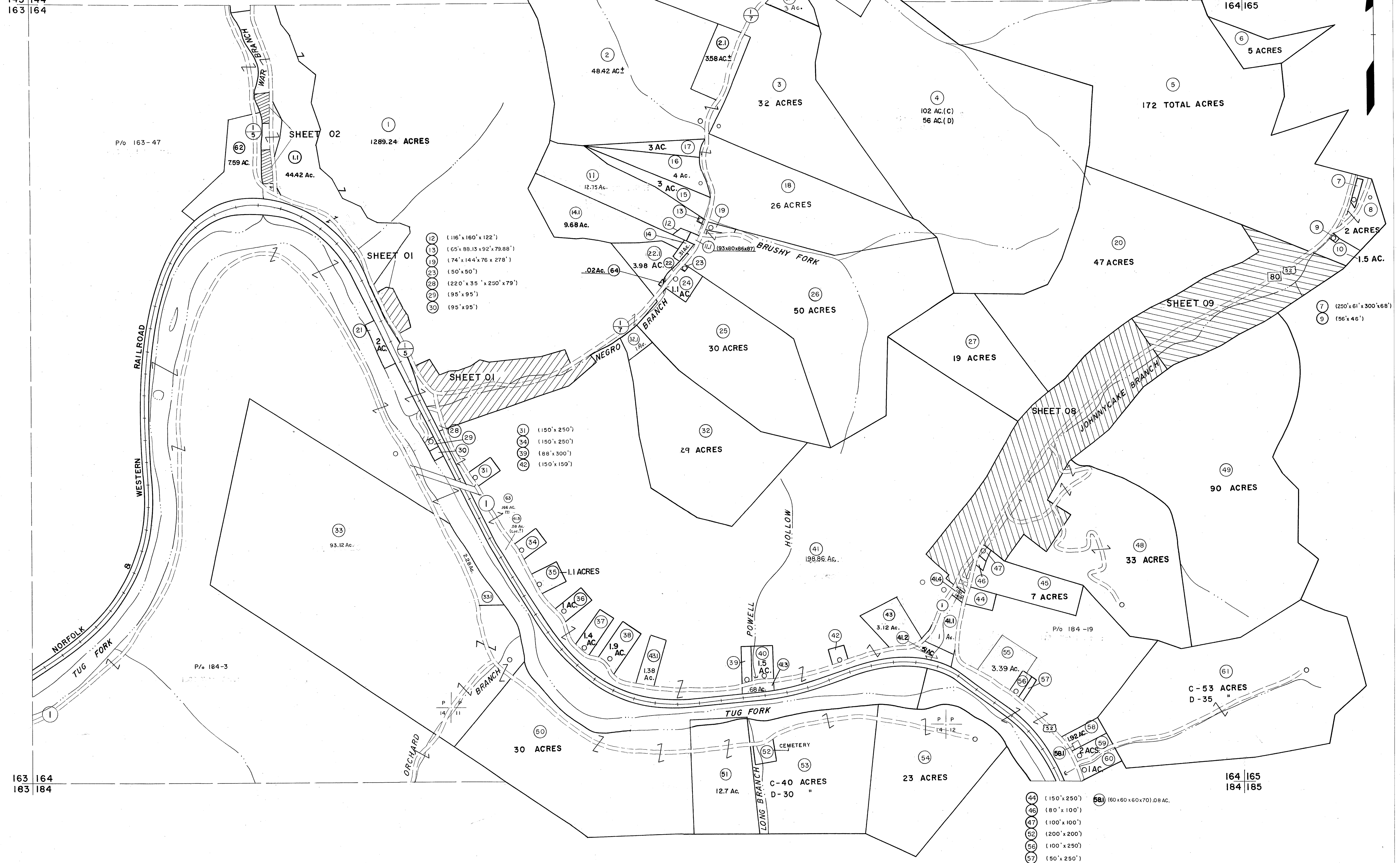


143 | 144
163 | 164

144 | 145
164 | 165



P/o 163-47

SHEET 02

1289.24 ACRES

759 AC.
44.42 Ac.

- 12 (116' x 160' x 122')
- 13 (65' x 88.13 x 92' x 79.88')
- 19 (74' x 144' x 76' x 278')
- 23 (50' x 50')
- 28 (220' x 35' x 250' x 79')
- 29 (95' x 95')
- 30 (95' x 95')

SHEET 01

SHEET 01

- 31 (150' x 250')
- 34 (150' x 250')
- 39 (88' x 300')
- 42 (150' x 150')

- 33 93.12 Ac.
- 34
- 35 1.1 ACRES
- 36 1 AC.
- 37 1.4 AC.
- 38 1.9 AC.
- 39 1.38 Ac.
- 40 1.5 AC.
- 41 198.86 Ac.
- 42
- 43 3.12 Ac.
- 44 1 Ac.
- 45 7 ACRES
- 46
- 47
- 48 33 ACRES
- 49 90 ACRES
- 50 30 ACRES
- 51 12.7 Ac.
- 52 CEMETERY
- 53 C-40 ACRES
D-30 "
- 54 23 ACRES
- 55 3.39 Ac.
- 56
- 57
- 58 192 AC.
- 59 2 ACRES
- 60 0.1 AC.
- 61 C-53 ACRES
D-35 "

- 44 (150' x 250')
- 46 (80' x 100')
- 47 (100' x 100')
- 52 (200' x 200')
- 56 (100' x 250')
- 57 (50' x 250')
- 58 (60' x 60' x 70' x 0.8 AC.)

163 | 164
183 | 184

164 | 165
184 | 185

For Tax Purposes Only

Prepared by
MICHAEL BAKER, JR., INC.
Consulting Engineers
Rochester, Pennsylvania

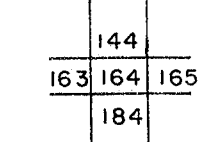
Legend

Property line	---	Original lot line	---
Edge of pavement or roadway	---	Deed lot number	(15)
Corporation line	---	Parcel or index number	(99)
District line	---	Improvement	o
County line	---	Railroad	---

Revisions

1	4-15-64	9	O.G.I.S	12-1-96	J.E.B	17	3/2/14	S.B.H
2	12-4-74	10	SLS INC.	6/22/98	DSW	18		
3	Revised to 7-1-83	11	SLS INC.	12/29/98	DSW	19		
4	7-1-84	12	ESI	4/24/01	REK	20		
5	July, 1988	13		5/24/04	S.B.H	21		
6	Revised to 7-1-88	14		5-15-05	H.L.S	22		
7	Revised to 7-1-87	15	S.B.H	12/31/05		23		
8	O.G.I.S	16		4/14/12	S.H	24		

KEY MAP



McDOWELL COUNTY
STATE OF WEST VIRGINIA
Office of Assessor

DISTRICT

SANDY RIVER

SHEET NO: 164

Date, Aerial Photography: April, 1961 Date, Map: July, 1962
Photo No: Scale: 1" = 400'