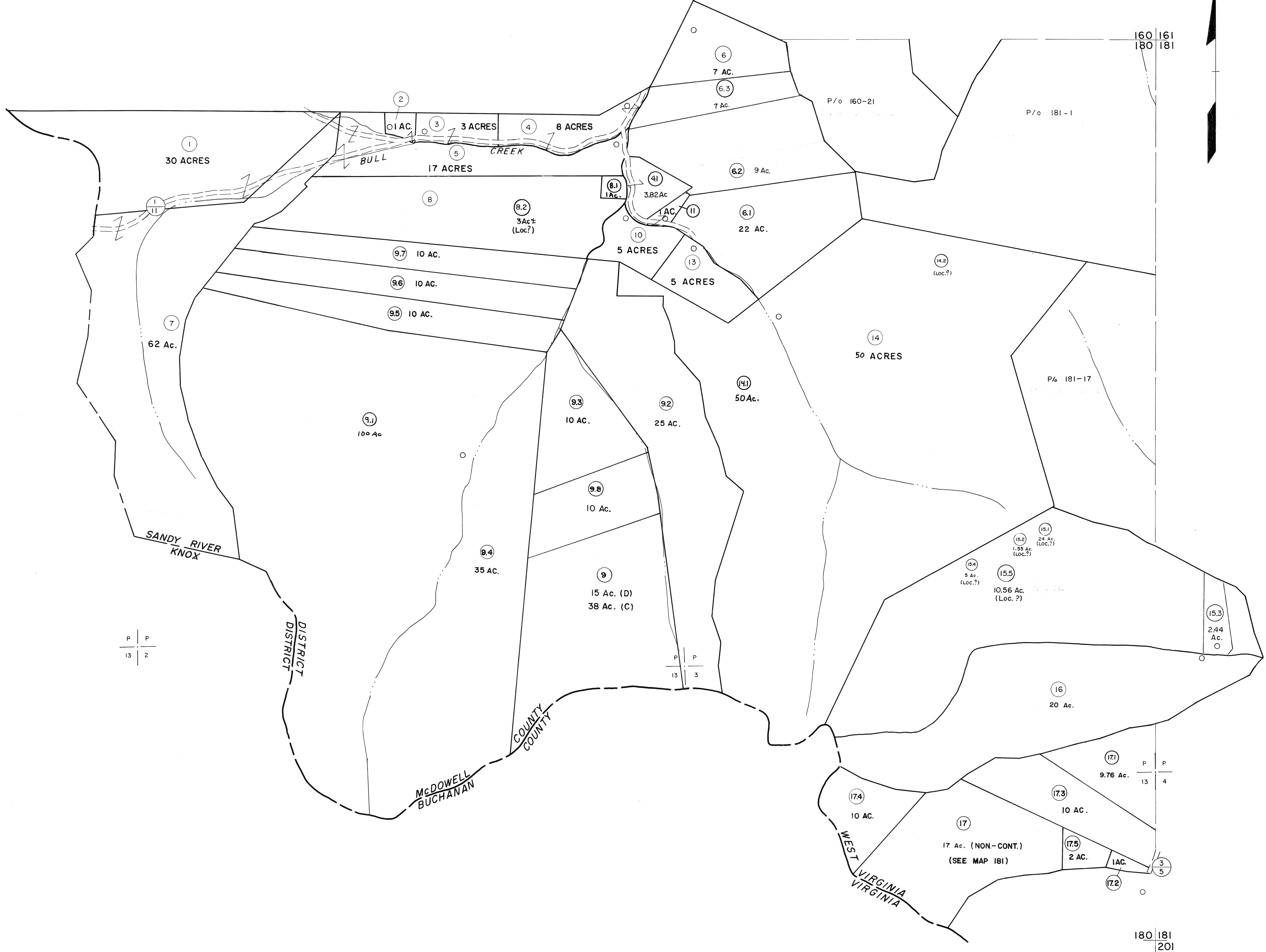


160
180

160 161
180 181



P P
13 2

P P
13 3

P P
13 4

180 181
201

For Tax Purposes Only

Prepared by
MICHAEL BAKER, JR., INC.
Consulting Engineers
Rochester, Pennsylvania

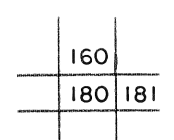
Legend

Property line	—————	Original lot line	- - - - -
Edge of pavement or roadway	—————	Deed lot number	(15)
Corporation line	—————	Parcel or index number	(99)
District line	—————	Improvement	o
County line	—————	Railroad	—+—+—+—

Revisions

1	4-15-64	9	ESI	4/24/01	REX	17
2	12-4-74	10	T.G.	3/27/08	S&H	18
3	Revised to 7-1-89	11	H&S	2-7-10	H&S	19
4	John King	12	S&H	3/2/14	S&H	20
5	Revised to 7-1-89	13	SLS	2/28/17	SLS	21
6	O.G.I.S 5-15-95	14	J.E.B.			22
7	O.G.I.S 12-1-96	15	J.E.B.			23
8	SLS INC. 6/23/98	16	J.W.M.			24

KEY MAP



MCDOWELL COUNTY
STATE OF WEST VIRGINIA
Office of Assessor

DISTRICT
SANDY RIVER

SHEET NO: **180**

Date, Aerial Photography: April, 1961 Date, Map: July, 1962
Photo No: Scale: 1" = 400'