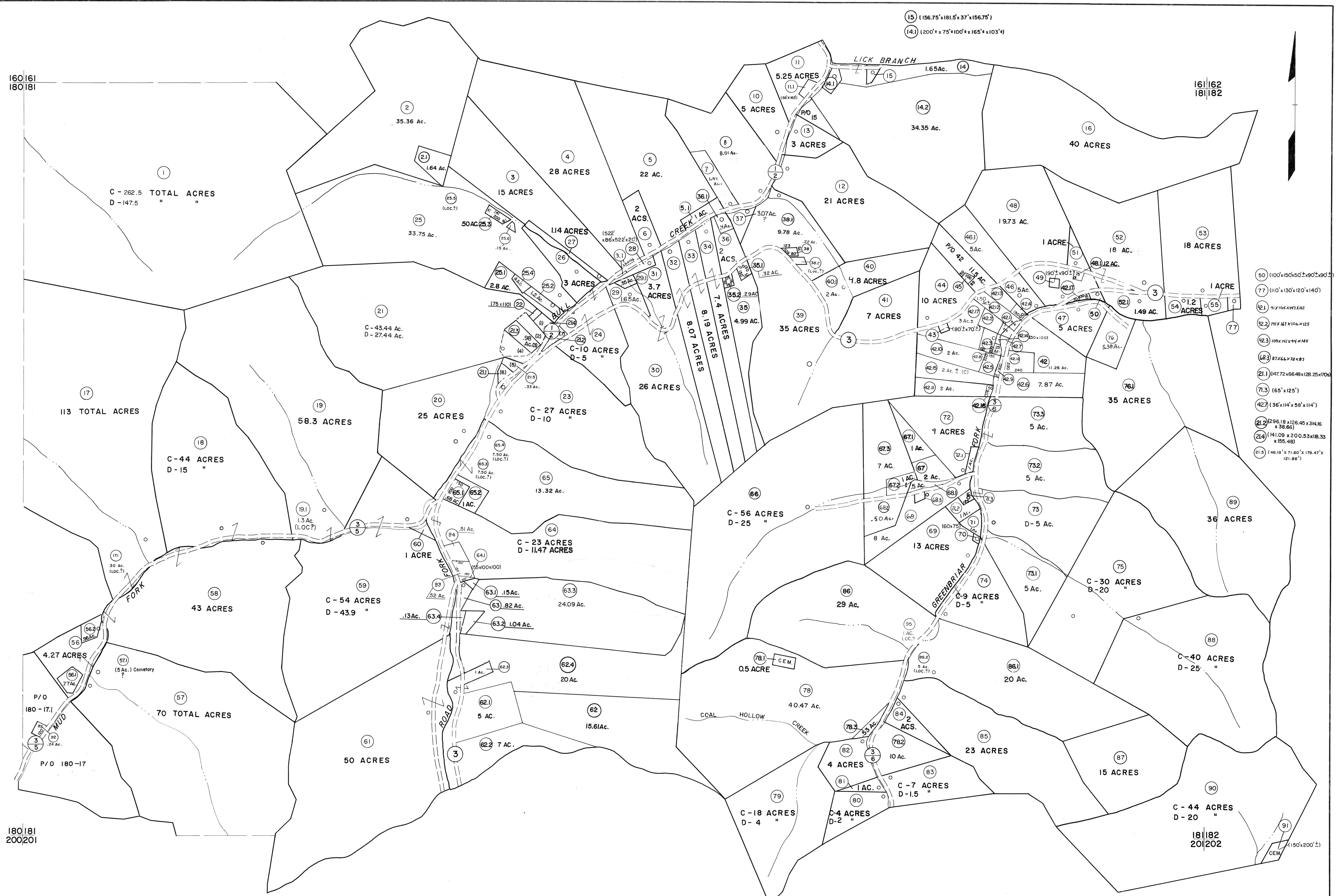


160|161
180|181

180|181
200|201



- (50) 110'x150'x50'±x90'±x90'
- (77) 111'0" x 130' x 120' x 140'
- (92.1) 91' x 105' x 117' x 112'
- (92.2) 111' x 167' x 106' x 125'
- (92.3) 109' x 111' x 111' x 115'
- (68.3) 87' x 66' x 72' x 87'
- (21.1) 147' x 122' x 66' x 128' x 25' x 170'
- (71.3) (65' x 125')
- (42.7) (136' x 114' x 58' x 114')
- (21.2) 296.18 x 126.45 x 314.16 x 38.66'
- (21.4) 141.09 x 200.53 x 18.33 x 185.48'
- (21.5) (46.19' x 71.60' x 179.47' x 121.86')

For Tax Purposes Only

Prepared by
MICHAEL BAKER, JR., INC.
Consulting Engineers
Rochester, Pennsylvania

Legend	
Property line	—————
Edge of pavement or roadway	—————
Corporation line	—————
District line	—————
County line	—————
Original lot line	-----
Dead lot number	(15)
Parcel or index number	(99)
Improvement	○
Railroad	—+—+—+—

Revisions			
1	4-15-64	9	O.G.I.S 12-1-96 J.E.B
2	12-5-74	10	SLS INC. 6/24/98 JWM
3	Revised to 7-1-83	11	SLS INC. 12/29/98 DSJ
4	7-1-84	12	ESI 4/24/01 REK
5	Revised to 7-1-88	13	ESI 12/4/02 REK
6	Revised to 7-1-88	14	5/24/04 SBH
7	Revised to 7-1-89	15	5-15-05 H+S
8	O.G.I.S 5-15-95	16	S.B.H 12/31/05

KEY MAP

McDOWELL COUNTY
STATE OF WEST VIRGINIA
Office of Assessor

DISTRICT
SANDY RIVER

SHEET NO: 181

Date, Aerial Photography: April, 1961 Date, Map: July, 1962
Photo No: Scale: 1" = 400'