

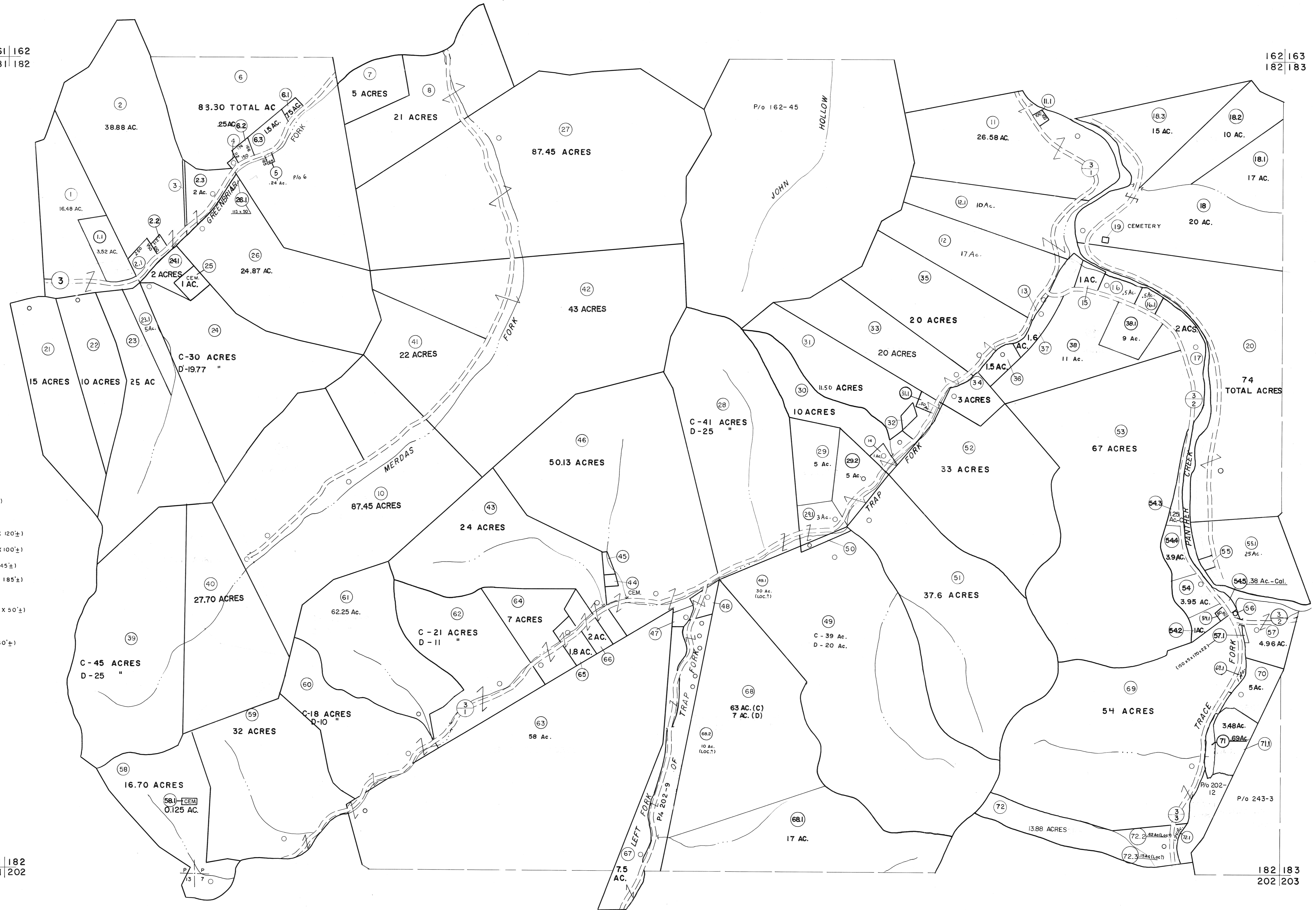
161 | 162
181 | 182

162 | 163
182 | 183

- 3 (10' x 62')
- 4 (70' x 90' x 100' x 90')
- 5 (65' x 165')
- 9 (148' x 60' x 145' x 60')
- 13 (264' x 62' x 264' x 20')
- 19 (50' x 50')
- 32 (170' x 130' x 150' x 120')
- 44 (100' x 120' x 100' x 100')
- 45 (200' x 100' x 200' x 45')
- 47 (215' x 100' x 120' x 185')
- 49 1 ACRE
- 50 (420' x 50' x 50' x 460' x 50')
- 55 (100' x 80')
- 56 (80' x 35' x 100' x 60')

181 | 182
201 | 202

182 | 183
202 | 203



For Tax Purposes Only

Prepared by
MICHAEL BAKER, JR., INC.
Consulting Engineers
 Rochester, Pennsylvania

Legend	
Property line	—————
Edge of pavement or roadway	—————
Corporation line	—————
District line	—————
County line	—————
Original lot line	-----
Deed lot number	(15)
Parcel or index number	(99)
Improvement	o
Railroad	—+—+—+—

Revisions			
1	4-15-64	9	SLS INC. 12/28/98 DSW 17
2	12-5-74	10	5/24/04 S&H 18
3	Revised to 7-1-83	11	4-18-07 H&S 19
4	Revised to 7-1-83	12	2-7-10 H&S 20
5	Revised to 7-1-83	13	2/28/17 SLS 21
6	O.G.I.S 5-15-95	14	J.E.B 22
7	SLS INC. 6/24/98	15	J.W.M 23
8		16	

KEY MAP

McDOWELL COUNTY
 STATE OF WEST VIRGINIA
 Office of Assessor

DISTRICT	SANDY RIVER
SHEET NO:	182
Date, Aerial Photography: April, 1961	Date, Map: July, 1962
Photo No:	Scale: 1" = 400'