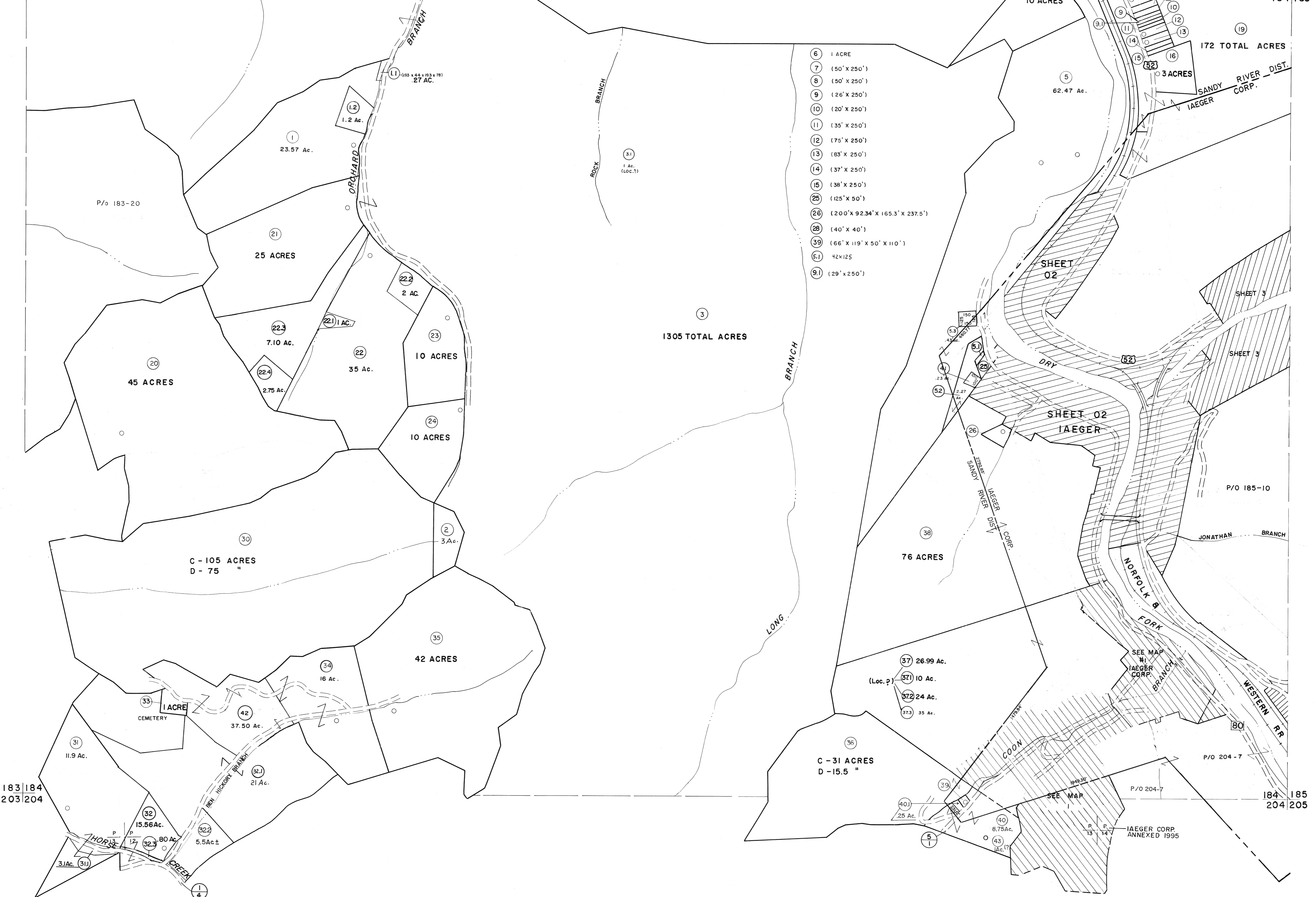


163 | 164
183 | 184

164 | 165
184 | 185



- 6 1 ACRE
- 7 (50' X 250')
- 8 (50' X 250')
- 9 (26' X 250')
- 10 (20' X 250')
- 11 (35' X 250')
- 12 (75' X 250')
- 13 (83' X 250')
- 14 (37' X 250')
- 15 (38' X 250')
- 25 (125' X 50')
- 26 (200' X 92.34' X 165.3' X 237.5')
- 28 (40' X 40')
- 39 (66' X 119' X 50' X 110')
- 51 42 X 125
- 91 (29' X 250')

For Tax Purposes Only
 Prepared by
MICHAEL BAKER, JR., INC.
 Consulting Engineers
 Rochester, Pennsylvania

Legend

Property line	—————	Original lot line	- - - - -
Edge of pavement or roadway	—————	Deed lot number	(15)
Corporation line	—————	Parcel or index number	(99)
District line	—————	Improvement	o
County line	—————	Railroad	—————

Revisions

1	4-15-64	9	O.G.I.S 12-1-96	J.E.B	17
2	12-5-74	10	SLS INC. 12/29/98	DSW	18
3	Revised to 7-1-88	11	ESI 12/4/02	REK	19
4	7-1-84	12	5/24/04	SBH	20
5	Revised to 7-1-88	13	5-15-05	445	21
6	Revised to 7-1-88	14	4-18-07	445	22
7	Revised to 7-1-88	15	2/28/17	SLS	23
8	O.G.I.S 5-15-95	16		J.E.B	24

KEY MAP

McDOWELL COUNTY
 STATE OF WEST VIRGINIA
 Office of Assessor

DISTRICT
SANDY RIVER
 SHEET NO: 184
 Date, Aerial Photography: April, 1961
 Photo No: _____
 Date, Map: July, 1962
 Scale: 1" = 400'