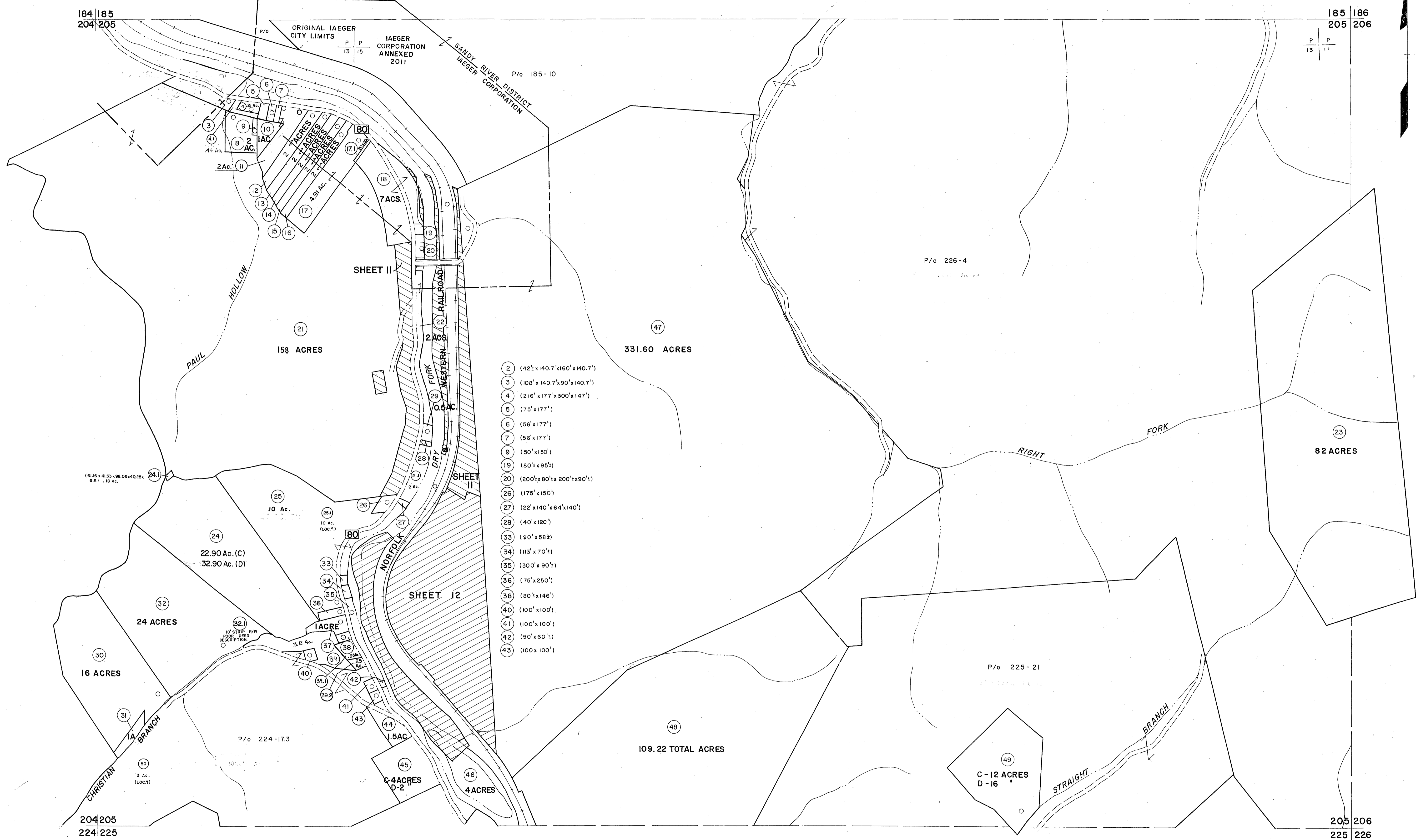


184 | 185
204 | 205

185 | 186
205 | 206



- 2 (42' x 140.7' x 160' x 140.7')
- 3 (108' x 140.7' x 90' x 140.7')
- 4 (216' x 177' x 300' x 147')
- 5 (75' x 177')
- 6 (56' x 177')
- 7 (56' x 177')
- 9 (90' x 150')
- 19 (80' x 95')
- 20 (200' x 80' x 200' x 90')
- 26 (175' x 150')
- 27 (22' x 140' x 64' x 140')
- 28 (40' x 120')
- 33 (90' x 58')
- 34 (113' x 70')
- 35 (300' x 90')
- 36 (75' x 250')
- 38 (80' x 146')
- 40 (100' x 100')
- 41 (100' x 100')
- 42 (50' x 60')
- 43 (100' x 100')

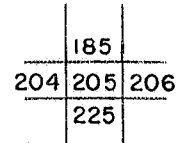
For Tax Purposes Only

Prepared by
MICHAEL BAKER, JR., INC.
Consulting Engineers
Rochester, Pennsylvania

Legend	
Property line	Original lot line
Edge of pavement or roadway	Deed lot number (15)
Corporation line	Parcel or index number (17)
District line	Improvement
County line	Railroad

Revisions			
1	4-15-64	9	5/23/04 S&H 17
2	12-5-74 T.G.	10	4/18/12 S&H 18
3	Revised to 7-1-83	11	
4	7-1-84 L.E.S.	12	
5	July 1985 J.E.B.	13	
6	Revised to 7-1-88	14	
7	O.G.I.S. 5-15-95 J.E.B.	15	
8	S.I.S. INC. 12/29/98 DSW	16	

KEY MAP



McDOWELL COUNTY
STATE OF WEST VIRGINIA
Office of Assessor

DISTRICT **SANDY RIVER IAEGER**
SHEET NO: 205
Date, Aerial Photography: April, 1961 Date, Map: July, 1962
Photo No: Scale: 1" = 400'