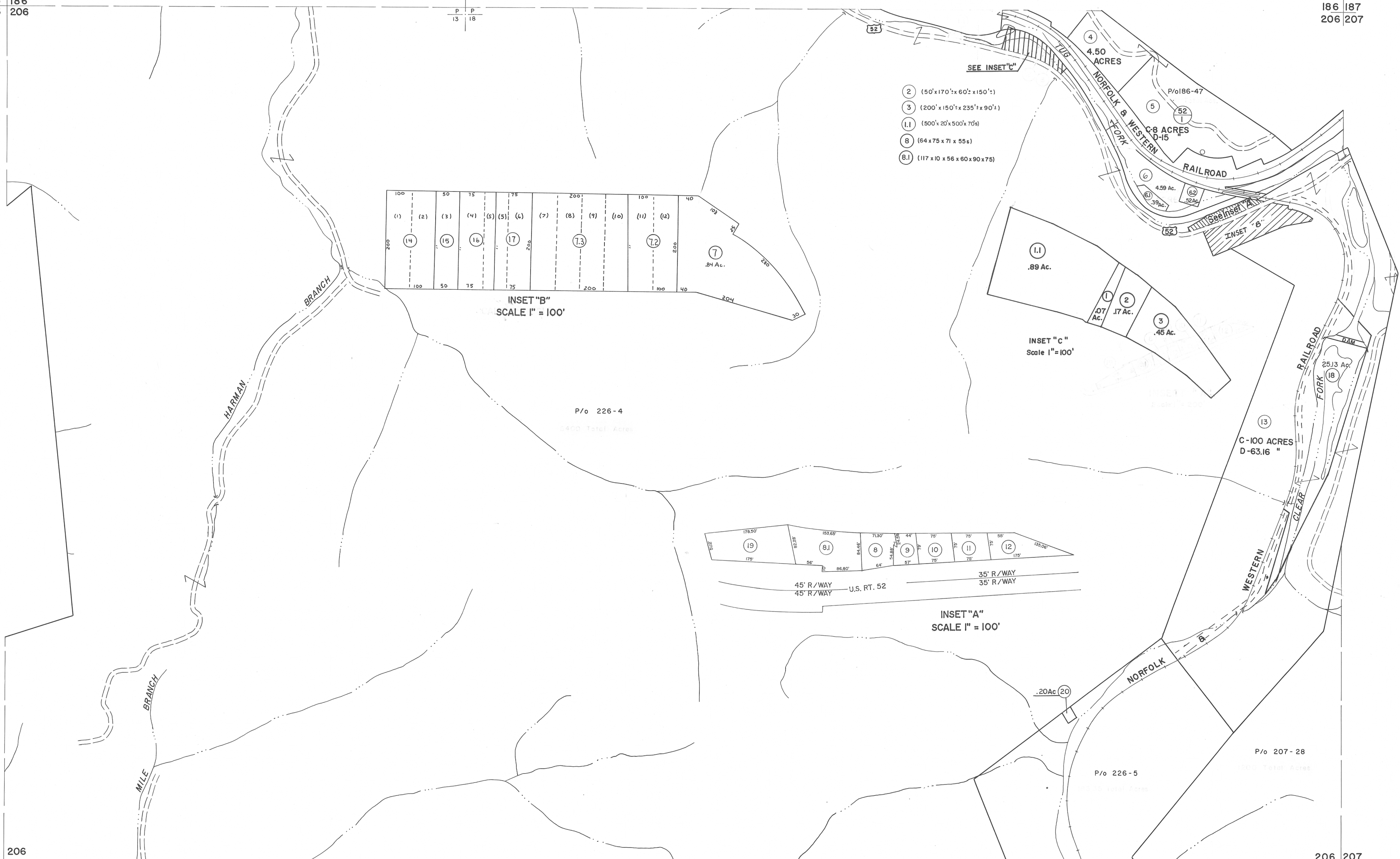


185 186  
205 206

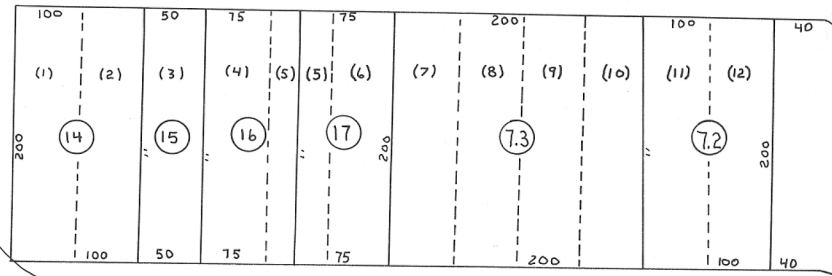
186 187  
206 207

205 206  
225 226

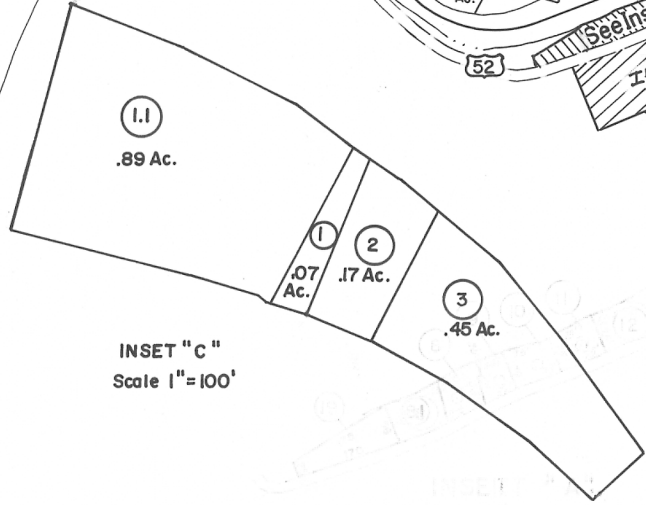
206 207  
226 227



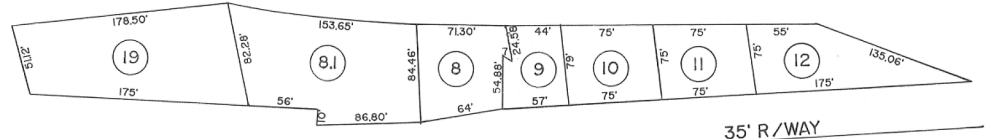
- 2 (50' x 170' x 60' x 150')
- 3 (200' x 150' x 235' x 90')
- 1.1 (500' x 20' x 500' x 70')
- 8 (64 x 75 x 71 x 55s)
- 8.1 (117 x 10 x 56 x 60 x 90 x 75)



INSET "B"  
SCALE 1" = 100'



INSET "C"  
Scale 1" = 100'



INSET "A"  
SCALE 1" = 100'

For Tax Purposes Only  
Prepared by  
MICHAEL BAKER, JR., INC.  
Consulting Engineers  
Rochester, Pennsylvania

Legend	
Property line	Original lot line
Edge of pavement or roadway	Deed lot number
Corporation line	Parcel or index number
District line	Improvement
County line	Railroad

Revisions			
1	4-15-64	9	ESI 4/24/01 REK 17
2	12-6-74 T.G.	10	ESI 12/4/02 REK 18
3	Revised 7-1-83 D.F.	11	6-18-07 4-4-5 19
4	7-1-84 L.E.S.	12	4/16/12 S&H 20
5	July 1915 L.R.R.	13	
6	Revised 10-7-88 S.F.	14	
7	SLS INC. 6/25/98 DSW	15	
8	SLS INC. 12/29/98 DSW	16	

KEY MAP  
186  
205 206 207  
226

**McDOWELL COUNTY**  
STATE OF WEST VIRGINIA  
Office of Assessor

DISTRICT  
**SANDY RIVER**  
SHEET NO: 206  
Date, Aerial Photography: April, 1961 Date, Map: July, 1962  
Photo No: Scale: 1" = 400'