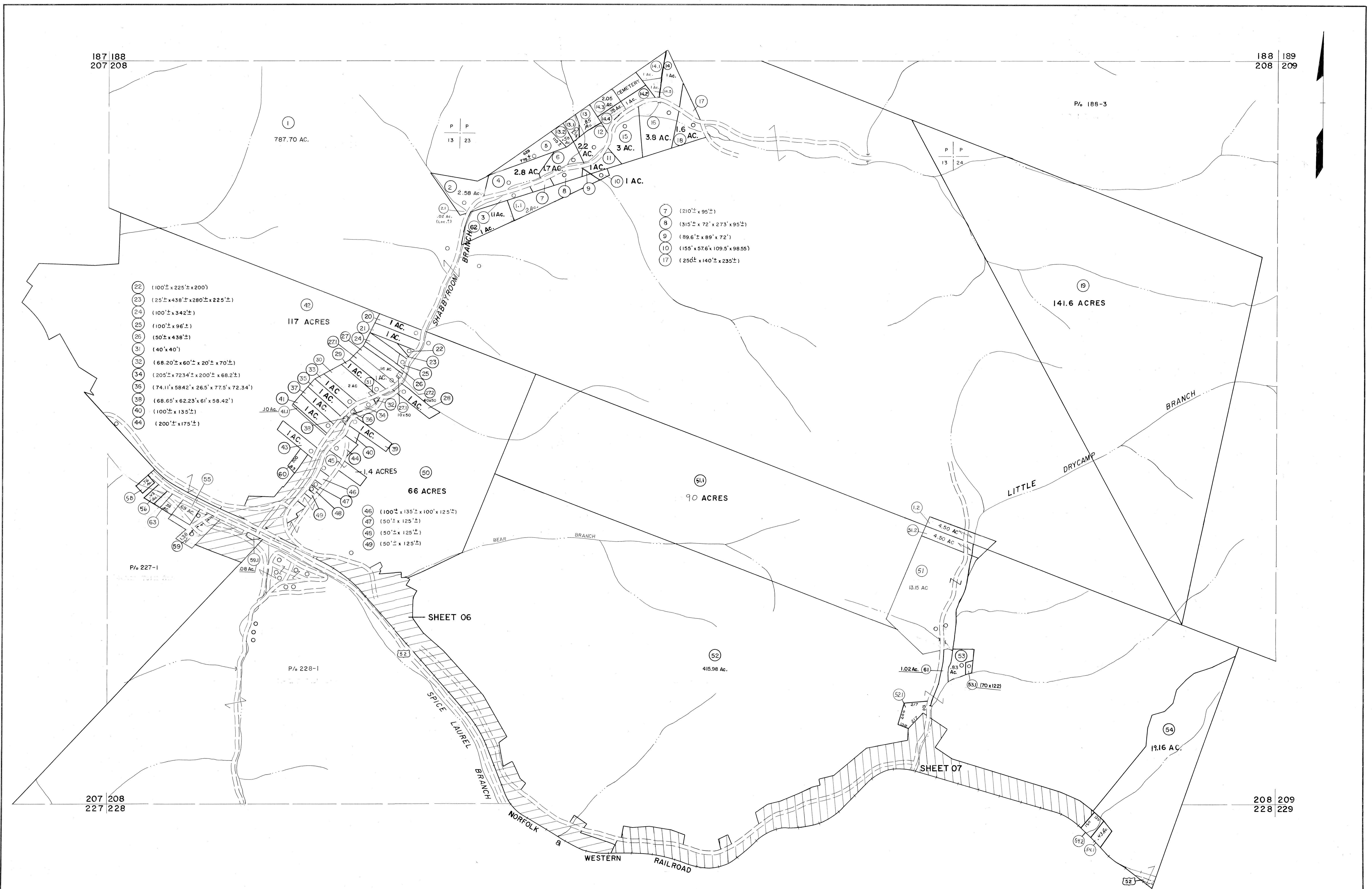


187 188  
207 208

188 189  
208 209



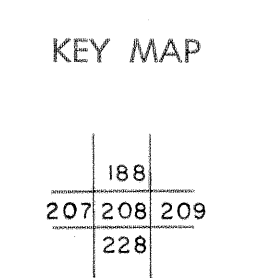
- 22 (100'± x 225'± x 200')
- 23 (25'± x 438'± x 280'± x 225'±)
- 24 (100'± x 342'±)
- 25 (100'± x 96'±)
- 26 (50'± x 438'±)
- 31 (40' x 40')
- 32 (68.20'± x 60'± x 20'± x 70'±)
- 34 (205'± x 723.4'± x 200'± x 68.2'±)
- 36 (74.11' x 584.2' x 26.5' x 77.5' x 72.34')
- 38 (68.65' x 62.23' x 61' x 58.42')
- 40 (100'± x 135'±)
- 44 (200'± x 175'±)

- 7 (210'± x 95'±)
- 8 (315'± x 72' x 273' x 95'±)
- 9 (89.6'± x 89' x 72')
- 10 (155' x 57.6' x 109.5' x 98.55')
- 17 (250'± x 140'± x 235'±)

For Tax Purposes Only  
 Prepared by  
**MICHAEL BAKER, JR., INC.**  
 Consulting Engineers  
 Rochester, Pennsylvania

Legend	
Property line	—
Edge of pavement or roadway	—
Corporation line	—
District line	—
County line	—
Original lot line	—
Deed lot number	(15)
Parcel or index number	(99)
Improvement	o
Railroad	—

Revisions			
1	4-15-64	9	SLS INC. 6/26/98 JWM
2	Rhodes 12-6-74 T.G.	10	ESI 4/24/01 REK
3	Revised to 7-1-83 J.B.	11	
4	7/1/84 J.B.	12	
5	Revised to 7-1-85 J.B.	13	
6	Revised to 7-1-85 J.B.	14	
7	Revised to 7-1-87 J.B.	15	
8	O.G.I.S 12-1-95 J.E.B	16	



**MCDOWELL COUNTY**  
 STATE OF WEST VIRGINIA  
 Office of Assessor

DISTRICT	
<b>BROWNS CREEK</b>	
<b>SHEET NO: 208</b>	
Date, Aerial Photography: April, 1961	Date, Map: July, 1962
Photo No:	Scale: 1" = 400'