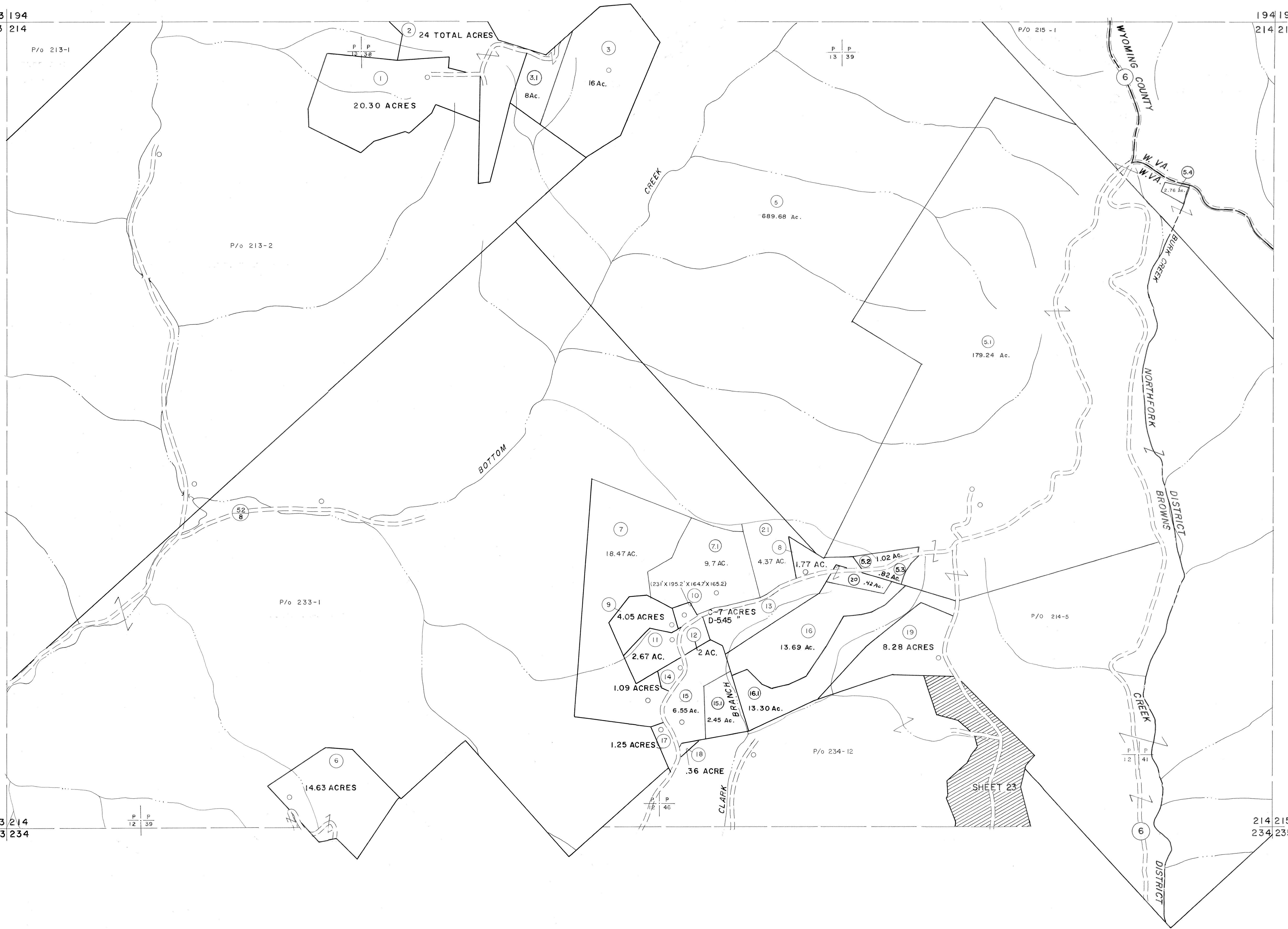


193 194
213 214

194 195
214 215

213 214
233 234

214 215
234 235



For Tax Purposes Only
 Prepared by
MICHAEL BAKER, JR., INC.
 Consulting Engineers
 Rochester, Pennsylvania

| Legend | |
|-----------------------------|------|
| Property line | — |
| Edge of pavement or roadway | — |
| Corporation line | — |
| District line | — |
| County line | — |
| Original lot line | — |
| Deed lot number | (15) |
| Parcel or index number | (22) |
| Improvement | ○ |
| Railroad | — |

| Revisions | | | |
|-----------|-----------------------|----|-------------|
| 1 | 4-15-64 | 9 | 5-15-05 H&S |
| 2 | 12-6-74 T.C. | 10 | 6-18-07 H&S |
| 3 | Revised to 7-1-83 | 11 | |
| 4 | 7/1/84 RLS | 12 | |
| 5 | 7/1/85 RLS | 13 | |
| 6 | Revised to 7-1-88 | 14 | |
| 7 | O.G.I.S 5-15-95 J.E.B | 15 | |
| 8 | O.G.I.S 12-1-96 J.E.B | 16 | |



McDOWELL COUNTY
 STATE OF WEST VIRGINIA
 Office of Assessor

DISTRICT
BROWNS CREEK
 SHEET NO: 214
 Date, Aerial Photography: April, 1961 Date, Map: July, 1962
 Photo No: Scale: 1" = 400'