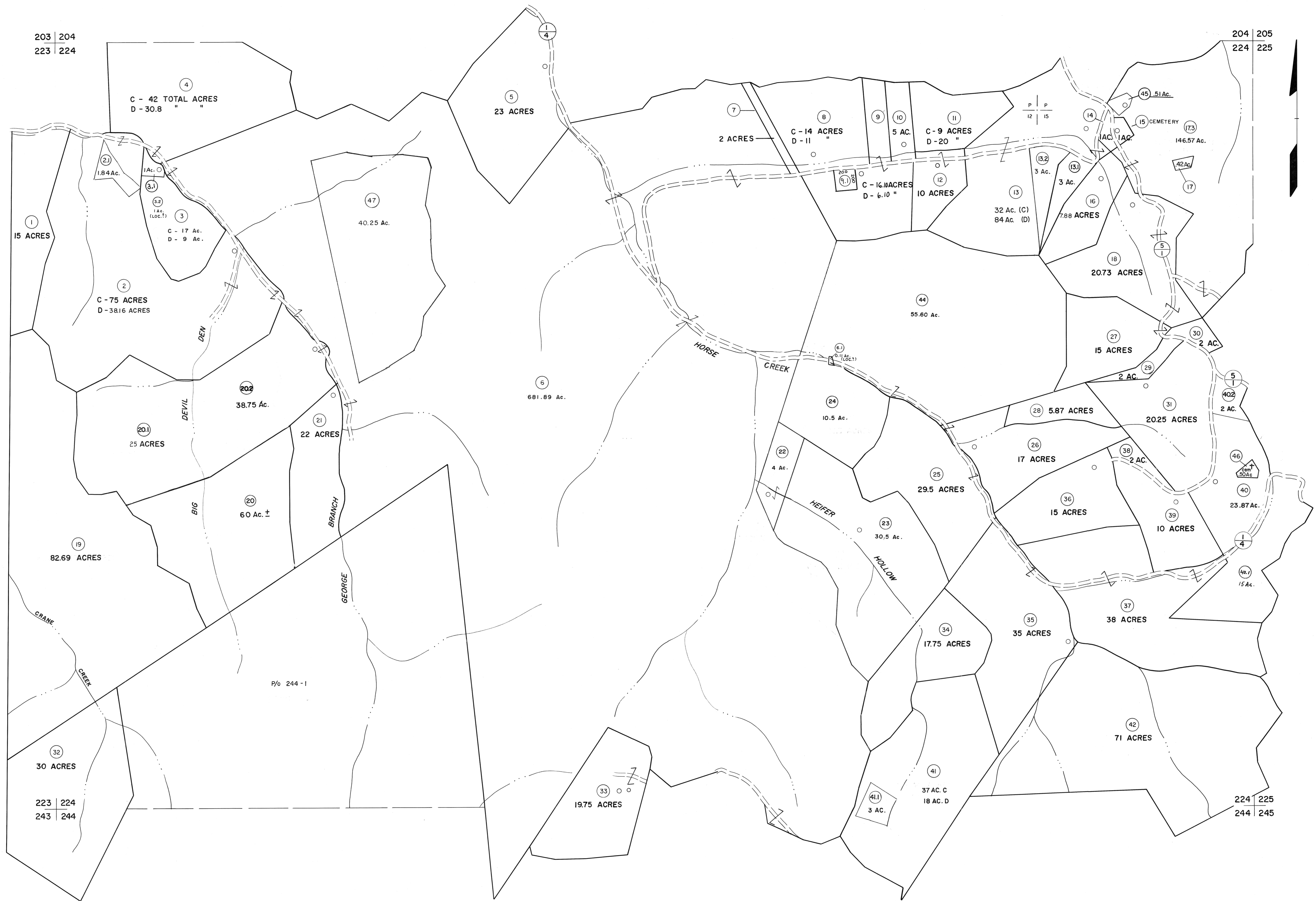


203 | 204
223 | 224

204 | 205
224 | 225



For Tax Purposes Only
Prepared by
MICHAEL BAKER, JR., INC.
Consulting Engineers
Rochester, Pennsylvania

Legend	
Property line	—————
Edge of pavement or roadway	—————
Corporation line	—————
District line	—————
County line	—————
Original lot line	—————
Deed lot number	(15)
Parcel or index number	(19)
Improvement	o
Railroad	—————

Revisions	
1 4-15-64	9 SLS INC. 12/30/98 DSW 17
2 12-6-74	10 ESI 4/24/01 REK 18
3 Revised to 7-1-83	11 5/23/04 SBH 19
4 7-1-84	12 L.E.S. 5-15-05 4/45 20
5 July 1988	13 8/27/06 SBH 21
6 Revised to 7-1-88	14 4/16/12 SBH 22
7 Revised to 7-1-89	15 3/2/14 SBH 23
8 O.G.I.S 5-15-95	16 2/28/17 SLS 24

KEY MAP
204
223 | 224 | 225
244

McDOWELL COUNTY
STATE OF WEST VIRGINIA
Office of Assessor

DISTRICT
SANDY RIVER
SHEET NO: 224
Date, Aerial Photography: April, 1961 Date, Map: July, 1962
Photo No: Scale: 1" = 400'