

209 210
229 230

210 211
230 231

P P
12 29

P/O 209-2

SHEET 30

209x117.79x82x210x272	(52)
80x222x190x100x222	(51)
35x140x288x160x265	(50)
P P 32x18x125x	(49)
12 30 80x110x248	(48)
190x248x140x61x250	(47)
90x110x290x106.5x90x213	(46)
210x215x203x210	(45)
209x210x210x81.8x108.7	(44)

P/O 210-9

P/O 210-10

310 TOTAL ACRES

274.77 TOTAL ACRES

328.65 ACRES

3.03 Ac.

31.40 Ac.

22.50 TOTAL ACRES

18 ACRES

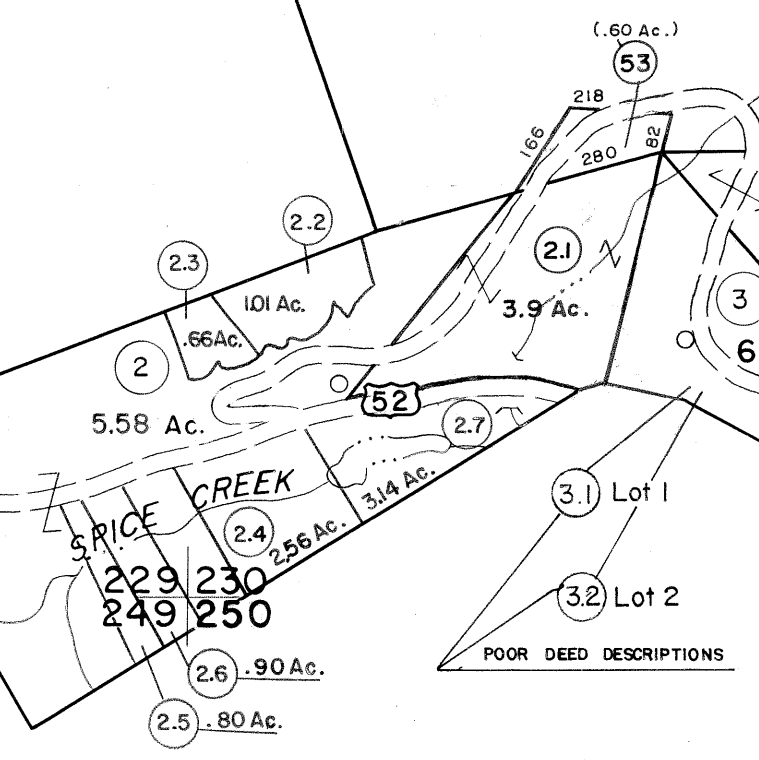
230 231
250 251

SEE SHEET 19
WELCH CORP.

BROWNS CREEK DISTRICT
WELCH CORPORATION

10.5 ACRES

6 AC.



For Tax Purposes Only

Prepared by
MICHAEL BAKER, JR., INC.
Consulting Engineers
Rochester, Pennsylvania

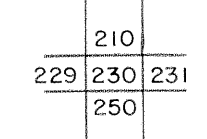
Legend

Property line	---	Original lot line	---
Edge of pavement or roadway	---	Deed lot number	(15)
Corporation line	---	Parcel or index number	(99)
District line	---	Improvement	o
County line	---	Railroad	+

Revisions

1	4-15-64	9		17
2	12-9-74	10	T.G.	18
3	Revised 7-1-85	11		19
4	July 1985	12		20
5	Revised 7-1-88	13		21
6	O.G.I.S. 5-15-95	14	J.E.B.	22
7	ESI 4/26/01	15	REK	23
8		16		24

KEY MAP



McDOWELL COUNTY
STATE OF WEST VIRGINIA
Office of Assessor

DISTRICT BROWNS CREEK
WELCH

SHEET NO: 230

Date, Aerial Photography: April, 1961
Photo No: Date, Map: July, 1962
Scale: 1" = 400'