

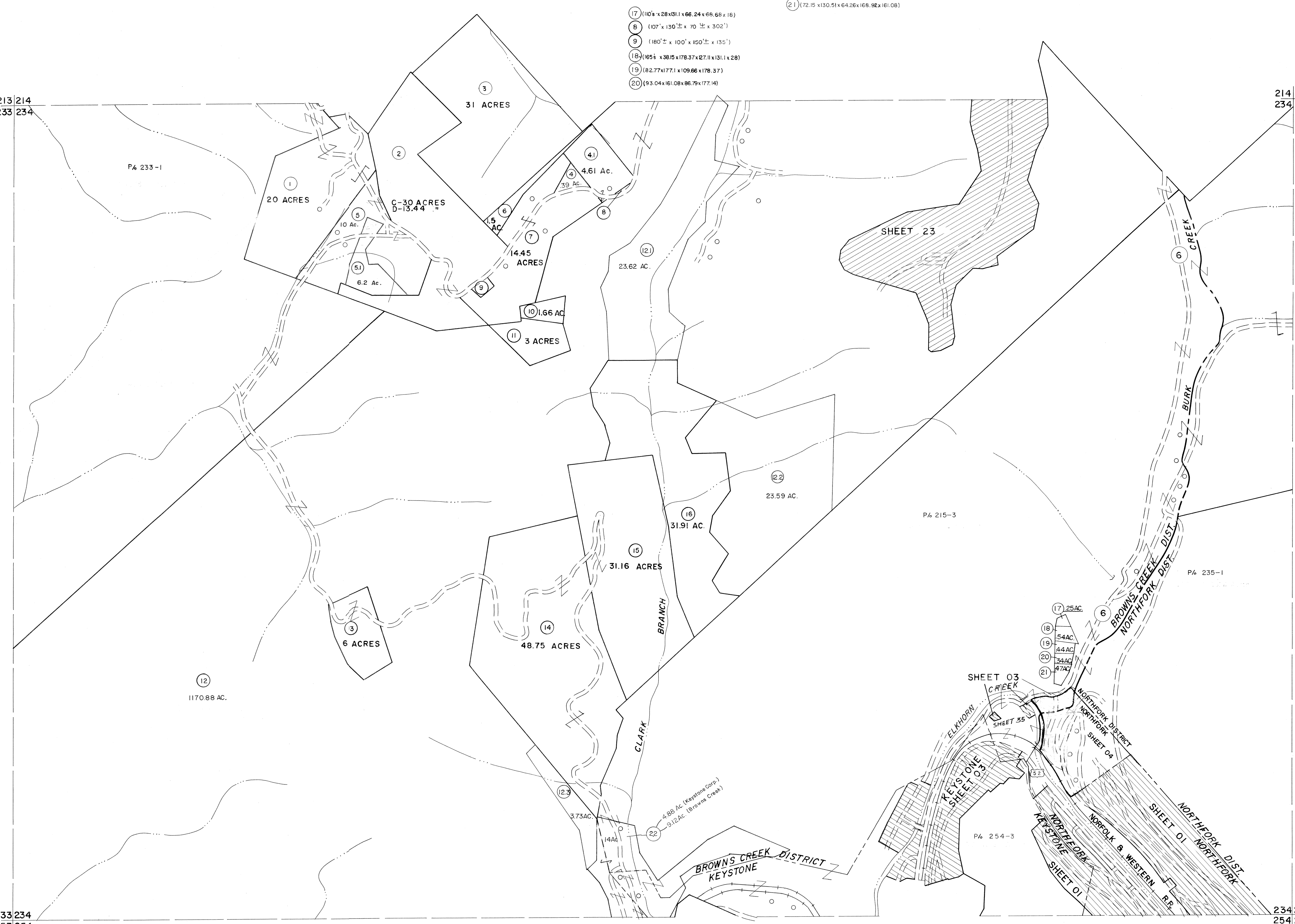
213|214
233|234

214|215
234|235

233|234
253|254

234|235
254|255

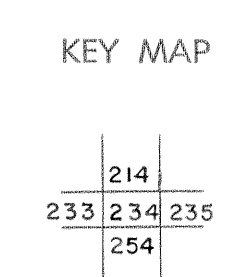
- 17 (110' x 28' x 131' x 66.24' x 66.68' x 16)
- 18 (107' x 130' x 70' x 302')
- 19 (180' x 100' x 150' x 135')
- 20 (165' x 38.15' x 178.37' x 27.11' x 131.1' x 28)
- 21 (82.77' x 177.1' x 109.66' x 178.37')
- 22 (93.04' x 161.08' x 86.79' x 177.14')



For Tax Purposes Only
 Prepared by
MICHAEL BAKER, JR., INC.
 Consulting Engineers
 Rochester, Pennsylvania

Legend	
Property line	—
Edge of pavement or roadway	—
Corporation line	—
District line	—
County line	—
Original lot line	—
Deed lot number	(15)
Parcel or index number	(20)
Improvement	○
Railroad	—+—

Revisions			
1	4-15-64	9	O.G.I.S 12-1-96 J.E.B
2	REVISED JULY 1965 jag	10	ESI 12/4/02 REK
3	12-9-74 T.C.	11	5-15-05 K.L.S
4	Revised to 7-1-83	12	
5	July 1988	13	
6	Revised to 7-1-88	14	
7	Revised to 7-1-89	15	
8	O.G.I.S 5-15-95 J.E.B	16	



McDOWELL COUNTY
 STATE OF WEST VIRGINIA
 Office of Assessor

DISTRICT	
BROWNS CREEK	
SHEET NO: 234	
Date, Aerial Photography: April, 1961	Date, Map: July, 1962
Photo No:	Scale: 1" = 400