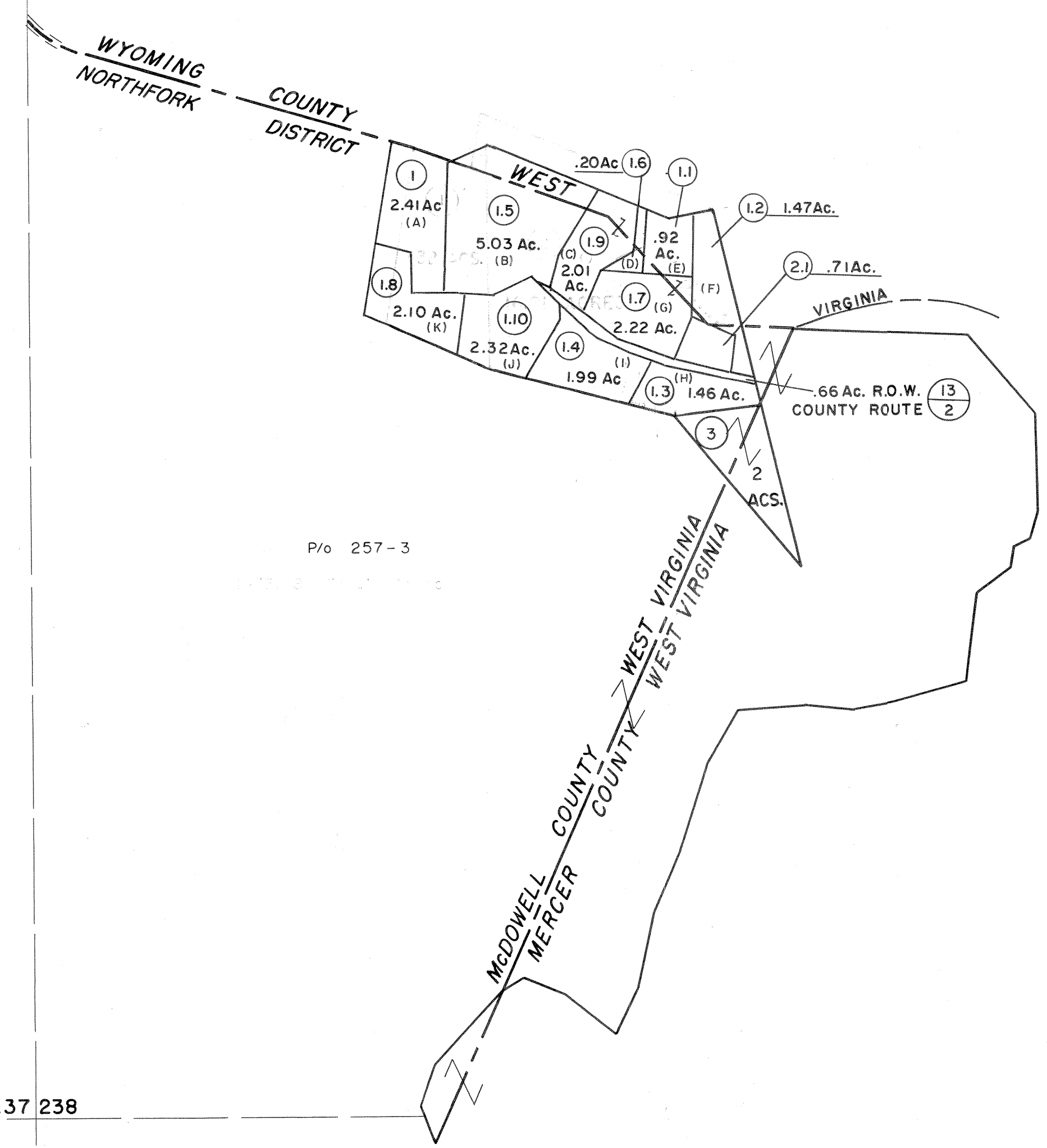


237238



P/O 257-3

237 238

For Tax Purposes Only

Prepared by
MICHAEL BAKER, JR., INC.
 Consulting Engineers
 Rochester, Pennsylvania

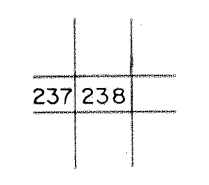
Legend

Property line	---	Original lot line	---
Edge of pavement or roadway	---	Dead lot number	(15)
Corporation line	---	Parcel or index number	(19)
District line	---	Improvement	o
County line	---	Railroad	+

Revisions

1	4-15-64	9		17	
2	12-9-74	10	T.G.	18	
3	Revised to 7-1-83	11		19	
4	July, 1985	12		20	
5	8/27/06	13	SAH	21	
6		14		22	
7		15		23	
8		16		24	

KEY MAP



MCDOWELL COUNTY
 STATE OF WEST VIRGINIA
 Office of Assessor

DISTRICT **NORTHFORK**

SHEET NO: 238

Date, Aerial Photography: April, 1961 Date, Map: July, 1962
 Photo No: Scale: 1" = 400'