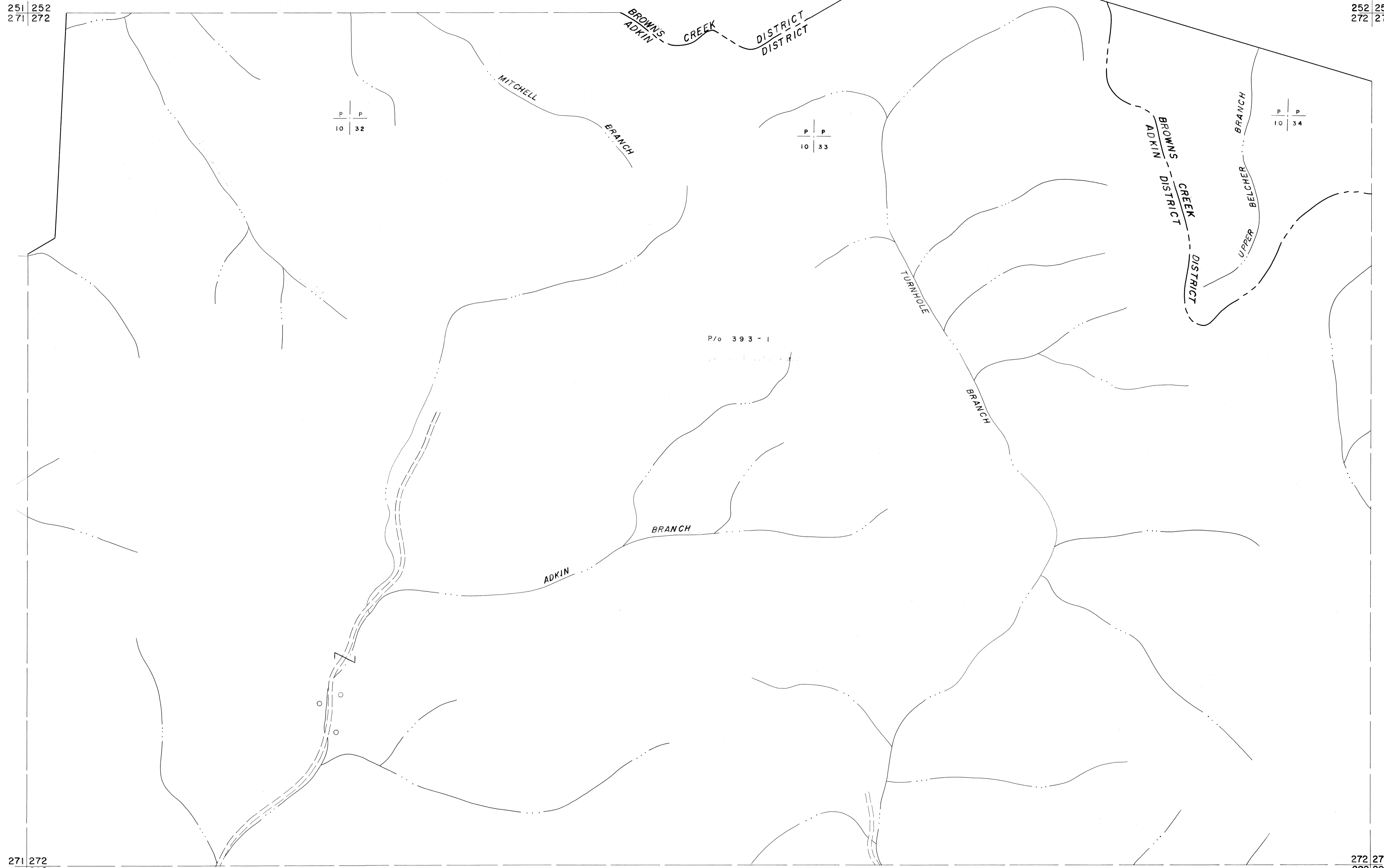


251 252  
271 272

252 253  
272 273

271 272  
291 292

272 273  
292 293



For Tax Purposes Only

Prepared by  
MICHAEL BAKER, JR., INC.  
Consulting Engineers  
Rochester, Pennsylvania

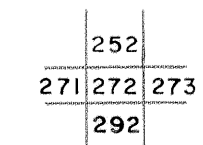
Legend

Property line	———	Original lot line	-----
Edge of pavement or roadway	-----	Dead lot number	(15)
Corporation line	-----	Parcel or index number	(20)
District line	-----	Improvement	○
County line	-----	Railroad	⊕

Revisions

1	4-15-64	9	17
2	7-1-63	10	18
3	1985	11	19
4	SLB INC. 6/26/98 DSW	12	20
5		13	21
6		14	22
7		15	23
8		16	24

KEY MAP



McDOWELL COUNTY  
STATE OF WEST VIRGINIA  
Office of Assessor

DISTRICT

ADKIN

SHEET NO: 272

Date, Aerial Photography: April, 1961 Date, Map: July, 1962  
Photo No: Scale: 1" = 400'