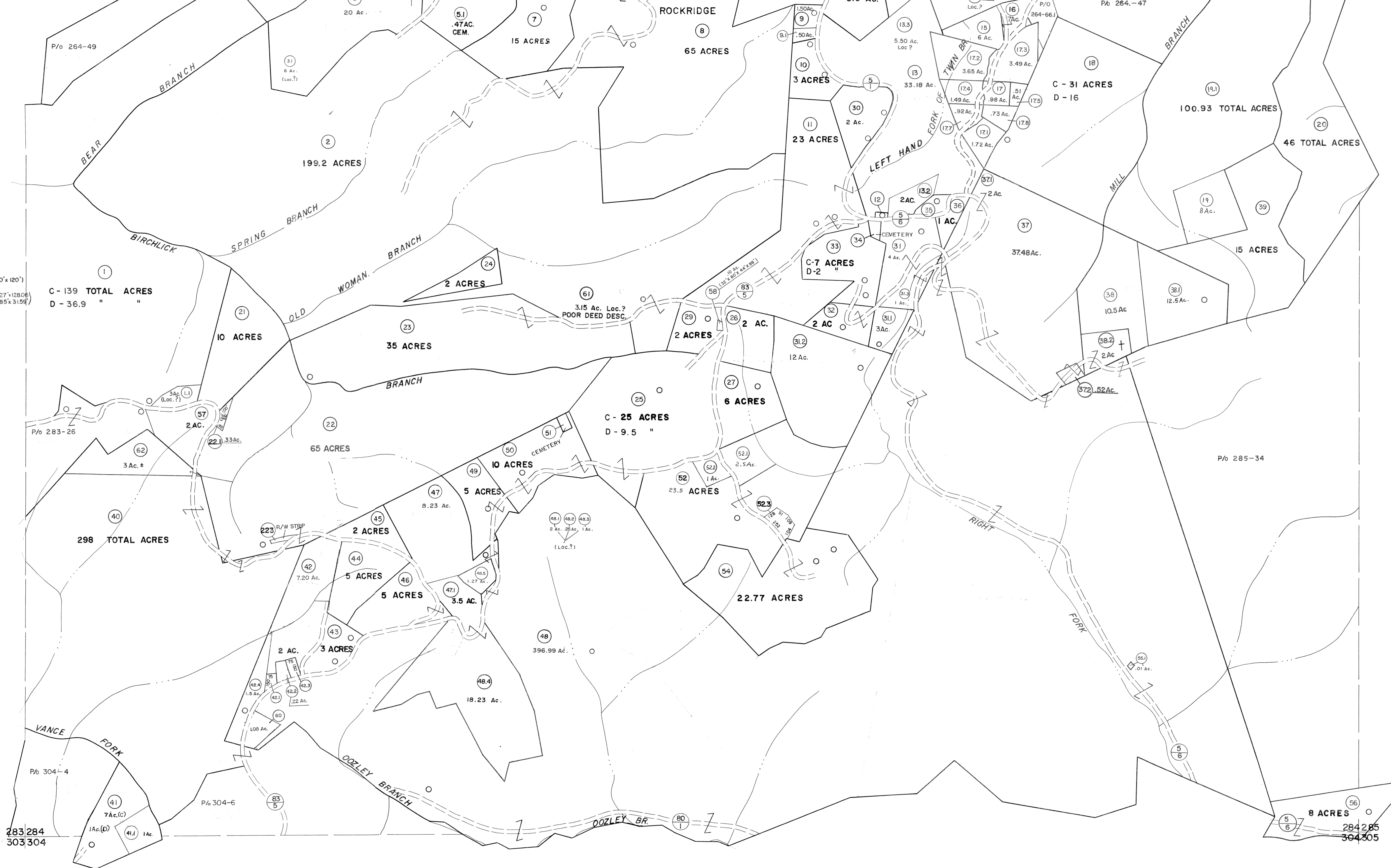


263 264  
283 284

264 265  
284 285

- 12 (100' x 60')
- 34 (100' x 184' x 80' x 120')
- 35 (273.63' x 167.27' x 128.06' x 99.94' x 90.85' x 31.54')
- 51 (90' x 125')



For Tax Purposes Only

Prepared by  
MICHAEL BAKER, JR., INC.  
Consulting Engineers  
Rochester, Pennsylvania

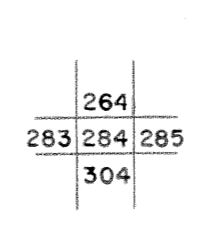
Legend

Property line	—	Original lot line	—
Edge of pavement or roadway	—	Deed lot number	(15)
Corporation line	—	Parcel or index number	(99)
District line	—	Improvement	o
County line	—	Railroad	—

Revisions

1	4-15-64	9	O.G.I.S	12-1-96	J.E.B	17
2	12-11-74	10	SLS INC.	6/26/98	JWM	18
3	Revised to 7-1-89	11	SLS INC.	12/31/98	DSW	19
4	7-1-84	12	ESI	4/28/01	REK	20
5	Revised to 7-1-88	13	S & H	12/31/05		21
6	Revised to 7-1-88	14	H & S	6-18-07		22
7	Revised to 7-1-87	15	3/28/08	S & H		23
8	O.G.I.S 5-15-95	16	2-7-10	H & S		24

KEY MAP



**McDOWELL COUNTY**  
STATE OF WEST VIRGINIA  
Office of Assessor

DISTRICT  
**SANDY RIVER**

**SHEET NO: 284**

Date, Aerial Photography: April, 1961 Date, Map: July, 1964  
Photo No: Scale: 1" = 400'