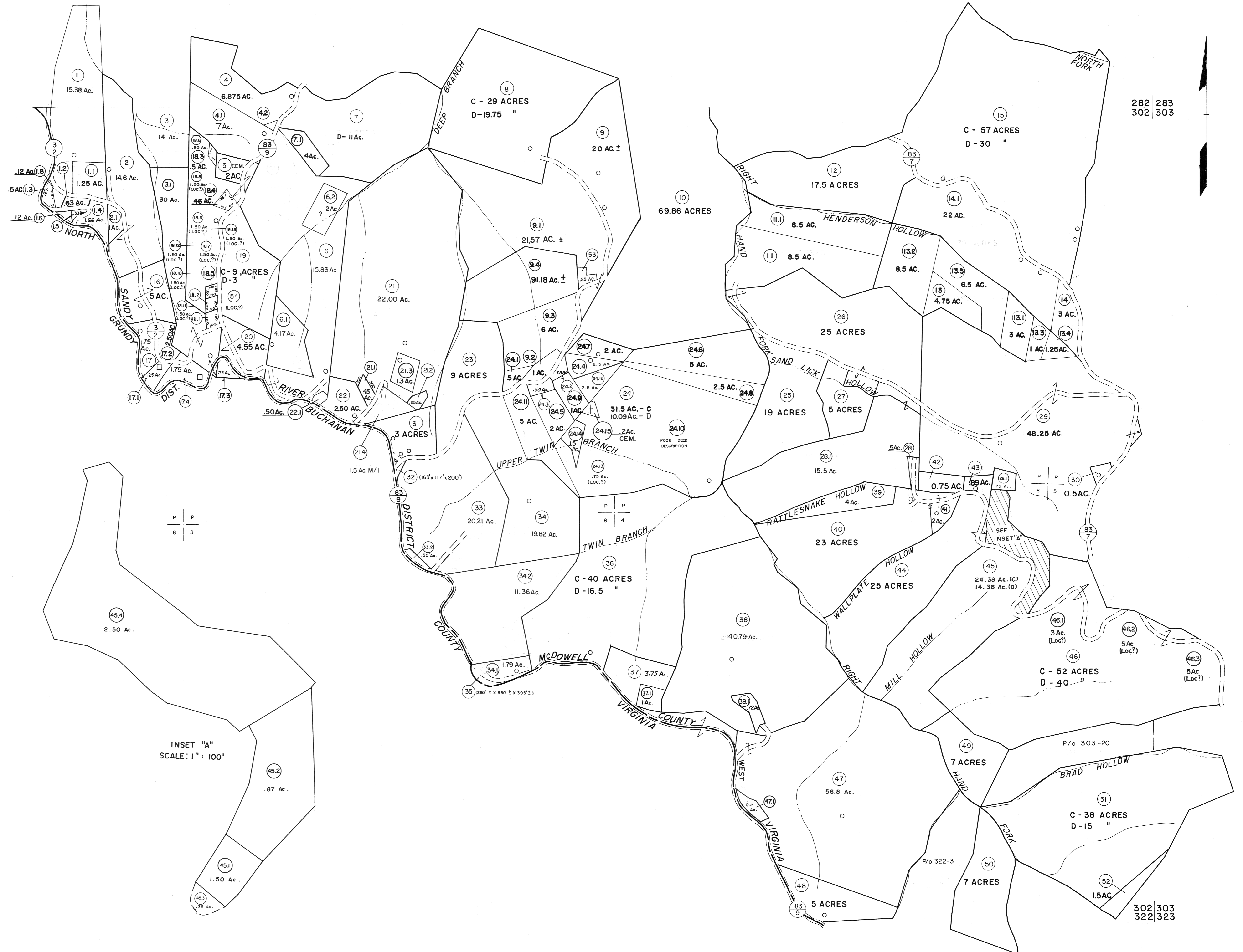


281 | 282  
302

282 | 283  
302 | 303



P P  
8 3

INSET "A"  
SCALE: 1" = 100'

302 | 322

302 | 303  
322 | 323

For Tax Purposes Only

Prepared by  
MICHAEL BAKER, JR., INC.  
Consulting Engineers  
Rochester, Pennsylvania

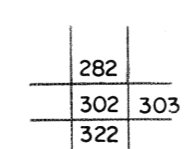
Legend

Property line	-----	Original lot line	-----
Edge of pavement or roadway	-----	Dead lot number	(15)
Corporation line	-----	Parcel or index number	(99)
District line	-----	Improvement	o
County line	-----	Railroad	-----

Revisions

1	4-15-64	9	O.G.I.S	12-1-96	J.E.B	17	3/28/08	S.B.H
2	12-3-74	10	SLS INC.	6/26/98	J.W.M	18	2-7-10	H.H.S
3	Revised to 7-1-85	11	SLS INC.	1/14/99	D.S.W	19	3/2/14	S.B.H
4	7-1-84	12	L.E.S.	4/27/01	REK	20	2/28/17	S.L.S
5	Revised to 7-1-88	13	ESI	12/5/02	REK	21		
6	Revised to 7-1-88	14	5/23/04		S.B.H	22		
7	Revised to 7-1-89	15	5-15-05		H.H.S	23		
8	O.G.I.S	16	5-15-95	J.E.B	S.B.H	24	8/27/06	

KEY MAP



McDOWELL COUNTY

STATE OF WEST VIRGINIA

Office of Assessor

DISTRICT

SANDY RIVER

SHEET NO: 302

Date, Aerial Photography: April, 1961  
Photo No:

Date, Map: July, 1962  
Scale: 1" = 400'