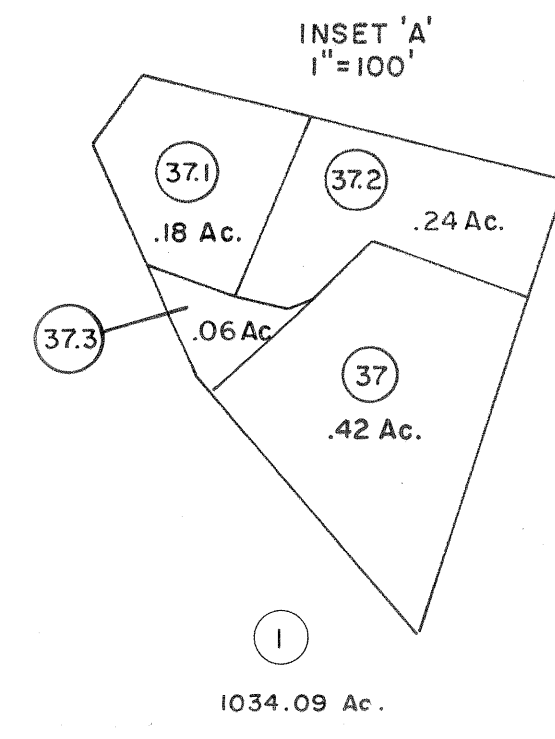
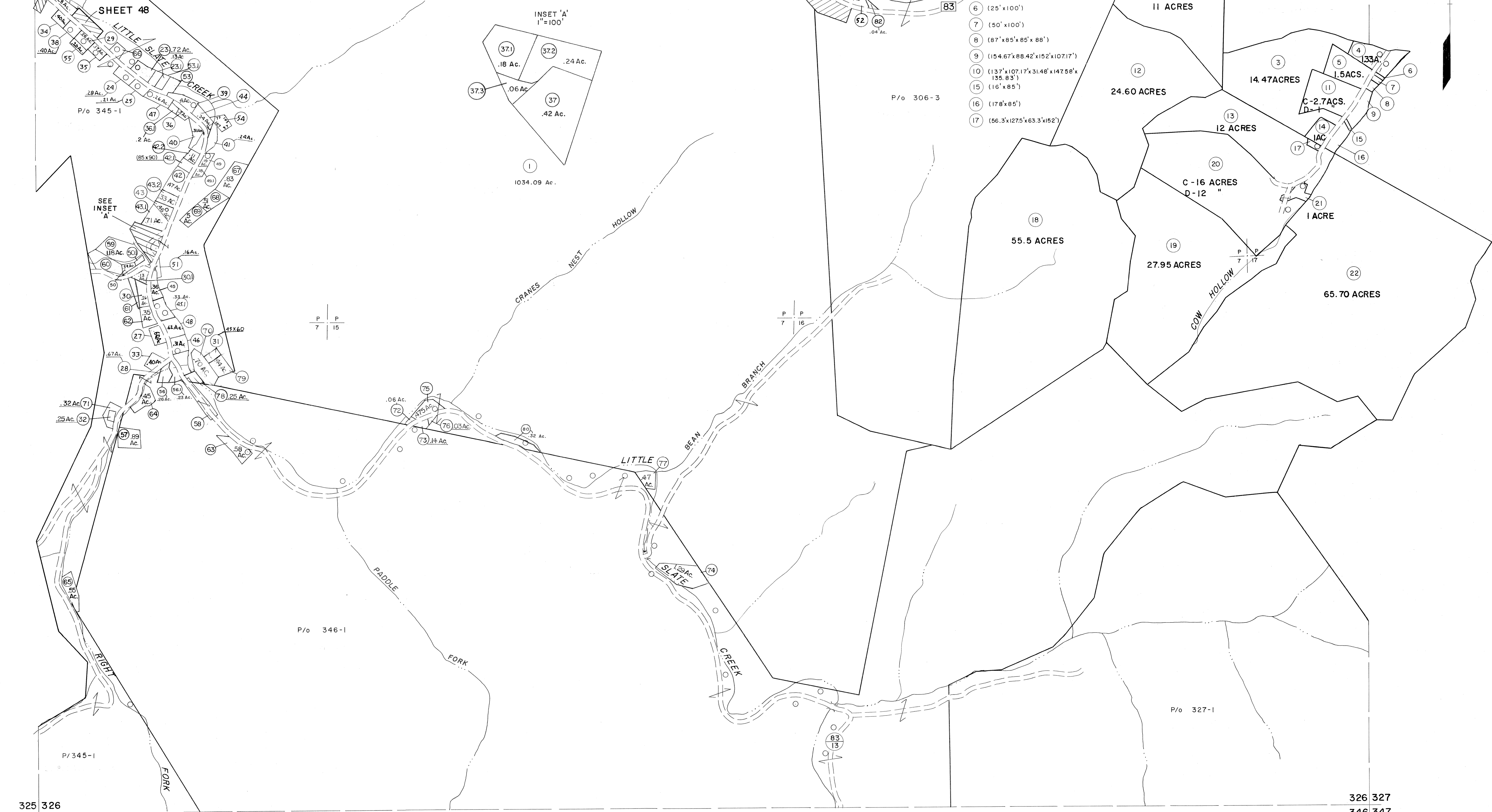


305 306  
325 326

306 307  
326 327



- 6 (25' x 100')
- 7 (50' x 100')
- 8 (87' x 85' x 85' x 88')
- 9 (154.67' x 88.42' x 152' x 107.17')
- 10 (137' x 107.17' x 31.48' x 147.58' x 135.83')
- 15 (16' x 85')
- 16 (178' x 85')
- 17 (56.3' x 127.5' x 63.3' x 152')

325 326

326 327

345 346

346 347

- 58 (2-(10x400) Strips)
- 50 (86.01 x 83.51 x 86.01 x 30s)
- 60 (256 x 107 x 46 x 70 x 100 x 136 x 72)
- 61 (6.25 x 83.1 x 88.43 x 23.33 x 6.05 x 259.34 x 90.72 x 77.43 x 29.11)
- 66 (103.26 x 84.77 x 103.26 x 97.91) .21 Ac.
- 36 (.20 Ac.)
- 37 (.68 Ac.)
- 39 (.40 Ac.)
- 40 (.31 Ac.)
- 45 (.13 Ac.)
- 46 (.20 Ac.)
- 53 (.66 Ac.)
- 53 (.15 Ac.)

For Tax Purposes Only

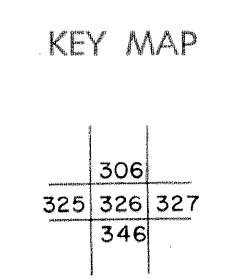
Prepared by  
**MICHAEL BAKER, JR., INC.**  
Consulting Engineers  
Rochester, Pennsylvania

**Legend**

Property line	—	Original lot line	- - - - -
Edge of pavement or roadway	—	Deed lot number	(15)
Corporation line	—	Parcel or index number	(22)
District line	—	Improvement	o
County line	—	Railroad	—

**Revisions**

1	4-15-64	9	O.G.I.S	12-1-96	J.E.B	17
2	12-6-74	10	ES1	12/5/02	REK	18
3	July 1983	11	S&H	12/31/05		19
4	7-1-84	12	S&H	8/27/06		20
5	July 1985	13				21
6	Revised to 7-1-88	14				22
7	Revised to 7-1-87	15				23
8	O.G.I.S 5-15-95	16	J.E.B			24



**McDOWELL COUNTY**  
STATE OF WEST VIRGINIA  
Office of Assessor

DISTRICT

**BIG CREEK**

**SHEET NO: 326**

Date, Aerial Photography: April, 1961 Date, Map: July, 1962  
Photo No: Scale: 1" = 400'