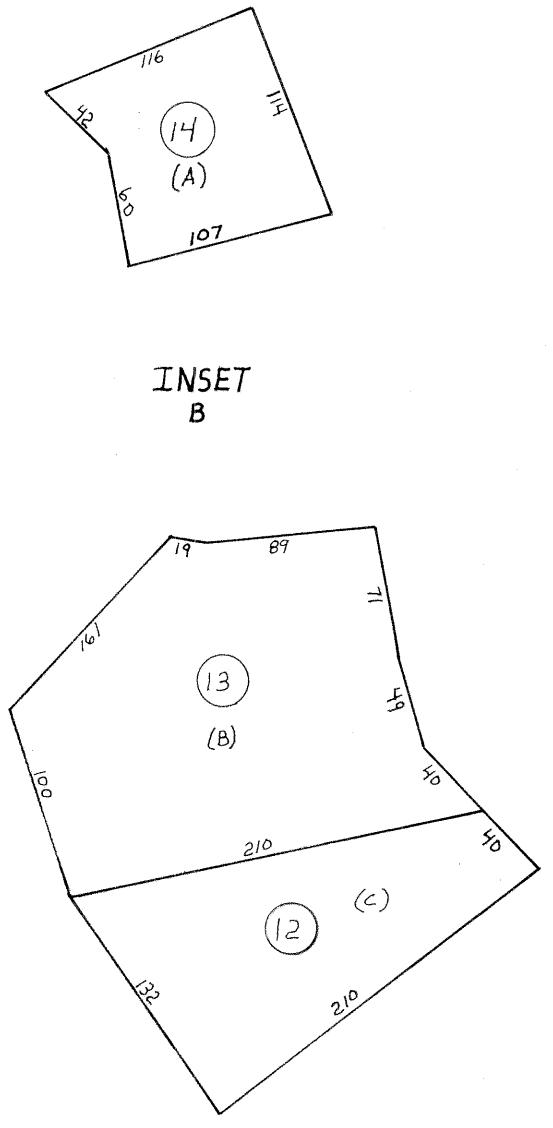
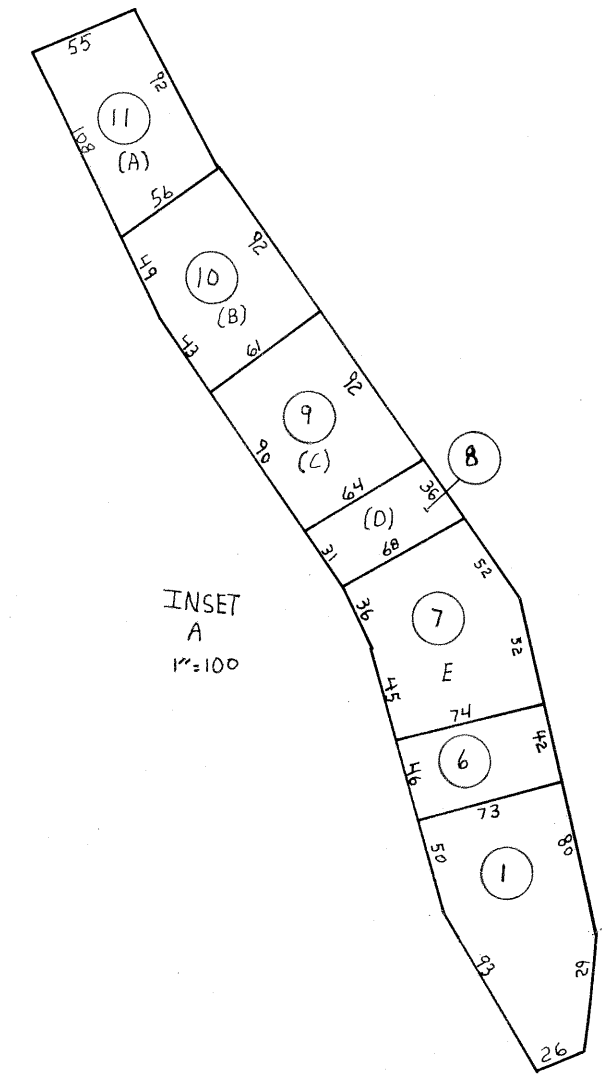
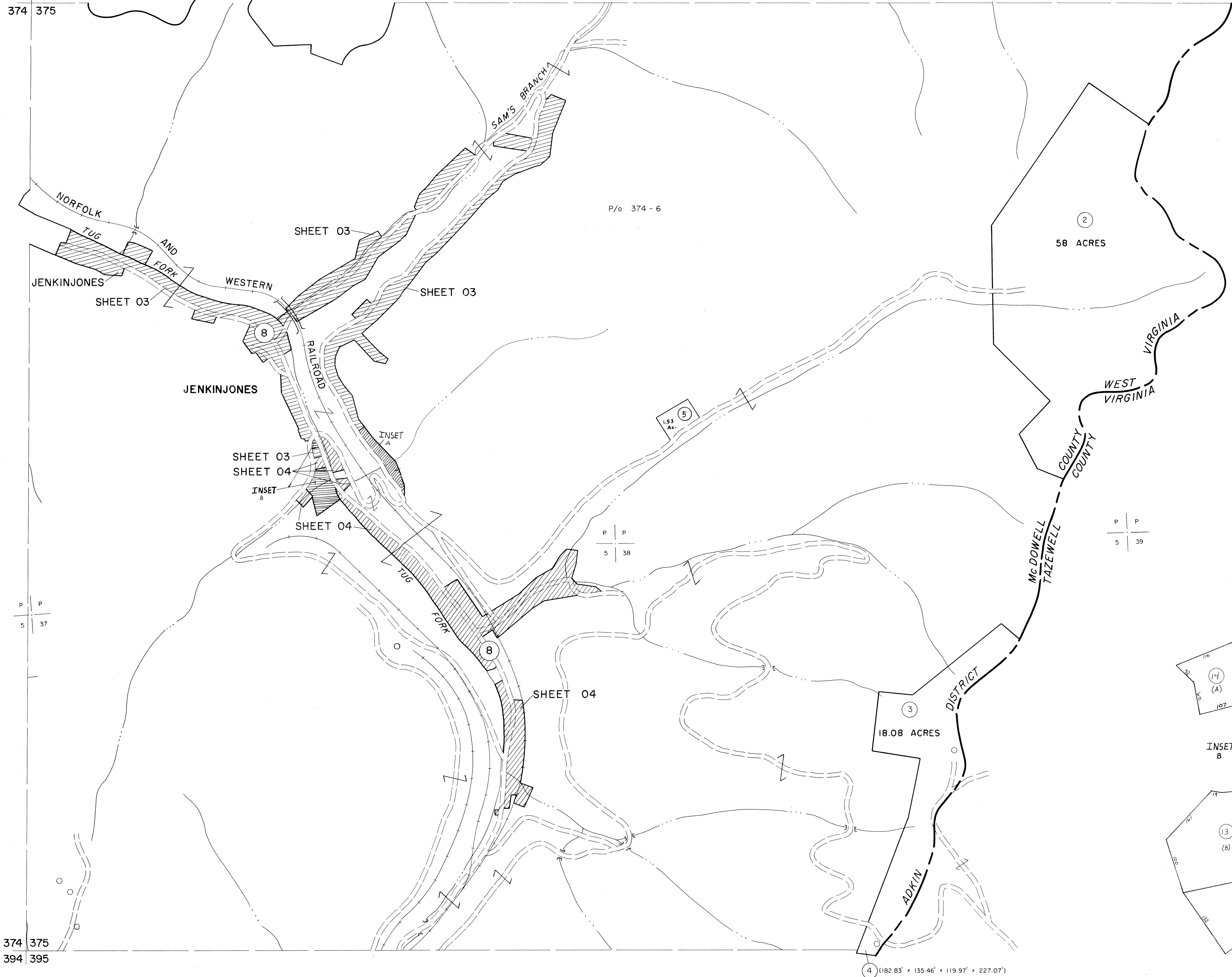


354 355
374 375

355 356
375 375



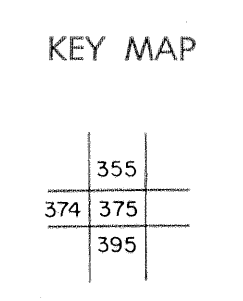
374 375
394 395

375 395

For Tax Purposes Only
 Prepared by
MICHAEL BAKER, JR., INC.
 Consulting Engineers
 Rochester, Pennsylvania

Legend	
Property line	—————
Edge of pavement or roadway	—————
Corporation line	—————
District line	—————
County line	—————
Original lot line	-----
Dead lot number	(15)
Parcel or index number	(29)
Improvement	○
Railroad	—+—+—+—

Revisions	
1	4-15-64
2	12-11-74 T.G.
3	To JULY 1983 C.P.
4	6/26/98 JWM
5	SLS INC. 6/26/98 JWM
6	
7	
8	



MCDOWELL COUNTY
 STATE OF WEST VIRGINIA
 Office of Assessor

DISTRICT **ADKIN**
SHEET NO: 375
 Date, Aerial Photography: April, 1961 Date, Map: July, 1962
 Photo No: Scale: 1" = 400'