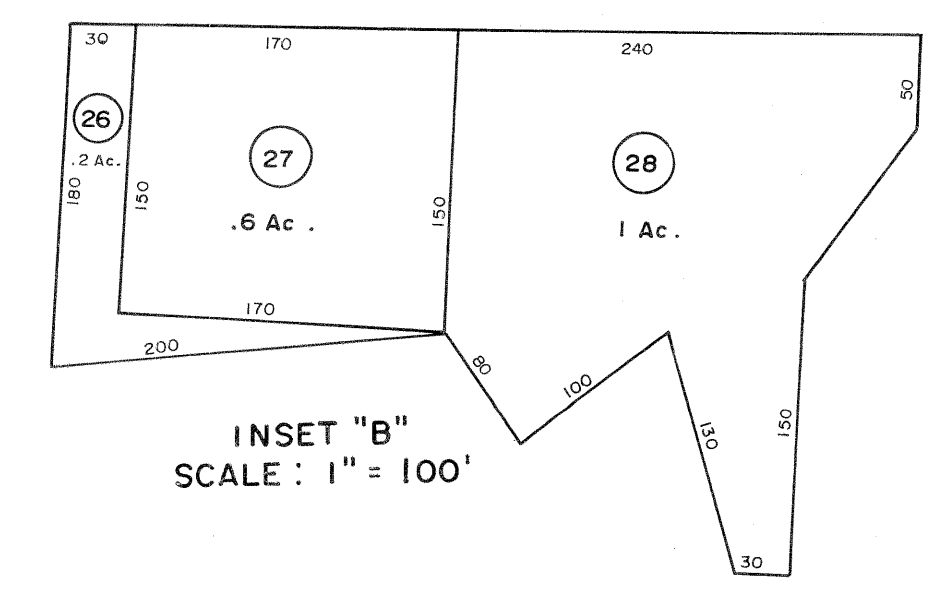
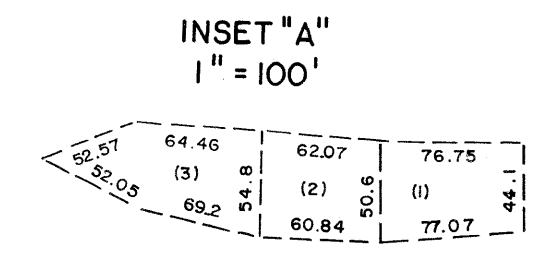
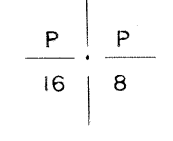
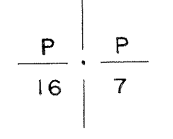
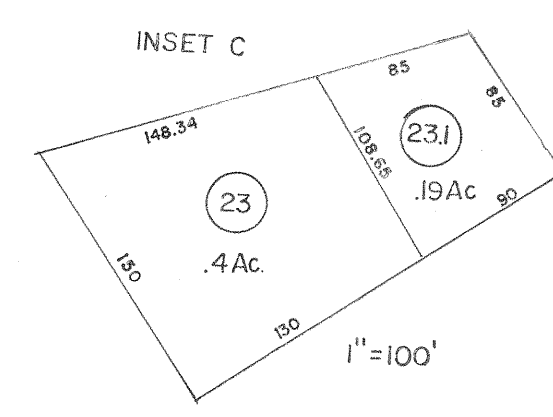


122

103
122 123



For Tax Purposes Only

Prepared by
MICHAEL BAKER, JR., INC.
Consulting Engineers
Rochester, Pennsylvania

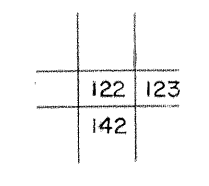
Legend

| | | | |
|-----------------------------|-------|------------------------|-------|
| Property line | ----- | Original lot line | ----- |
| Edge of pavement or roadway | ----- | Deed lot number | (15) |
| Corporation line | ----- | Parcel or index number | (22) |
| District line | ----- | Improvement | o |
| County line | ----- | Railroad | ----- |

Revisions

| No. | Description | Date | By |
|-----|-------------------|---------|--------|
| 1 | 4-15-64 | 8/27/06 | S&H |
| 2 | Revised to 7-1-83 | | |
| 3 | July 88 | | |
| 4 | Revised to 7-1-86 | | |
| 5 | O.G.I.S. 12-1-96 | | J.E.B. |
| 6 | SLS INC. 6/22/98 | | DSW |
| 7 | SLS INC. 12/29/98 | | DSW |
| 8 | 5/24/04 | | S&H |

KEY MAP



McDOWELL COUNTY
STATE OF WEST VIRGINIA
Office of Assessor

DISTRICT
SANDY RIVER

SHEET NO: 122

Date, Aerial Photography: April, 1961 Date, Map: July, 1962
Photo No: Scale: 1" = 400'