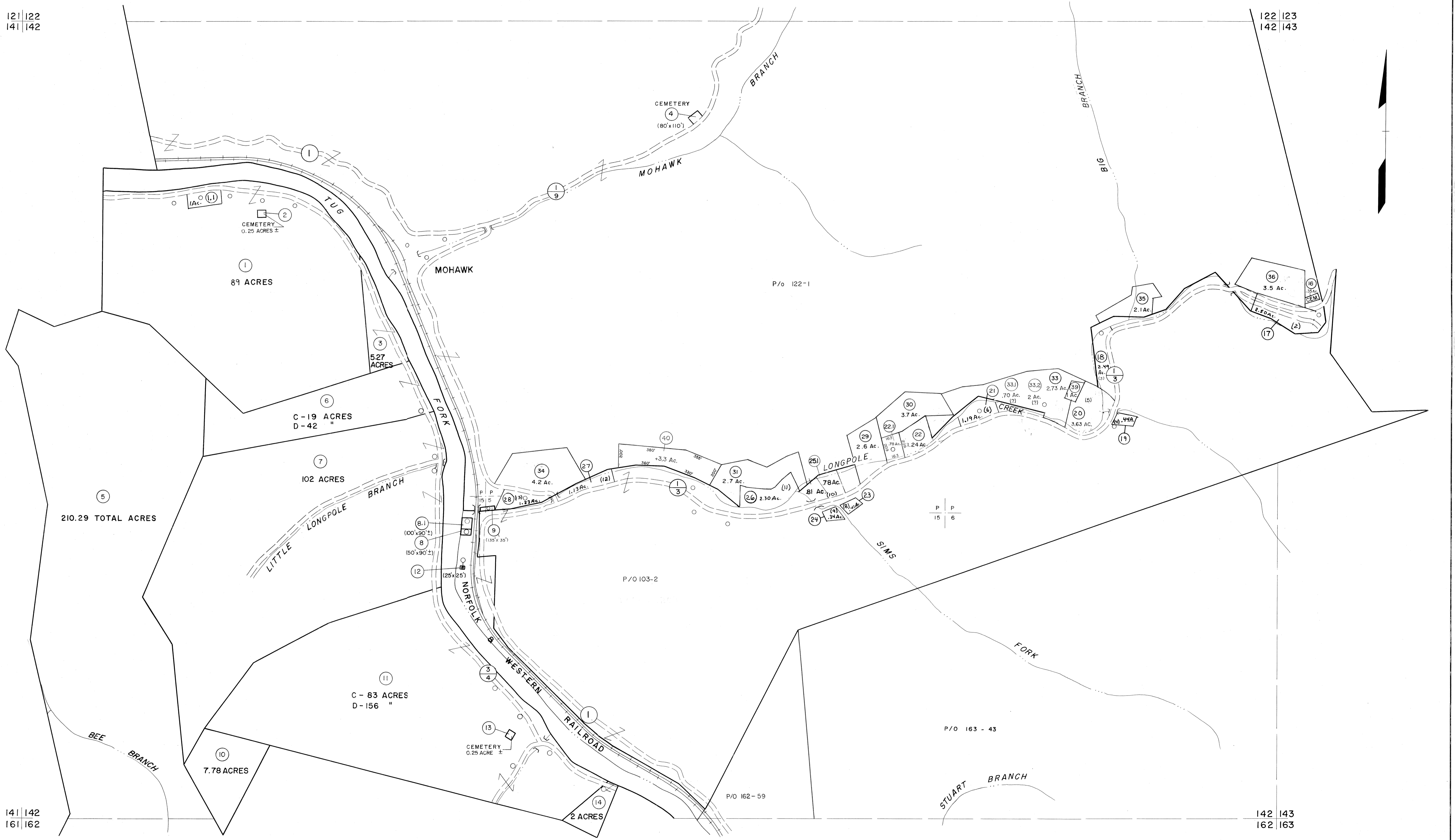


121 | 122  
141 | 142

122 | 123  
142 | 143

141 | 142  
161 | 162

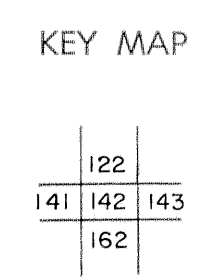
142 | 143  
162 | 163



For Tax Purposes Only  
 Prepared by  
**MICHAEL BAKER, JR., INC.**  
 Consulting Engineers  
 Rochester, Pennsylvania

Legend	
Property line	Original lot line
Edge of pavement or roadway	Deed lot number
Corporation line	Parcel or index number
District line	Improvement
County line	Railroad

Revisions	
1 4-15-64	9 SLS INC. 12/29/98 DSW 17
2 12-3-74 T.G.	10 ESI 12/4/02 REK 18
3 Revised to 7-1-83	11 19
4 July 1988	12 20
5 O.G.I.S 5-15-95 J.E.B.	13 21
6 O.G.I.S 12-1-96 J.E.B.	14 22
7 SLS INC. 6/22/99 DSW	15 23
8	16 24



**McDOWELL COUNTY**  
 STATE OF WEST VIRGINIA  
 Office of Assessor

DISTRICT  
**SANDY RIVER**  
 SHEET NO: 142  
 Date, Aerial Photography: April, 1961 Date, Map: July 1962  
 Photo No: Scale: 1"= 400'