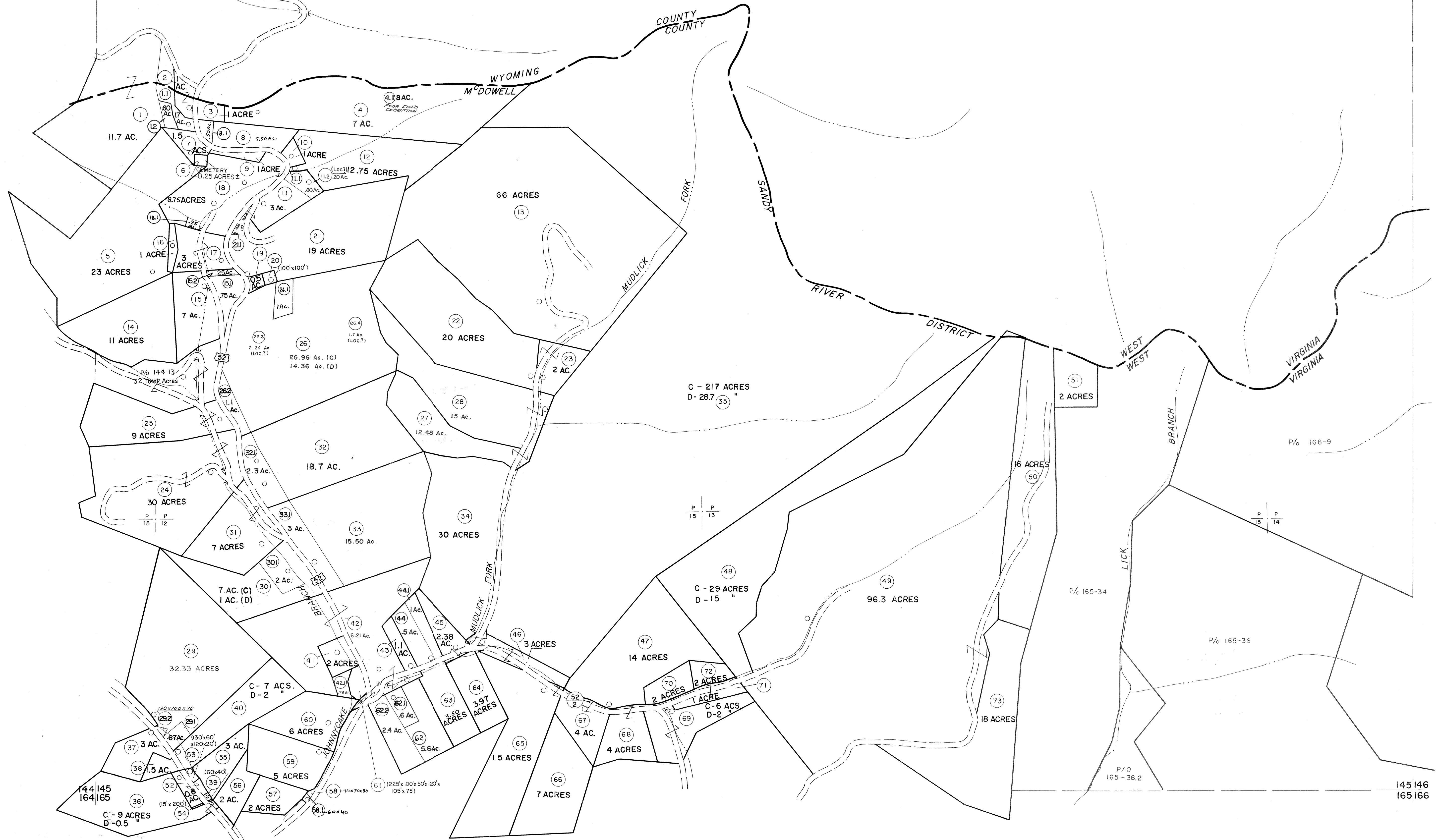


124  
144|145

145|146



**For Tax Purposes Only**

Prepared by  
**MICHAEL BAKER, JR., INC.**  
Consulting Engineers  
Rochester, Pennsylvania

**Legend**

Property line	—	Original lot line	---
Edge of pavement or roadway	—	Deed lot number	(15)
Corporation line	---	Parcel or index number	(22)
District line	---	Improvement	○
County line	---	Railroad	—

**Revisions**

1	4-15-64	9	8/27/06	S&H	17
2	12-3-74	10	6-18-07	H&S	18
3	Revised to 7-1-88	11			19
4	Revised to 7-1-88	12			20
5	Revised to 7-1-88	13			21
6	O.G.I.S 5-15-95	14			22
7	O.G.I.S 12-1-96	15			23
8	ES1 4/19/01	16			24

**KEY MAP**



**McDOWELL COUNTY**  
STATE OF WEST VIRGINIA  
Office of Assessor

**DISTRICT**

**SANDY RIVER**

**SHEET NO: 145**

Date, Aerial Photography: April, 1961 Date, Map: July, 1962  
Photo No: Scale: 1" = 400'