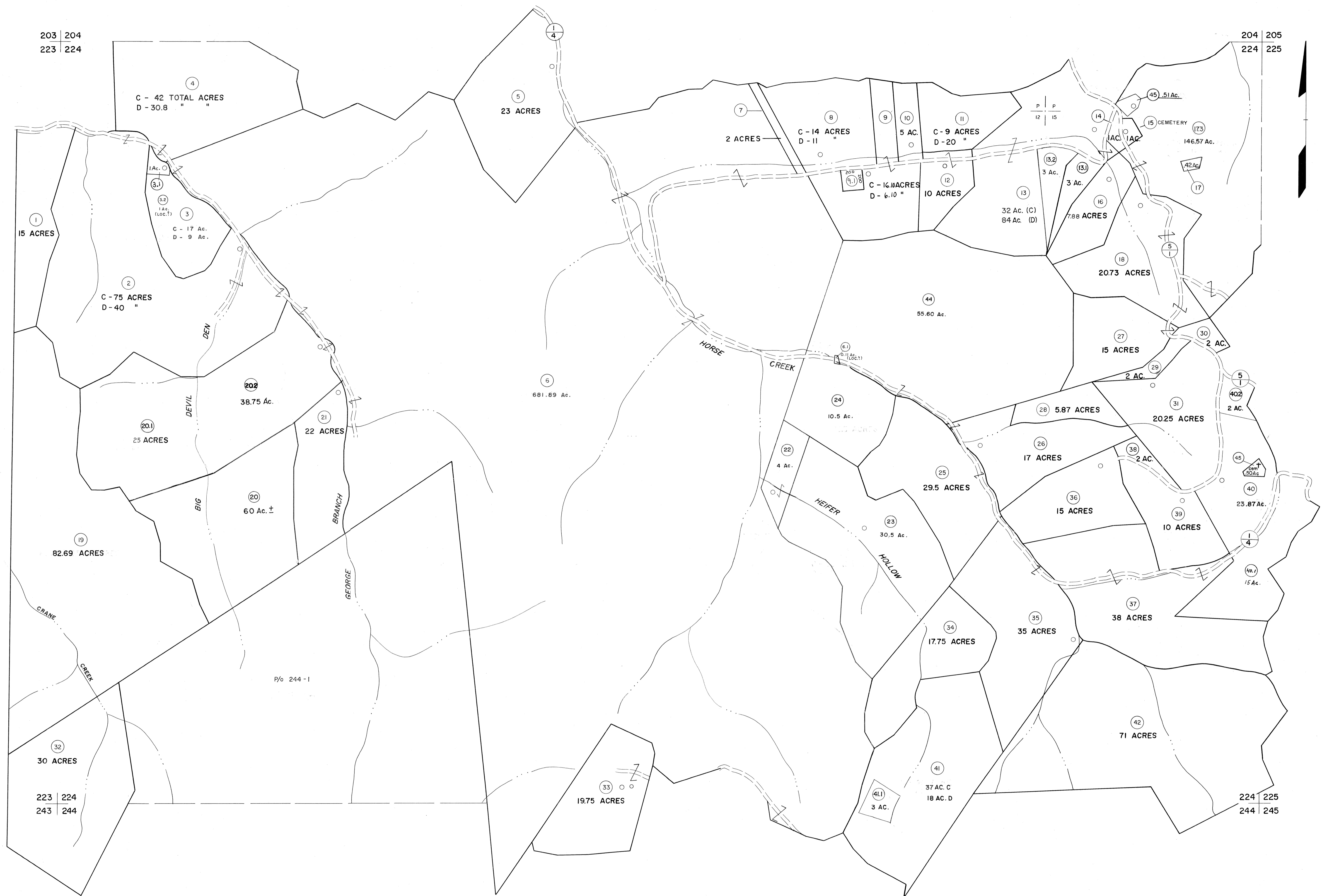


203 | 204
223 | 224

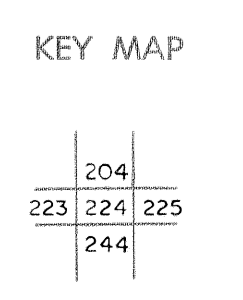
204 | 205
224 | 225



For Tax Purposes Only
 Prepared by
MICHAEL BAKER, JR., INC.
 Consulting Engineers
 Rochester, Pennsylvania

Legend	
Property line	Original lot line
Edge of pavement or roadway	Deed lot number (15)
Corporation line	Parcel or index number (29)
District line	Improvement (0)
County line	Railroad

Revisions	
1 4-15-64	9 SLS INC. 12/30/98 DSW 17
2 12-6-74 T.G.	10 ESI 4/24/01 REK 18
3 Revised to 7-1-83 S.H.	11 5/23/04 S.B.H. 19
4 7-1-84 L.E.S.	12 5-15-05 V.E.S. 20
5 July 1988 H.L.	13 8/27/06 S.B.H. 21
6 Revised to 7-1-88 S.H.	14 22
7 Revised to 7-1-89 S.H.	15 23
8 O.G.I.S. 5-15-95 J.E.B.	16 24



McDOWELL COUNTY
 STATE OF WEST VIRGINIA
 Office of Assessor

DISTRICT
SANDY RIVER
 SHEET NO: 224
 Date, Aerial Photography: April, 1961 Date, Map: July, 1962
 Photo No: Scale: 1" = 400'