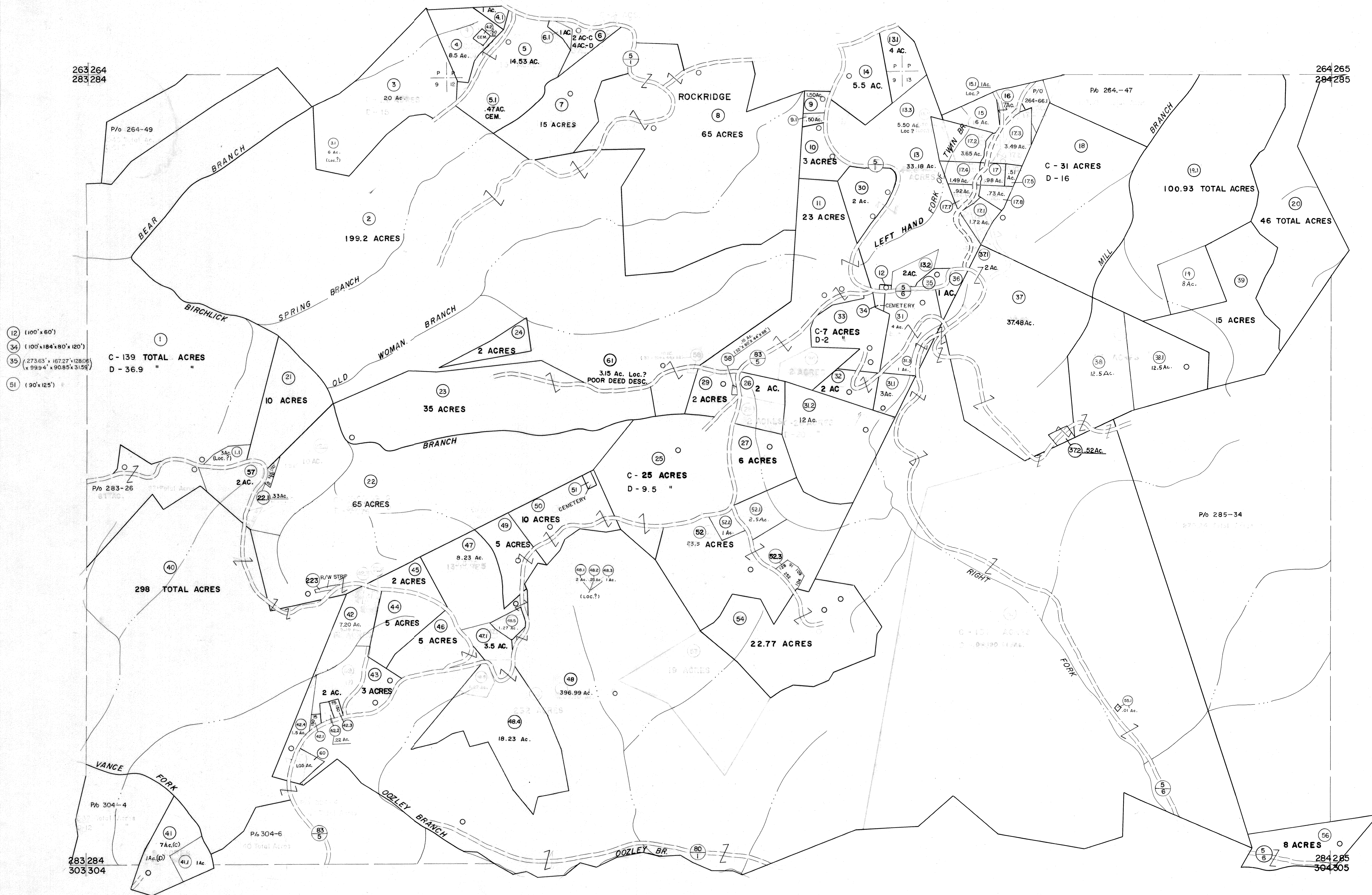


263 264
283 284

264 265
284 285



- (12) (100' x 60')
- (34) (100' x 184' x 80' x 120')
- (35) (273.63' x 167.27' x 128.06' x 99.94' x 90.85' x 31.59')
- (51) (90' x 125')

C - 139 TOTAL ACRES
D - 36.9 "

C - 25 ACRES
D - 9.5 "

C - 7 ACRES
D - 2 "

C - 31 ACRES
D - 16 "

For Tax Purposes Only

Prepared by
MICHAEL BAKER, JR., INC.
Consulting Engineers
Rochester, Pennsylvania

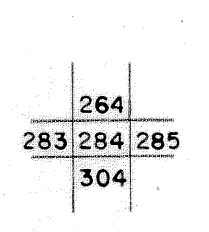
Legend

Property line	— — — — —	Original lot line	— — — — —
Edge of pavement or roadway	— — — — —	Deed lot number	(15)
Corporation line	— — — — —	Parcel or index number	(29)
District line	— — — — —	Improvement	○
County line	— — — — —	Railroad	— — — — —

Revisions

1	4-15-64	9	O.G.I.S	12-1-96	J.E.B	17
2	12-11-74	10	SLS INC.	6/26/98	JWM	18
3	Revised to 7-1-89	11	SLS INC.	12/31/98	DSW	19
4	7-1-84	12	ESI	4/26/01	REK	20
5	Revised to 7-1-89	13	S.A.H	12/31/05	REK	21
6	Revised to 7-1-89	14	H.A.S	6-18-07		22
7	Revised to 7-1-89	15				23
8	O.G.I.S 5-15-95	16				24

KEY MAP



McDOWELL COUNTY
STATE OF WEST VIRGINIA
Office of Assessor

DISTRICT
SANDY RIVER

SHEET NO: 284

Date, Aerial Photography: April, 1961 Date, Map: July, 1962
Photo No: Scale: 1" = 400'