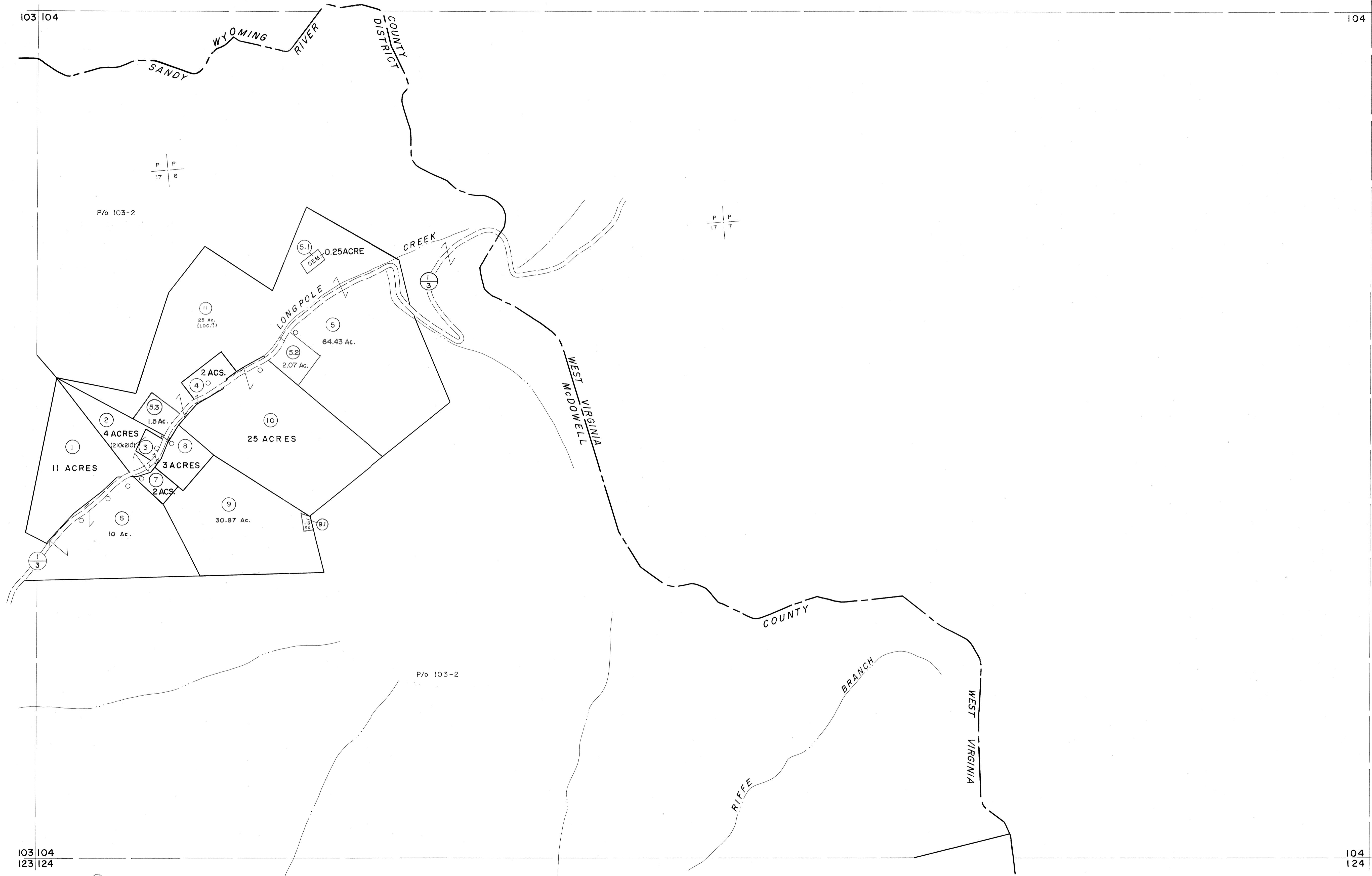


103 104

104



103 104  
123 124

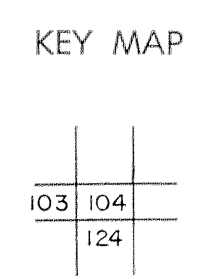
104  
124

(46' x 44' x 126' x 100')

**For Tax Purposes Only**  
 Prepared by  
**MICHAEL BAKER, JR., INC.**  
 Consulting Engineers  
 Rochester, Pennsylvania

Legend	
Property line	—————
Edge of pavement or roadway	—————
Corporation line	—————
District line	—————
County line	—————
Original lot line	—————
Deed lot number	(15)
Parcel or index number	(99)
Improvement	○
Railroad	—————

Revisions			
1	4-15-64	9	17
2	Revised to 7-1-68	10	18
3	11/1/68	11	19
4	0.61 S 5-15-95 J.E.B	12	20
5	5/24/04 SBH	13	21
6	5-15-05 HRS	14	22
7		15	23
8		16	24



**McDOWELL COUNTY**  
 STATE OF WEST VIRGINIA  
 Office of Assessor

DISTRICT  
**SANDY RIVER**  
 SHEET NO: 104  
 Date, Aerial Photography: April, 1961 Date, Map: July, 1962  
 Photo No: Scale: 1" = 400'