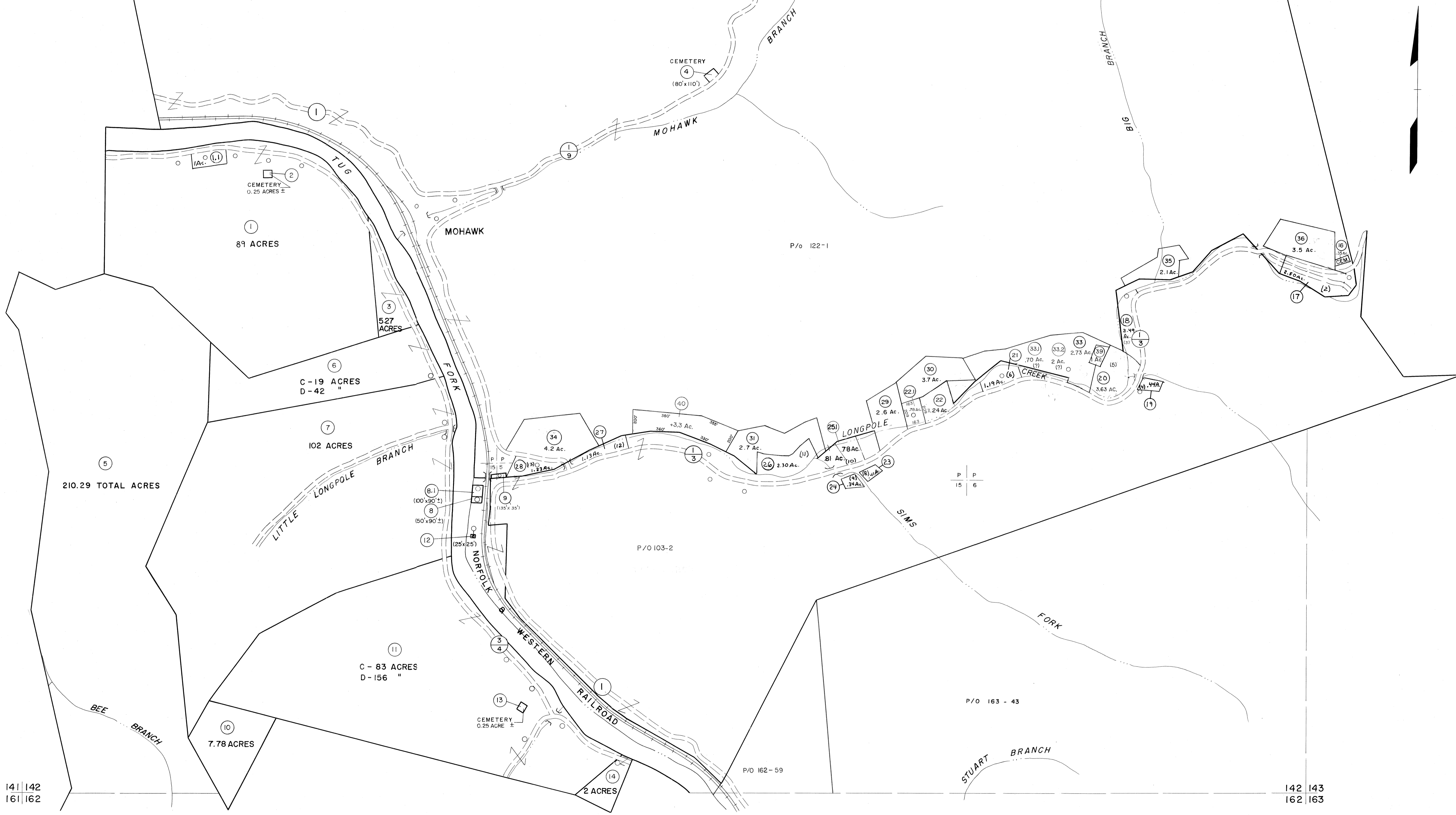


121 | 122  
141 | 142

122 | 123  
142 | 143



141 | 142  
161 | 162

142 | 143  
162 | 163

**For Tax Purposes Only**

Prepared by  
**MICHAEL BAKER, JR., INC.**  
Consulting Engineers  
Rochester, Pennsylvania

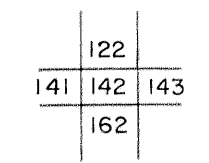
**Legend**

Property line	—	Original lot line	---
Edge of pavement or roadway	—	Deed lot number	(15)
Corporation line	—	Parcel or index number	(99)
District line	---	Improvement	○
County line	---	Railroad	—

**Revisions**

1	4-15-64	9	SLS INC. 12/29/98	DSW	17
2	12-3-74	10	ESI	12/4/02	REK
3	Revised to 7-1-83	11			
4	July 1988	12			
5	O.G.I.S 5-15-95	13	J.E.B		
6	O.G.I.S 12-1-96	14			
7	SLS INC. 6/22/99	15	DSW		
8		16			

**KEY MAP**



**McDOWELL COUNTY**  
STATE OF WEST VIRGINIA  
Office of Assessor

DISTRICT  
**SANDY RIVER**

**SHEET NO: 142**

Date, Aerial Photography: April, 1961 Date, Map: July 1962  
Photo No: Scale: 1"=400'