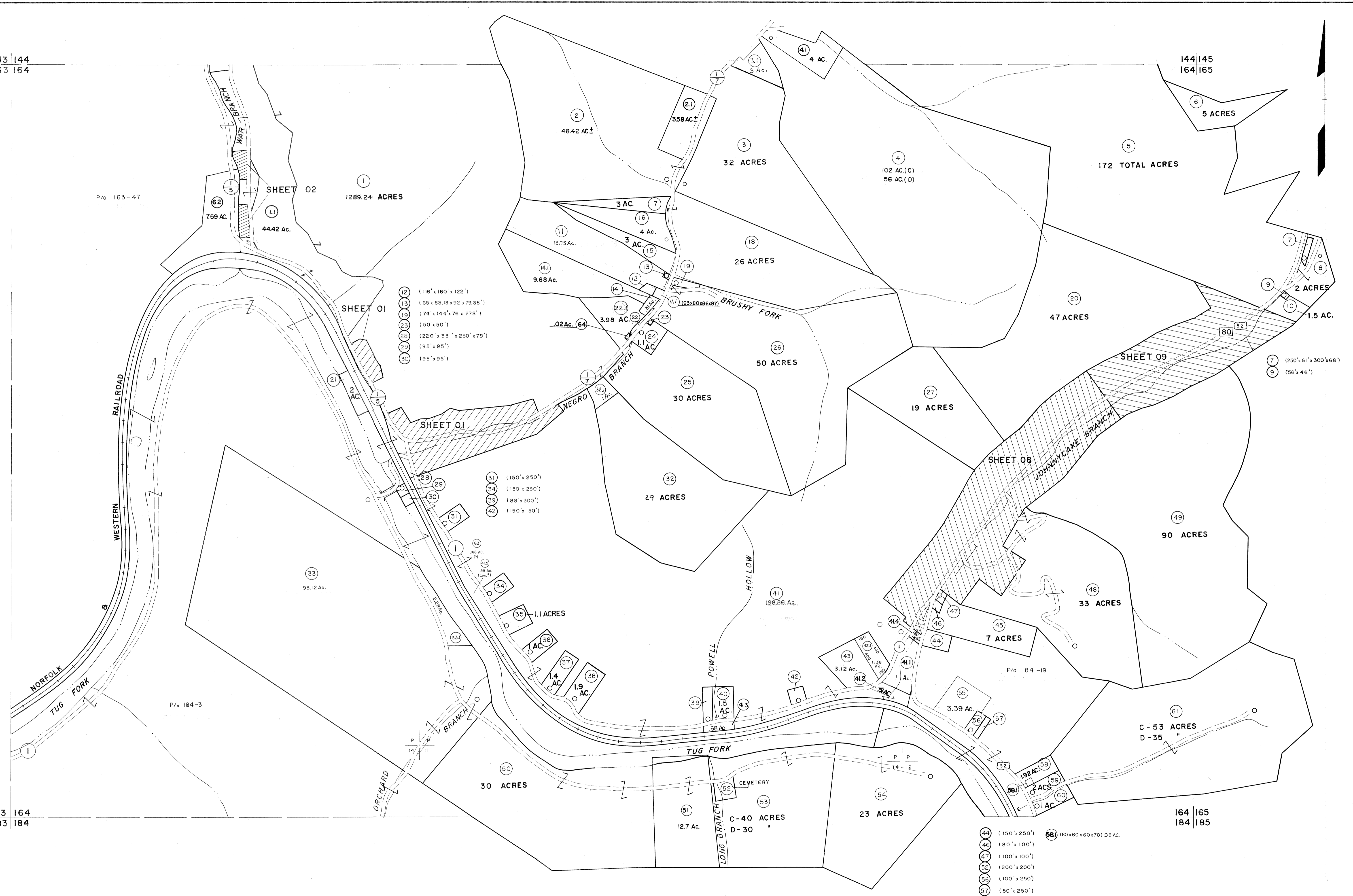


143 144  
163 164

144 145  
164 165

163 164  
183 184

164 165  
184 185

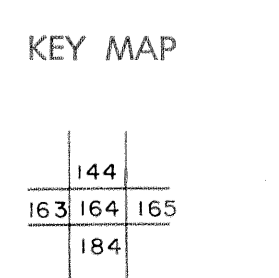


For Tax Purposes Only

Prepared by  
MICHAEL BAKER, JR., INC.  
Consulting Engineers  
Rochester, Pennsylvania

Legend	
Property line	—
Edge of pavement or roadway	—
Corporation line	—
District line	—
County line	—
Original lot line	—
Deed lot number	(15)
Parcel or index number	(22)
Improvement	o
Railroad	—

Revisions	
1	4-15-64
2	12-4-74 T.G.
3	Revised to 7-1-83 S.B.H.
4	7-1-84 L.E.S.
5	July, 1988 T.G.
6	Revised to 7-1-88 S.B.H.
7	Revised to 7-1-89 S.B.H.
8	O.G.I.S. 5-15-95 J.E.B.
9	O.G.I.S. 12-1-96 J.E.B.
10	SLS INC. 6/22/98 DSW
11	SLS INC. 12/29/98 DSW
12	ESI 4/24/01 REK
13	5/24/04 S.B.H.
14	5-15-05 H.F.S.
15	S.B.H. 12/31/05
16	



**McDOWELL COUNTY**  
STATE OF WEST VIRGINIA  
Office of Assessor

DISTRICT  
**SANDY RIVER**

**SHEET NO: 164**

Date, Aerial Photography: April, 1961 Date, Map: July, 1962  
Photo No: Scale: 1" = 400'