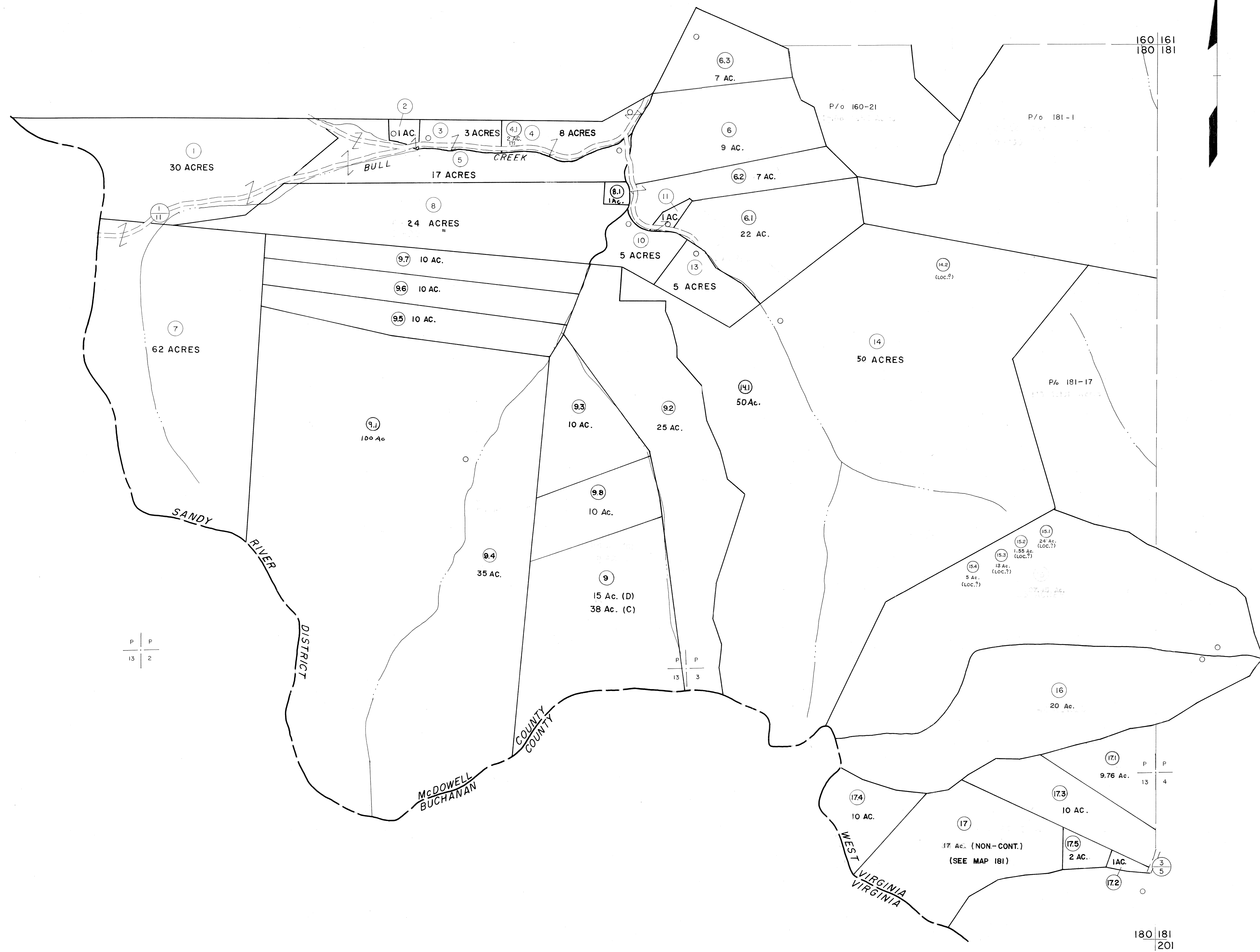


160  
180

160 161  
180 181



P P  
13 2

P P  
13 3

P P  
13 4

180

180 181  
201

**For Tax Purposes Only**

Prepared by  
**MICHAEL BAKER, JR., INC.**  
Consulting Engineers  
Rochester, Pennsylvania

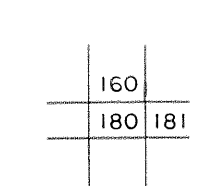
**Legend**

Property line	-----	Original lot line	-----
Edge of pavement or roadway	-----	Deed lot number	(15)
Corporation line	-----	Parcel or index number	(99)
District line	-----	Improvement	o
County line	-----	Railroad	+

**Revisions**

	ES1	4/24/01	REX	
1	4-15-64			17
2	12-4-74	T.G.		18
3	Revised to 7-1-83	JKL		19
4	Revised to 7-1-83	JKL		20
5	Revised to 7-1-83	JKL		21
6	O.G.I.S. 5-15-95	J.E.B.		22
7	O.G.I.S. 12-1-96	J.E.B.		23
8	SLS INC. 6/23/98	J.W.M.		24

**KEY MAP**



**MCDOWELL COUNTY**

STATE OF WEST VIRGINIA

Office of Assessor

**DISTRICT**

**SANDY RIVER**

**SHEET NO: 180**

Date, Aerial Photography: April, 1961  
Photo No: \_\_\_\_\_  
Date, Map: July, 1962  
Scale: 1" = 400'