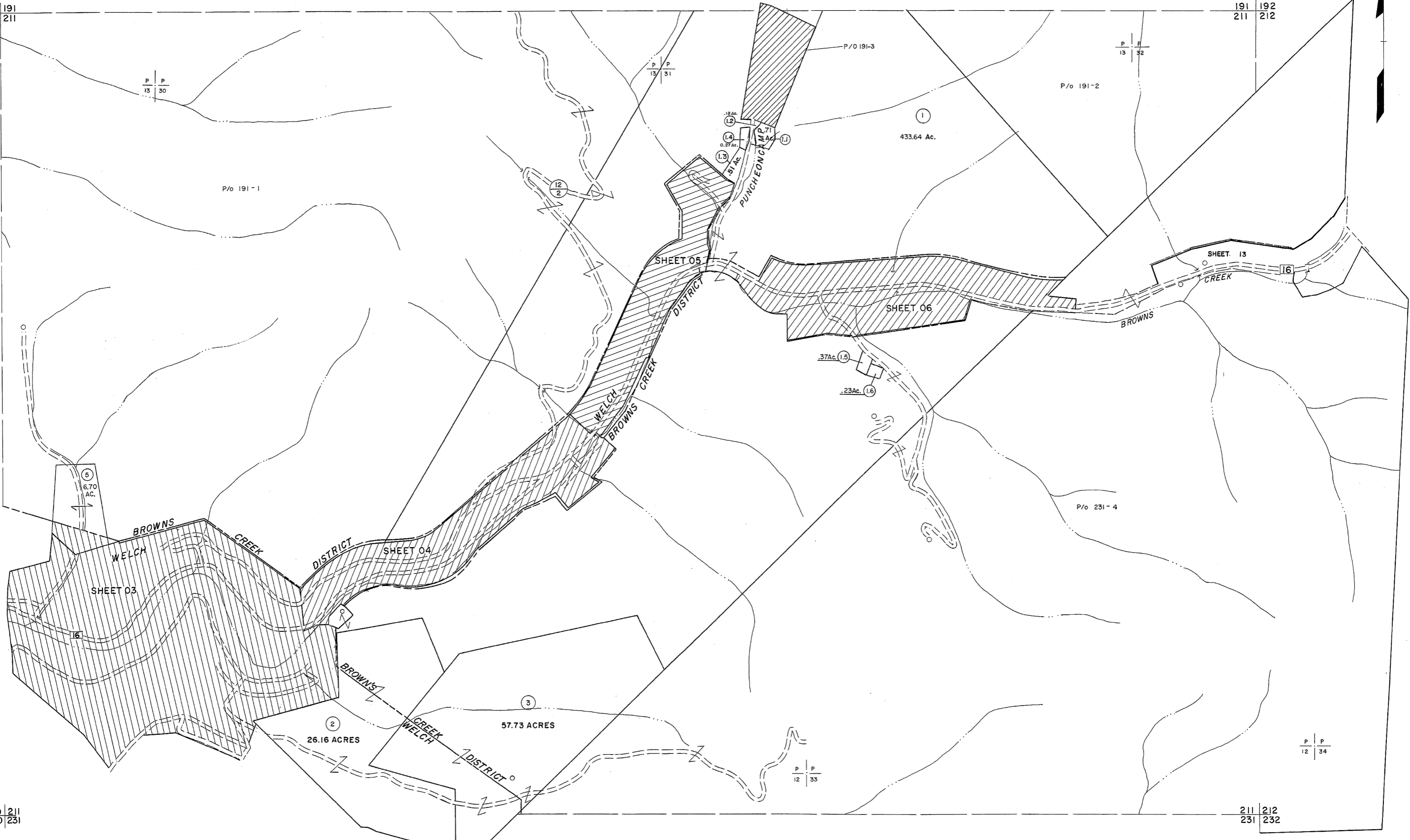


190 | 191
210 | 211

191 | 192
211 | 212

210 | 211
230 | 231

211 | 212
231 | 232



For Tax Purposes Only

Prepared by
MICHAEL BAKER, JR., INC.
Consulting Engineers
Rochester, Pennsylvania

Legend

| | | | |
|-----------------------------|-------|------------------------|-------|
| Property line | ————— | Original lot line | ————— |
| Edge of pavement or roadway | ————— | Deed lot number | (15) |
| Corporation line | ————— | Parcel or index number | (19) |
| District line | ————— | Improvement | o |
| County line | ————— | Railroad | ——+—— |

Revisions

| No. | Description | Date | By |
|-----|-------------------|-------|-------------|
| 1 | 4-15-64 | 9 ESI | 4/24/01 REK |
| 2 | 12-6-74 | 10 | 4/16/12 SBH |
| 3 | Revised to 7-1-88 | 11 | |
| 4 | July 1988 | 12 | |
| 5 | Revised to 7-1-88 | 13 | |
| 6 | O.G.I.S. 5-15-95 | 14 | J.E.B. |
| 7 | SLS INC. 6/25/98 | 15 | JWM |
| 8 | SLS INC. 12/30/98 | 16 | DSW |

KEY MAP



McDOWELL COUNTY
STATE OF WEST VIRGINIA
Office of Assessor

DISTRICT
BROWNS CREEK-WELCH

SHEET NO: 211

Date, Aerial Photography: April, 1961 Date, Map: July, 1962
Photo No: Scale: 1" = 400'