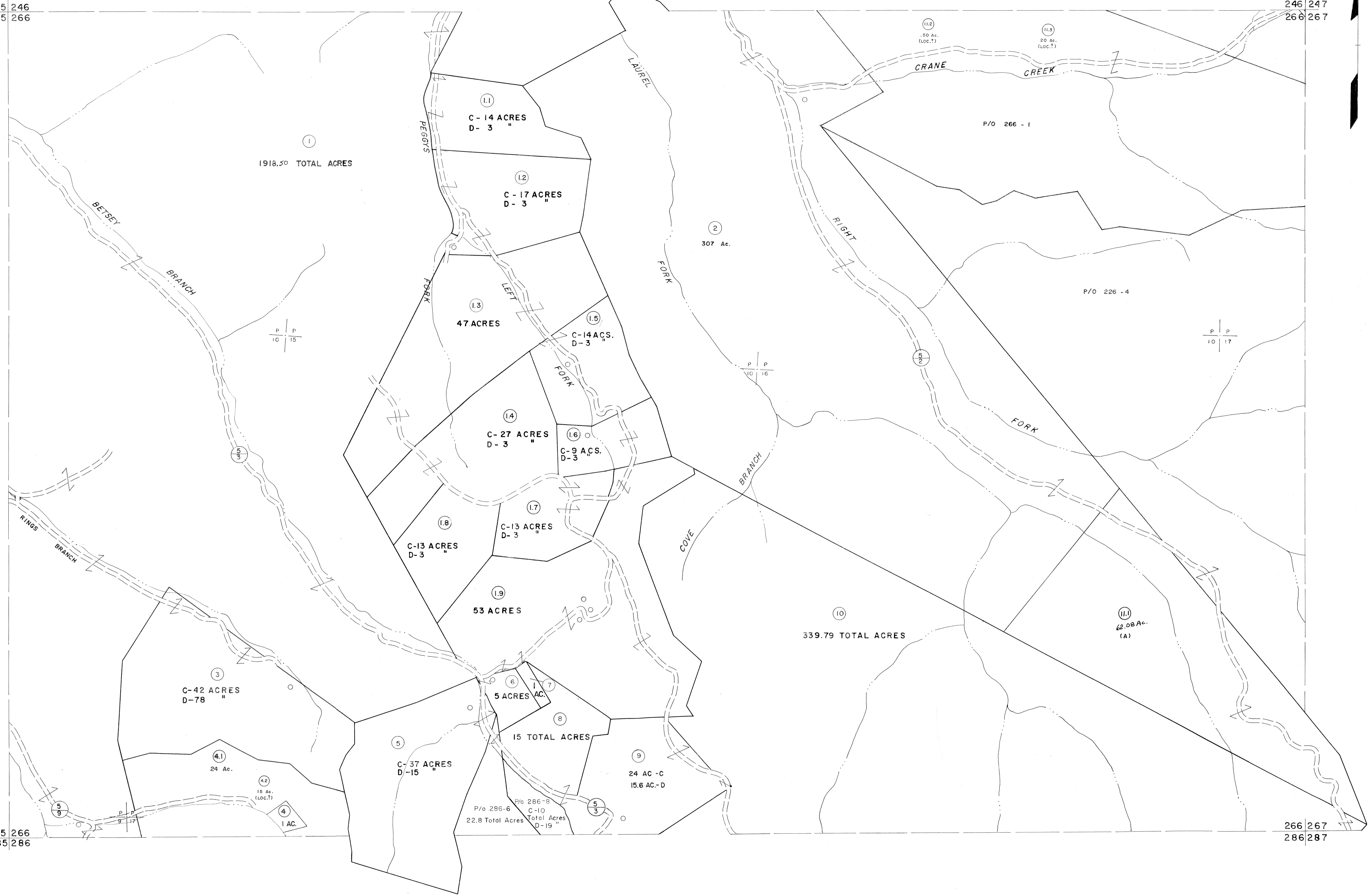


245 246
265 266

246 247
266 267

265 266
285 286

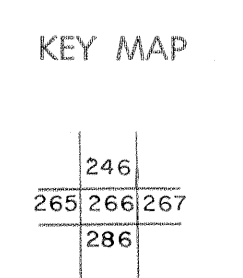
266 267
286 287



For Tax Purposes Only
 Prepared by
MICHAEL BAKER, JR., INC.
 Consulting Engineers
 Rochester, Pennsylvania

| Legend | |
|-----------------------------|------------------------|
| Property line | Original lot line |
| Edge of pavement or roadway | Deed lot number |
| Corporation line | Parcel or index number |
| District line | Improvement |
| County line | Railroad |

| Revisions | |
|-----------|--------------------------|
| 1 | 4-15-64 |
| 2 | 12-10-74 T.G. |
| 3 | Revised to 7-1-83 J.E.B. |
| 4 | 7-1-83 J.E.B. |
| 5 | 0.6.15 5-15-95 J.E.B. |
| 6 | |
| 7 | |
| 8 | |



MCDOWELL COUNTY
 STATE OF WEST VIRGINIA
 Office of Assessor

DISTRICT
SANDY RIVER
 SHEET NO: 266
 Date, Aerial Photography: April, 1961 Date, Map: July, 1962
 Photo No: Scale: 1" = 400'