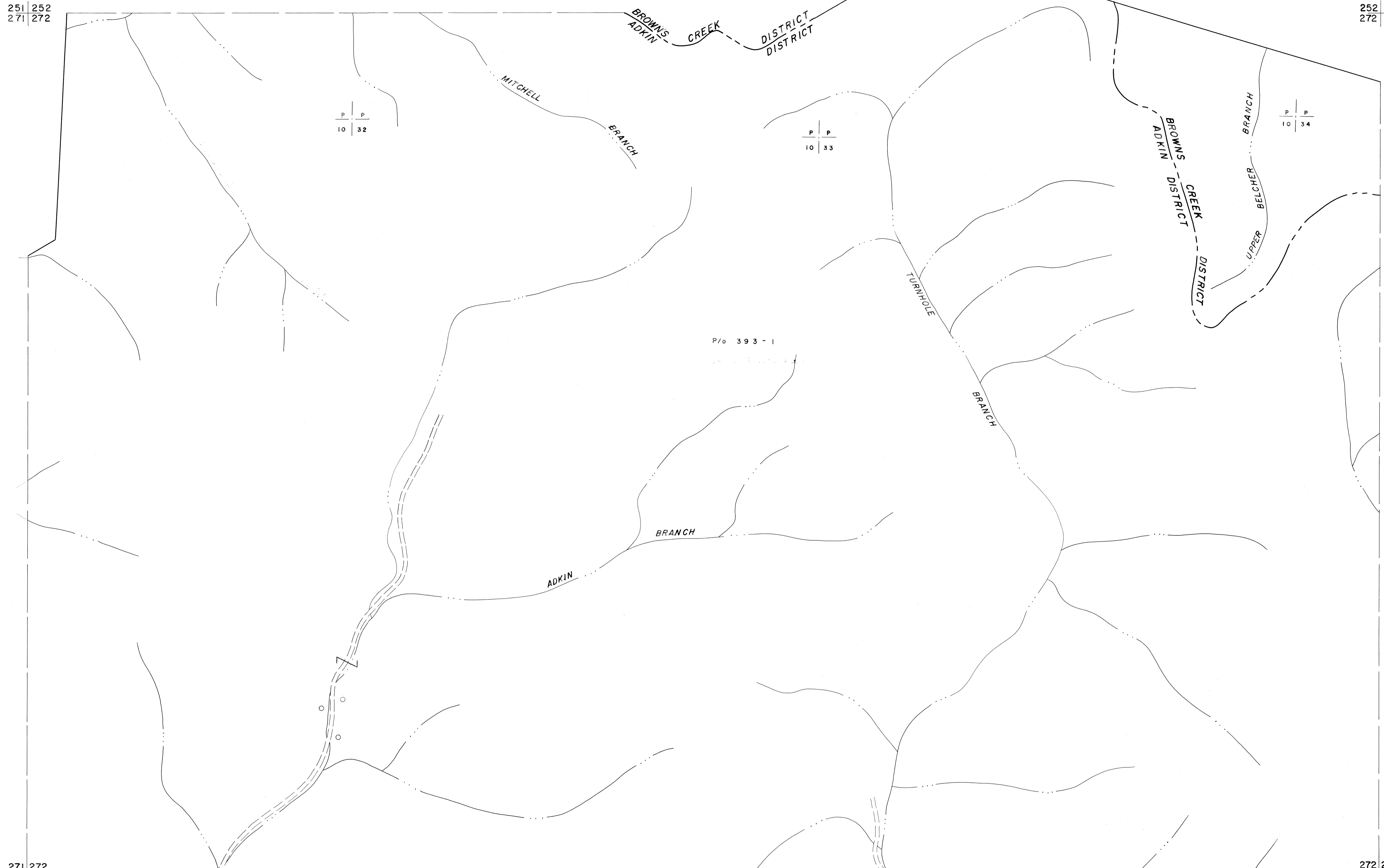


251 252
271 272

252 253
272 273

271 272
291 292

272 273
292 293



For Tax Purposes Only

Prepared by
MICHAEL BAKER, JR., INC.
Consulting Engineers
Rochester, Pennsylvania

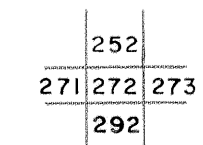
Legend

Property line	—	Original lot line	- - - - -
Edge of pavement or roadway	— · — · —	Dead lot number	(15)
Corporation line	— · — · —	Parcel or index number	(20)
District line	- - - - -	Improvement	○
County line	— · — · —	Railroad	— + — + —

Revisions

1	4-15-64	9	17
2	7-1-63	10	18
3	July 1965	11	19
4	S.L. INC. 6/26/68 DSW	12	20
5		13	21
6		14	22
7		15	23
8		16	24

KEY MAP



McDOWELL COUNTY
STATE OF WEST VIRGINIA
Office of Assessor

DISTRICT

ADKIN

SHEET NO: 272

Date, Aerial Photography: April, 1961 Date, Map: July, 1962
Photo No: Scale: 1" = 400'