

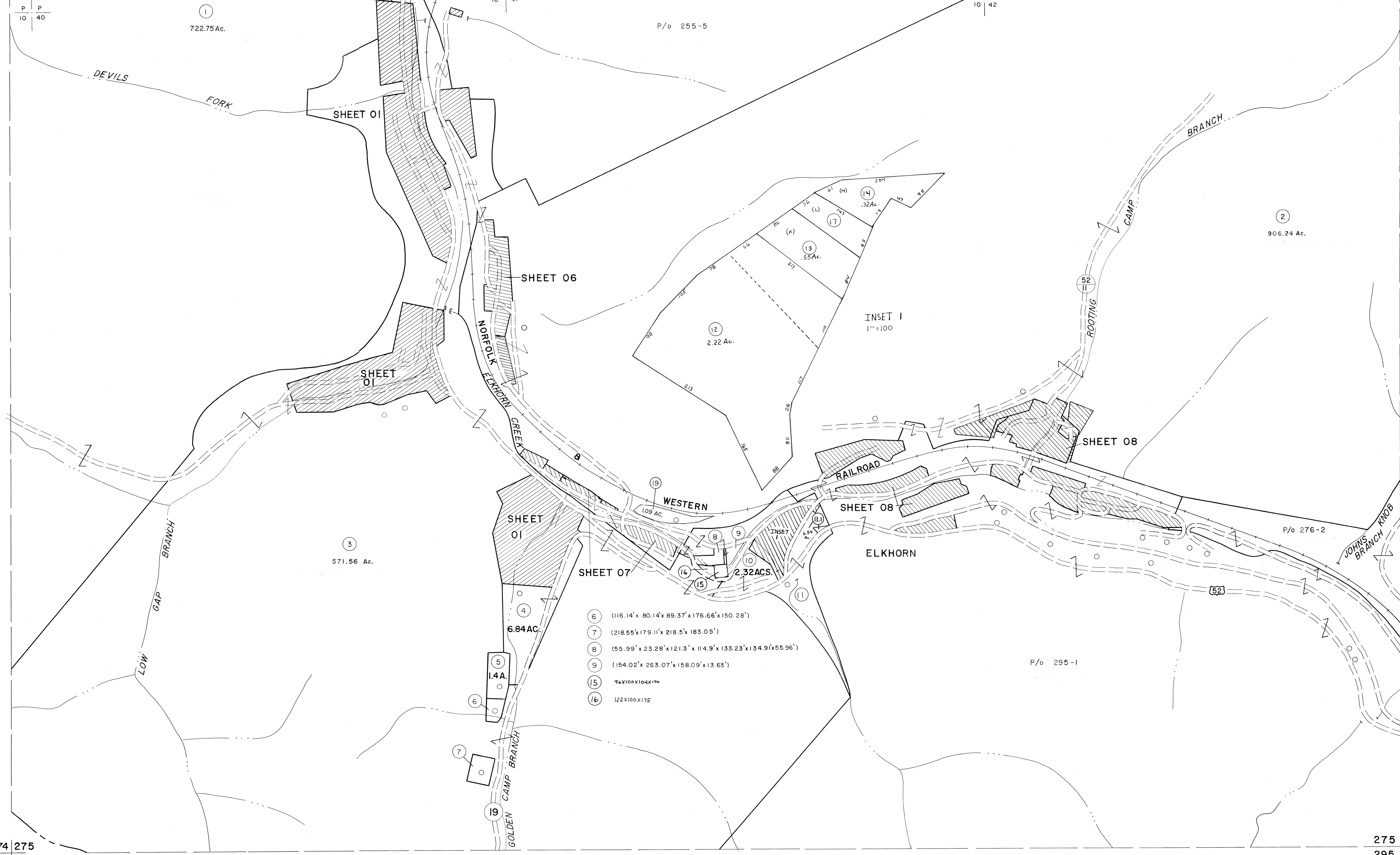
254 255  
274 275

255 256  
275 276

P P  
10 40

P P  
10 41

P P  
10 42



- ⑥ (116.14' x 80.14' x 89.37' x 176.66' x 150.28')
- ⑦ (218.55' x 179.11' x 218.5' x 183.05')
- ⑧ (55.99' x 23.28' x 121.3' x 114.9' x 133.23' x 134.9' x 55.96')
- ⑨ (154.02' x 263.07' x 158.09' x 13.63')
- ⑮ 96x100x104x106
- ⑯ 122x100x175

274 275  
294 295

275 276  
295 296

For Tax Purposes Only

Prepared by  
MICHAEL BAKER, JR., INC.  
Consulting Engineers  
Rochester, Pennsylvania

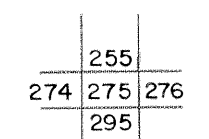
Legend

Property line	———	Original lot line	-----
Edge of pavement or roadway	-----	Dead lot number	(15)
Corporation line	-----	Parcel or index number	(99)
District line	-----	Improvement	O
County line	-----	Railroad	———

Revisions

1	4-15-64	9	ESI	12/4/02	REK	17
2	12-10-74	7: G.	10	5/23/04	SBH	18
3	REV. TO 7-1-83	NCS	11	8/27/06	SBH	19
4	July 1925	722	12			20
5	O.G.I.S 5-15-95	J.E.B	13			21
6	O.G.I.S 12-1-96	J.E.B	14			22
7	BLS INC. 6/26/98	JWM	15			23
8			16			24

KEY MAP



**McDOWELL COUNTY**  
STATE OF WEST VIRGINIA  
Office of Assessor

DISTRICT

**ELKHORN**

**SHEET NO: 275**

Date, Aerial Photography: April, 1961  
Photo No: Date, Map: July, 1962  
Scale: 1" = 400'