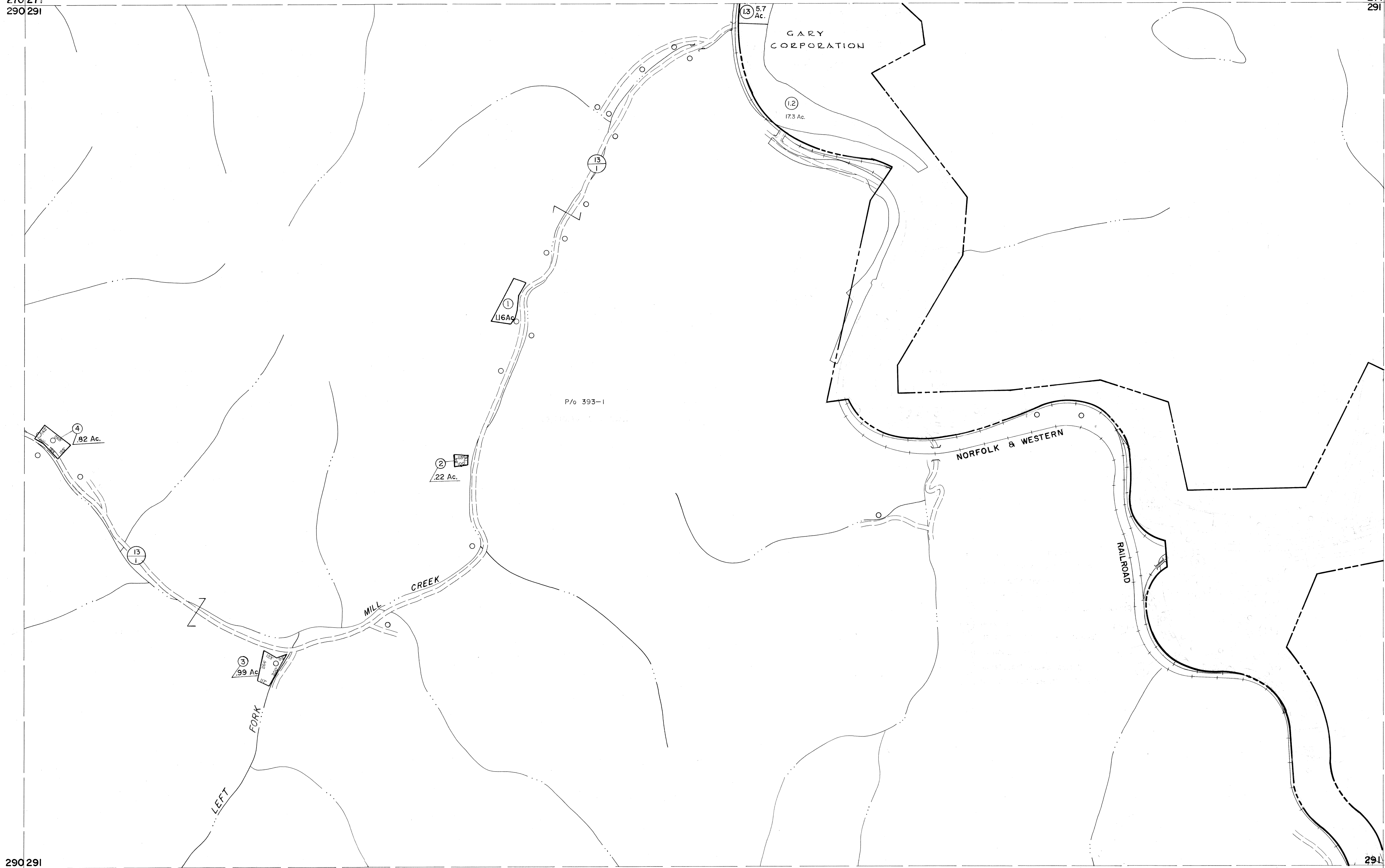


270|271  
290|291

271|272  
291|292



290|291  
310|311

291|292  
311|312

For Tax Purposes Only

Prepared by  
MICHAEL BAKER, JR., INC.  
Consulting Engineers  
Rochester, Pennsylvania

Legend

Property line	———	Original lot line	———
Edge of pavement or roadway	———	Deed lot number	(15)
Corporation line	———	Parcel or index number	(99)
District line	———	Improvement	○
County line	———	Railroad	—+—

Revisions

1	4-15-64	9	17
2	4-18-72 T.D.M.	10	18
3	7-1-83 L.E.S.	11	19
4	11-19-83 J.W.M.	12	20
5	SLS INC. 6/26/98 J.W.M.	13	21
6	SLS INC. 1/4/99 D.S.W.	14	22
7	5/23/04 S & H	15	23
8	5-15-05 H & S	16	24

KEY MAP



McDOWELL COUNTY  
STATE OF WEST VIRGINIA  
Office of Assessor

DISTRICT

ADKIN

SHEET NO: 291

Date, Aerial Photography: April, 1961 Date, Map: July, 1962  
Photo No: Scale: 1" = 400'