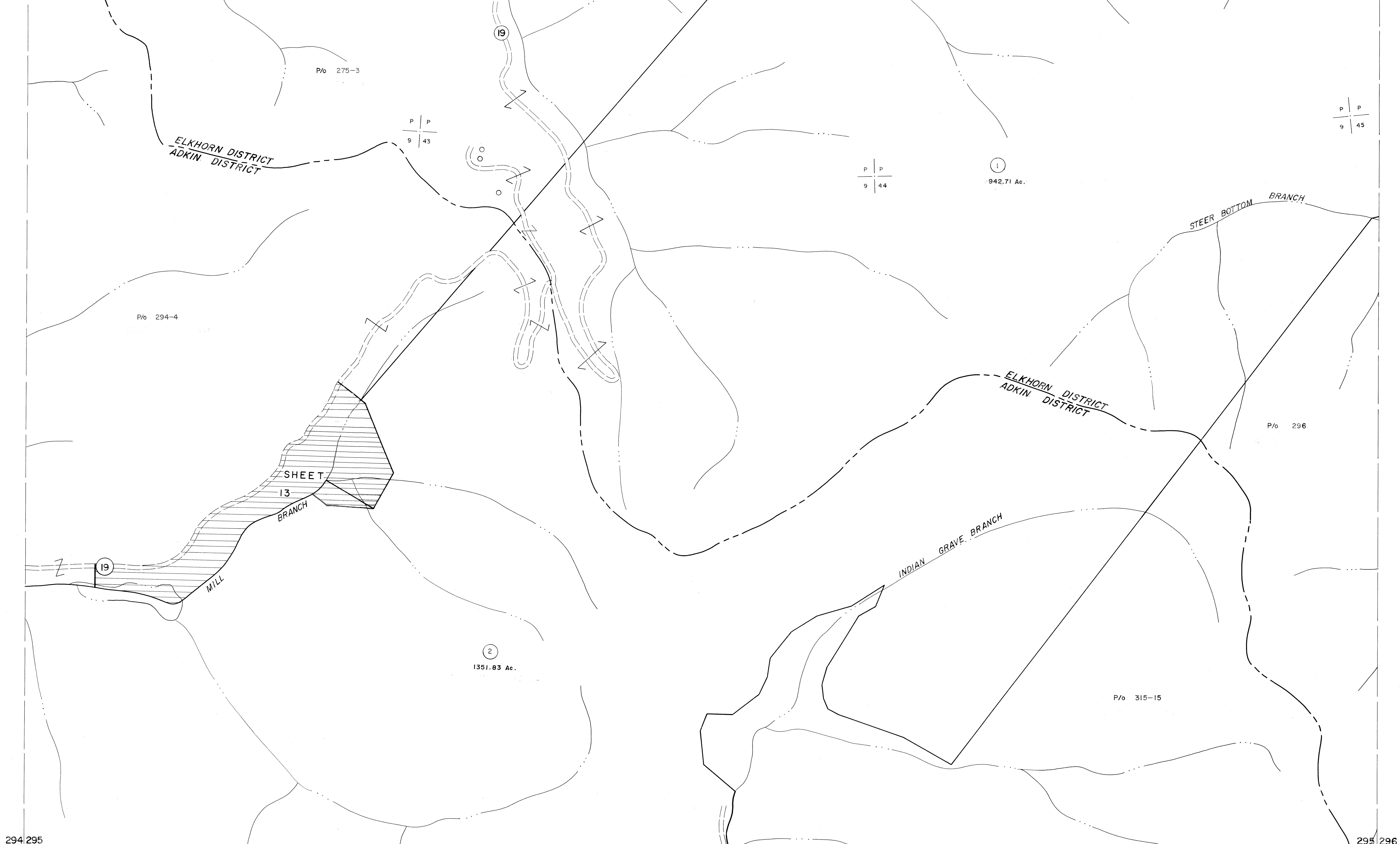


274 275  
294 295

275 276  
295 296



294 295  
314 315

295 296  
315 316

**For Tax Purposes Only**

Prepared by  
**MICHAEL BAKER, JR., INC.**  
Consulting Engineers  
Rochester, Pennsylvania

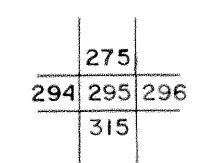
**Legend**

Property line	—	Original lot line	---
Edge of pavement or roadway	—	Deed lot number	(15)
Corporation line	---	Parcel or index number	(99)
District line	---	Improvement	o
County line	---	Railroad	—+—

**Revisions**

1	4-15-64	9	17
2	7-1-63	10	18
3	7-1-63	11	19
4	6.6.1.S 5-15-95 J.E.B	12	20
5	SLS INC. 6/26/98 J.W.M	13	21
6		14	22
7		15	23
8		16	24

**KEY MAP**



**McDOWELL COUNTY**  
STATE OF WEST VIRGINIA  
Office of Assessor

DISTRICT **ADKIN ELKHORN**

**SHEET NO: 295**

Date, Aerial Photography: April, 1961 Date, Map: July, 1962  
Photo No: Scale: 1" = 400'