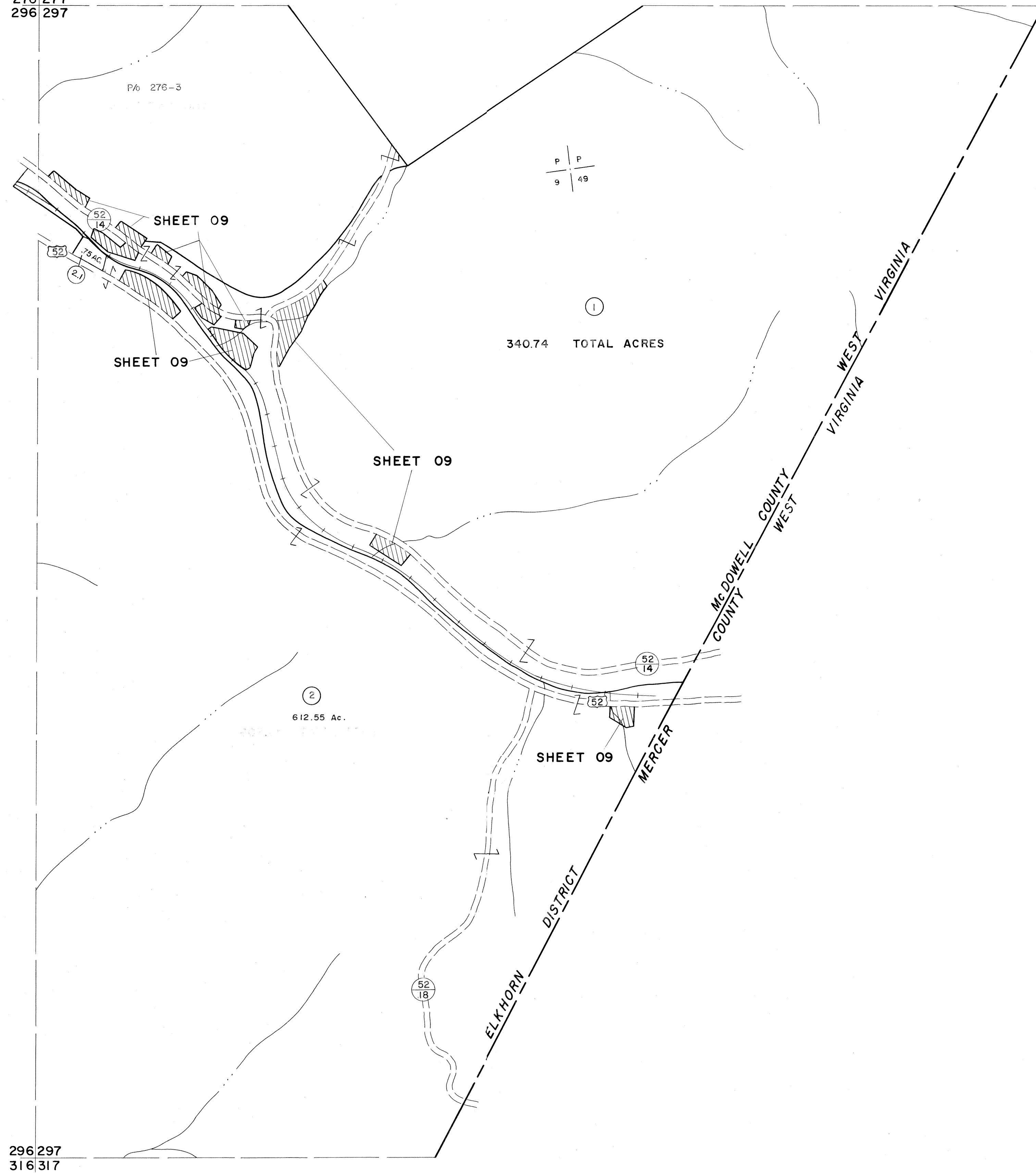


276 277
296 297

277
297



296 297
316 317

297
317

For Tax Purposes Only

Prepared by
MICHAEL BAKER, JR., INC.
Consulting Engineers
Rochester, Pennsylvania

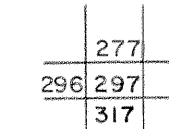
Legend

| | | | |
|-----------------------------|-----------|------------------------|-------|
| Property line | ————— | Original lot line | ----- |
| Edge of pavement or roadway | - - - - - | Deed lot number | (15) |
| Corporation line | | Parcel or index number | (99) |
| District line | ----- | Improvement | O |
| County line | ----- | Railroad | +++++ |

Revisions

| | | | |
|---|------------------|--------|----|
| 1 | 4-15-64 | 9 | 17 |
| 2 | REV. TO 7-1-83 | NCS | 18 |
| 3 | July 1985 | J.E.B. | 19 |
| 4 | K.G.I.S. 12-1-96 | J.E.B. | 20 |
| 5 | | | 21 |
| 6 | | | 22 |
| 7 | | | 23 |
| 8 | | | 24 |

KEY MAP



McDOWELL COUNTY
STATE OF WEST VIRGINIA
Office of Assessor

DISTRICT

ELKHORN

SHEET NO: 297

Date, Aerial Photography: APRIL, 1961 Date, Map: JULY, 1961
Photo No: Scale: 1" = 400'