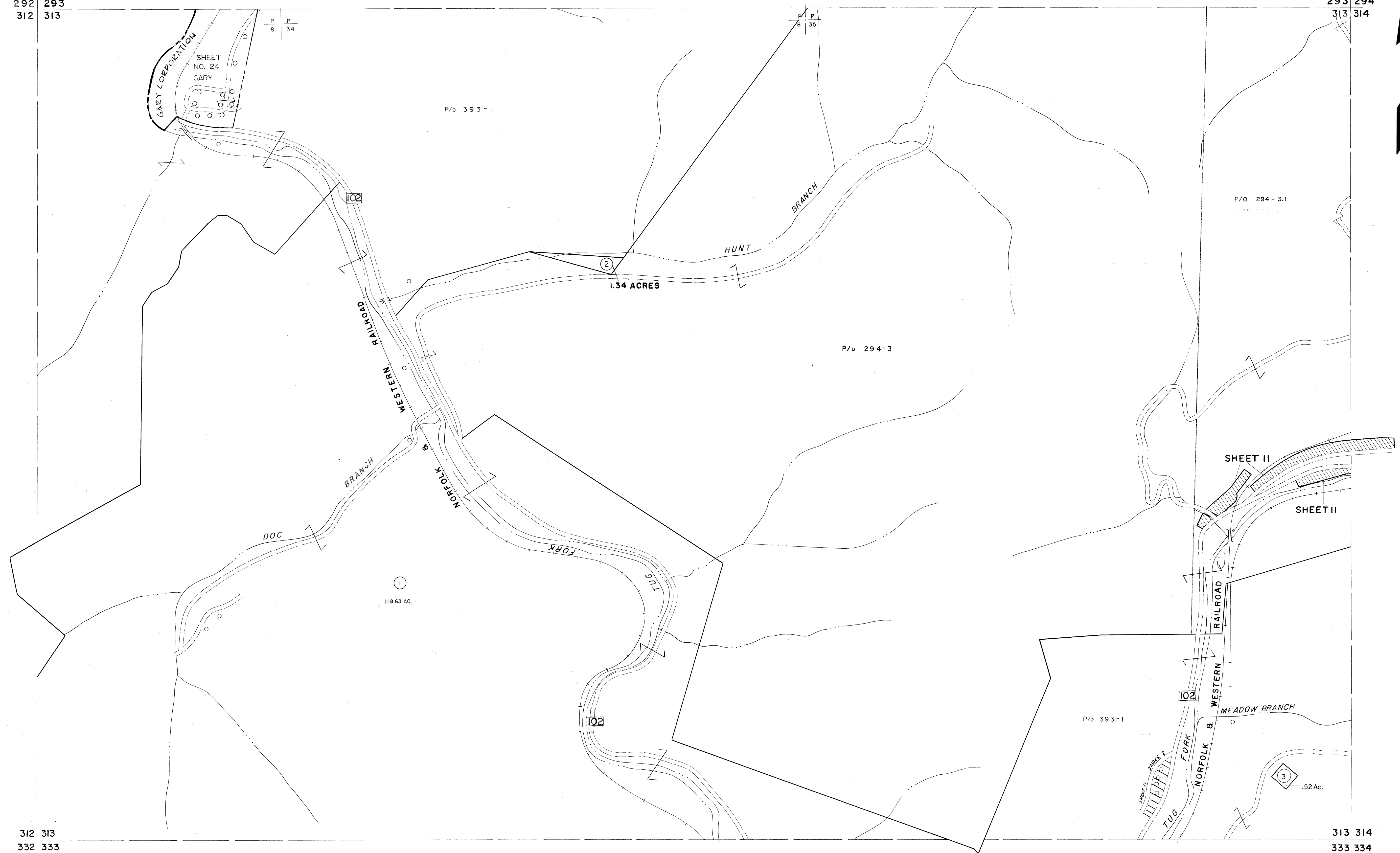


292 293  
312 313

293 294  
313 314



312 313  
332 333

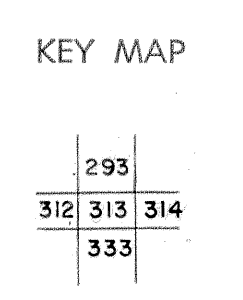
313 314  
333 334

For Tax Purposes Only

Prepared by  
**MICHAEL BAKER, JR., INC.**  
 Consulting Engineers  
 Rochester, Pennsylvania

Legend	
Property line	—
Edge of pavement or roadway	—
Corporation line	—
District line	—
County line	—
Original lot line	—
Deed lot number	(15)
Parcel or index number	(29)
Improvement	o
Railroad	—

Revisions						
1	4-15-64	9	ESI	12/5/02	REK	17
2	4-19-72 J.M.	10				18
3	12-5-74 DAE	11				19
4	7-1-83 L.E.S.	12				20
5	10-1-85 J.E.B.	13				21
6	Q.G.I.S. 5-15-95 J.E.B.	14				22
7	Q.G.I.S. 12-1-96 J.E.B.	15				23
8	SLS INC. 6/26/98 J.W.M.	16				24



**McDOWELL COUNTY**  
 STATE OF WEST VIRGINIA  
 Office of Assessor

DISTRICT **ADKIN**

**SHEET NO: 313**

Date, Aerial Photography: April, 1961 Date, Map: July, 1962  
 Photo No: Scale: 1" = 400'