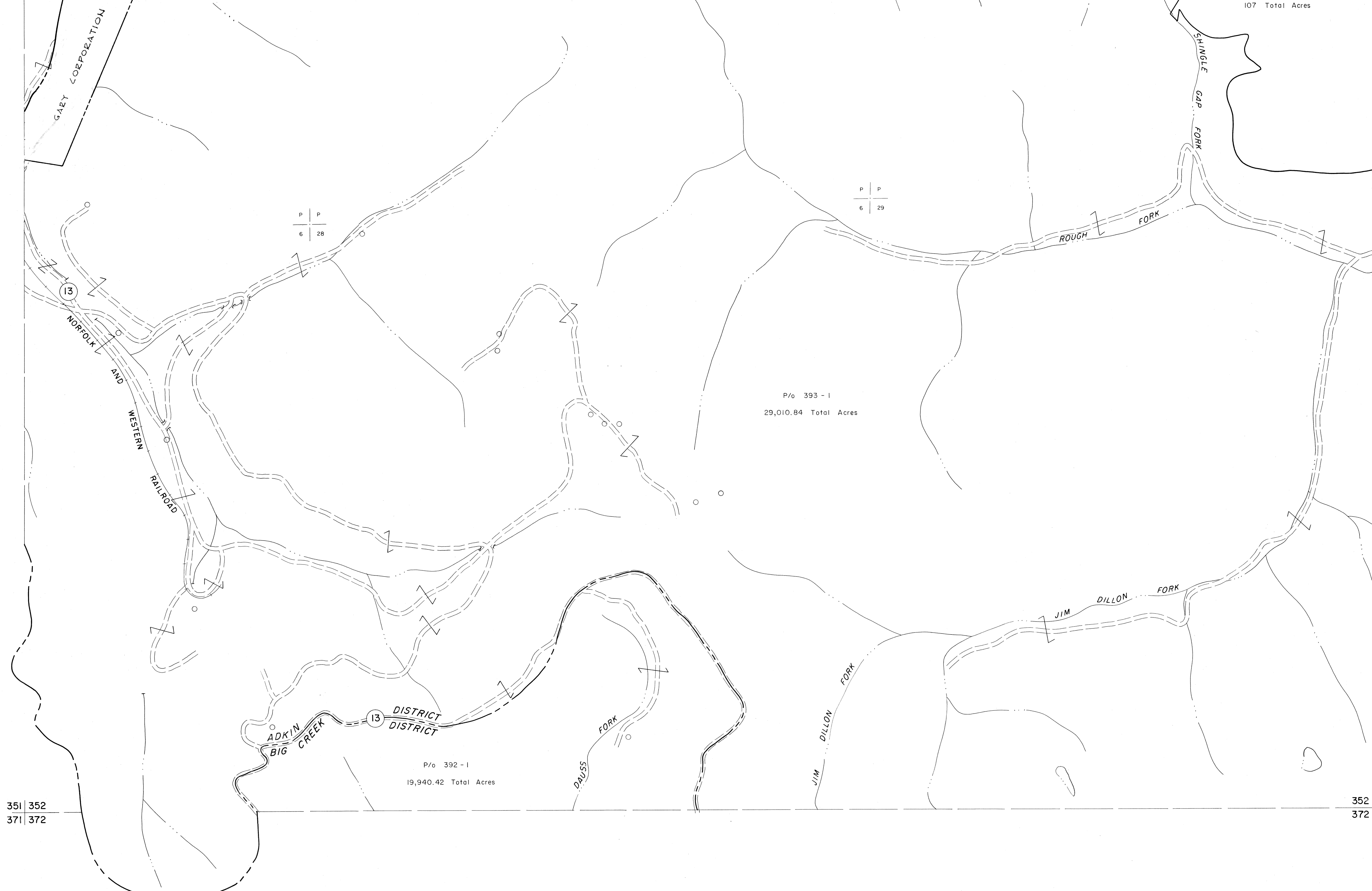


331 332
351 352

332 333
352 353

351 352
371 372

352 353
372 373

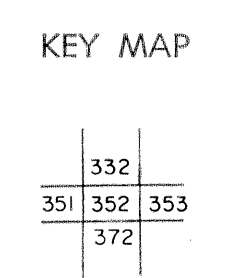


For Tax Purposes Only

Prepared by
MICHAEL BAKER, JR., INC.
Consulting Engineers
Rochester, Pennsylvania

Legend	
Property line	—
Edge of pavement or roadway	- - - -
Corporation line	- · - · -
District line	- - - - -
County line	- - - - -
Original lot line	- · - · -
Deed lot number	(15)
Parcel or index number	(29)
Improvement	○
Railroad	—+—+—+—

Revisions			
1	4-15-64	9	17
2	4-19-72 T.J.M.	10	18
3	7/6/75	11	19
4		12	20
5		13	21
6		14	22
7		15	23
8		16	24



McDOWELL COUNTY
STATE OF WEST VIRGINIA
Office of Assessor

DISTRICT ADKIN

SHEET NO: 352

Date, Aerial Photography: April, 1961 Date, Map: July, 1962
Photo No: Scale: 1" = 400'