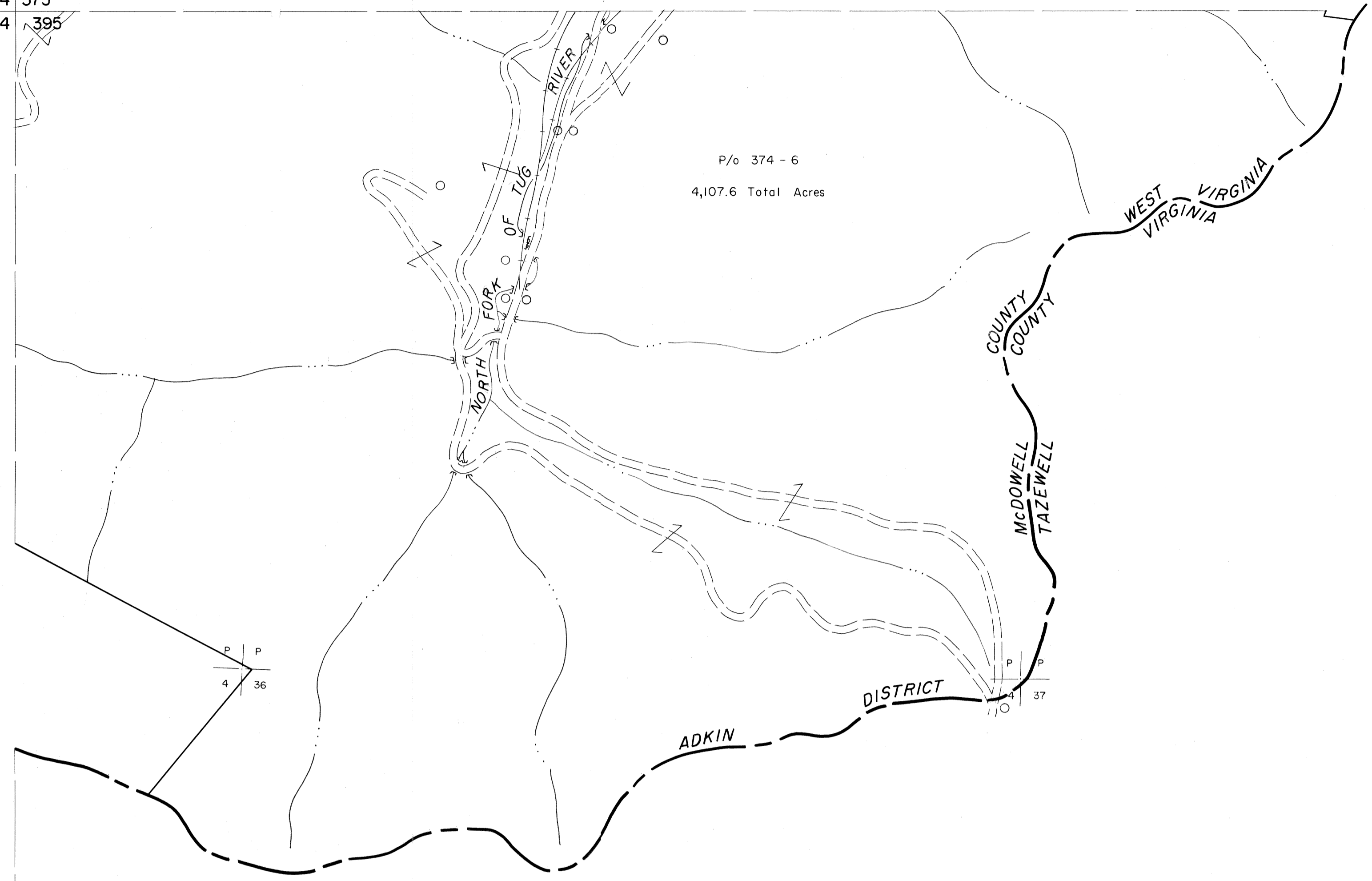


374 375  
394 395

375  
395



P P  
4 36

P P  
4 38

394 395  
414

395

**For Tax Purposes Only**

Prepared by  
**MICHAEL BAKER, JR., INC.**  
Consulting Engineers  
Rochester, Pennsylvania

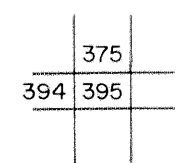
**Legend**

|                             |       |                        |         |
|-----------------------------|-------|------------------------|---------|
| Property line               | ————— | Original lot line      | -----   |
| Edge of pavement or roadway | ----- | Deed lot number        | (15)    |
| Corporation line            | ----- | Parcel or index number | (29)    |
| District line               | ----- | Improvement            | o       |
| County line                 | ----- | Railroad               | —+—+—+— |

**Revisions**

|   |                      |    |    |
|---|----------------------|----|----|
| 1 | 4-15-64              | 9  | 17 |
| 2 | To JULY 1, 1983 C.P. | 10 | 18 |
| 3 |                      | 11 | 19 |
| 4 |                      | 12 | 20 |
| 5 |                      | 13 | 21 |
| 6 |                      | 14 | 22 |
| 7 |                      | 15 | 23 |
| 8 |                      | 16 | 24 |

**KEY MAP**



**McDOWELL COUNTY**  
STATE OF WEST VIRGINIA  
Office of Assessor

**DISTRICT**

**ADKIN**

**SHEET NO: 395**

Date, Aerial Photography: April, 1961    Date, Map: July, 1962  
Photo No:    Scale: 1" = 400'