

209 210
229 230

210 211
230 231

P P
12 29

P/O 209-2

P/O 210-9

P/O 210-10

310 TOTAL ACRES

274.77 TOTAL ACRES

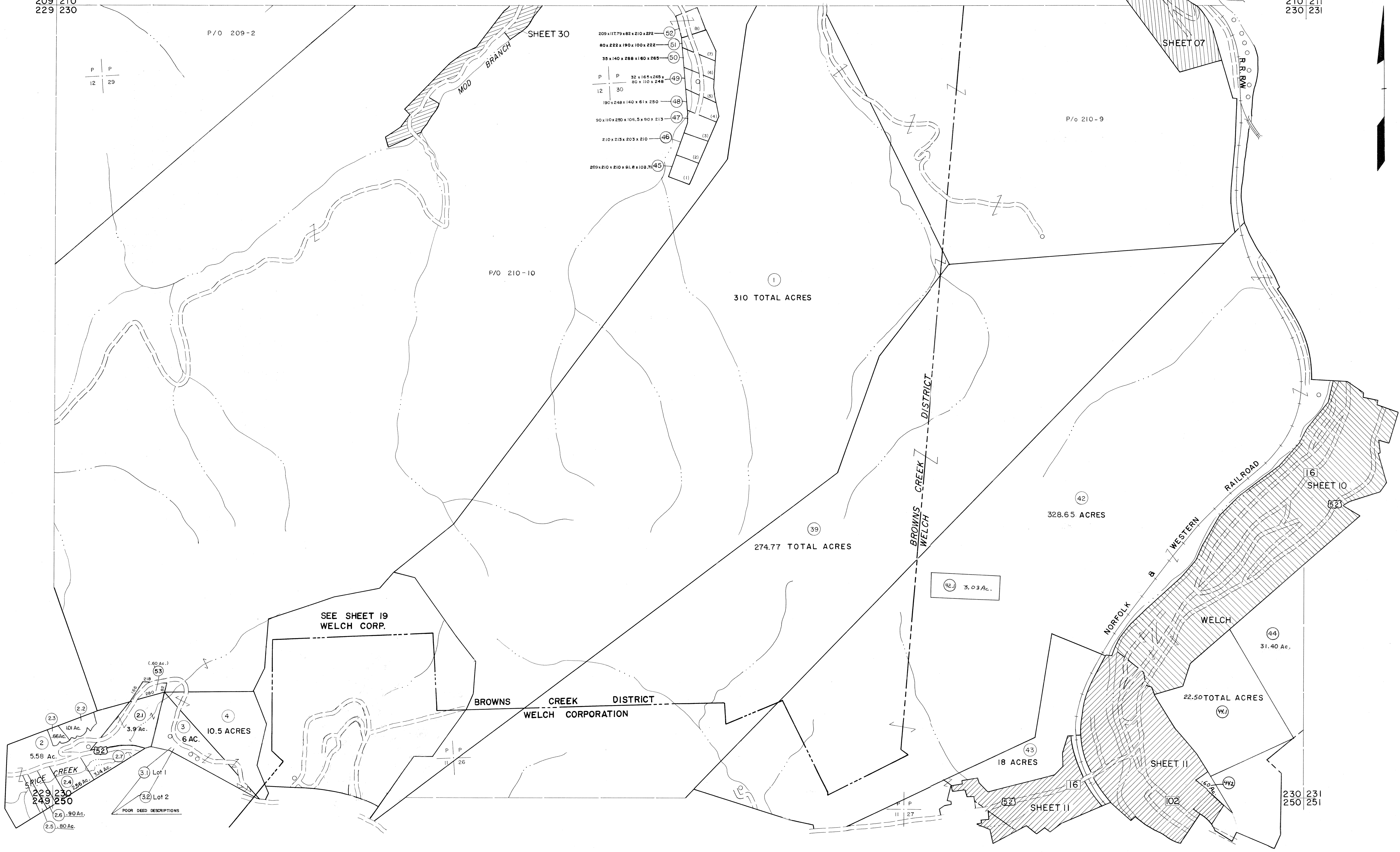
328.65 ACRES

31.40 Ac.

22.50 TOTAL ACRES

18 ACRES

230 231
250 251



209x117.79x82x210x272	52
80x222x190x100x222	51
35x140x288x160x265	50
P P 32x18x125x 80x110x248	49
12 30	
190x248x140x61x250	48
90x110x290x106.5x90x213	47
210x215x203x210	46
209x210x210x81.8x108.7	45

SEE SHEET 19
WELCH CORP.

BROWNS CREEK DISTRICT
WELCH CORPORATION

For Tax Purposes Only
Prepared by
MICHAEL BAKER, JR., INC.
Consulting Engineers
Rochester, Pennsylvania

Legend	
Property line	—
Edge of pavement or roadway	—
Corporation line	—
District line	—
County line	—
Original lot line	—
Deed lot number	(15)
Parcel or index number	(99)
Improvement	○
Railroad	—

Revisions	
1 4-15-64	9
2 12-9-74	10
3 Revised 7-1-85	11
4 July 1985	12
5 Revised 7-1-88	13
6 O.G.I.S 5-15-95 J.E.B	14
7 ESI 4/26/01 REK	15
8	16
	17
	18
	19
	20
	21
	22
	23
	24

KEY MAP
210
229 230 231
250

McDOWELL COUNTY
STATE OF WEST VIRGINIA
Office of Assessor

DISTRICT BROWNS CREEK
WELCH
SHEET NO: 230
Date, Aerial Photography: April, 1961
Photo No:
Date, Map: July, 1962
Scale: 1" = 400'