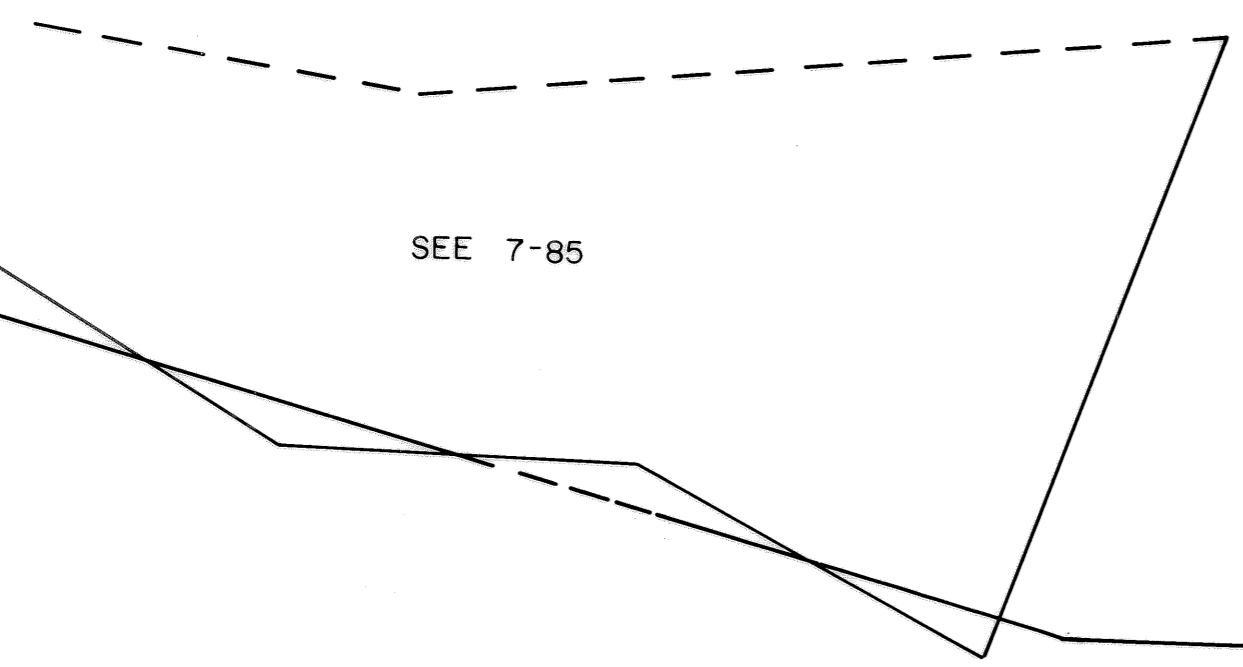


SEE 5-279

P/O  
345 - 1



SEE 7-85

BRADSHAW SANDY RIVER CORP. DIST.



**For Tax Purposes Only**

Prepared by  
LOCAL GOVERNMENT RELATIONS DIV.  
STATE TAX COMMISSIONER  
CHARLESTON, W.VA.

**LEGEND**

Property line	—————	Original lot line	-----
Edge of pavement or roadway	- - - - -	Deed lot number	(15)
Corporation line	- - - - -	Parcel or index number	⊙
District line	- - - - -	Improvement	○
County line	- - - - -	Railroad	—+—

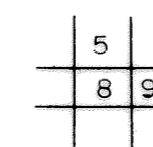
**REVISIONS**

1	4/28/80	VEM
2	To JULY 1, 1983 C.P.	
3	Revised to 7-1-85	
4		
5		
6		
7		
8		

**RESTRICTION**

All tax maps created under the provisions of reappraisal legislation are the property of the State of West Virginia and the reproduction, copying, distribution or sale of such tax maps or any copies thereof without the written permission of the State Tax Commissioner is prohibited by law.

**KEY MAP**



**McDOWELL COUNTY**  
STATE OF WEST VIRGINIA

Office Of Assessor

**BRADSHAW CORP.**

MAP NO. 8

Date, Aerial Photography:  
Photo No:

Date, Map: 3-26-80  
Scale: 1" = 100'  
K. M.