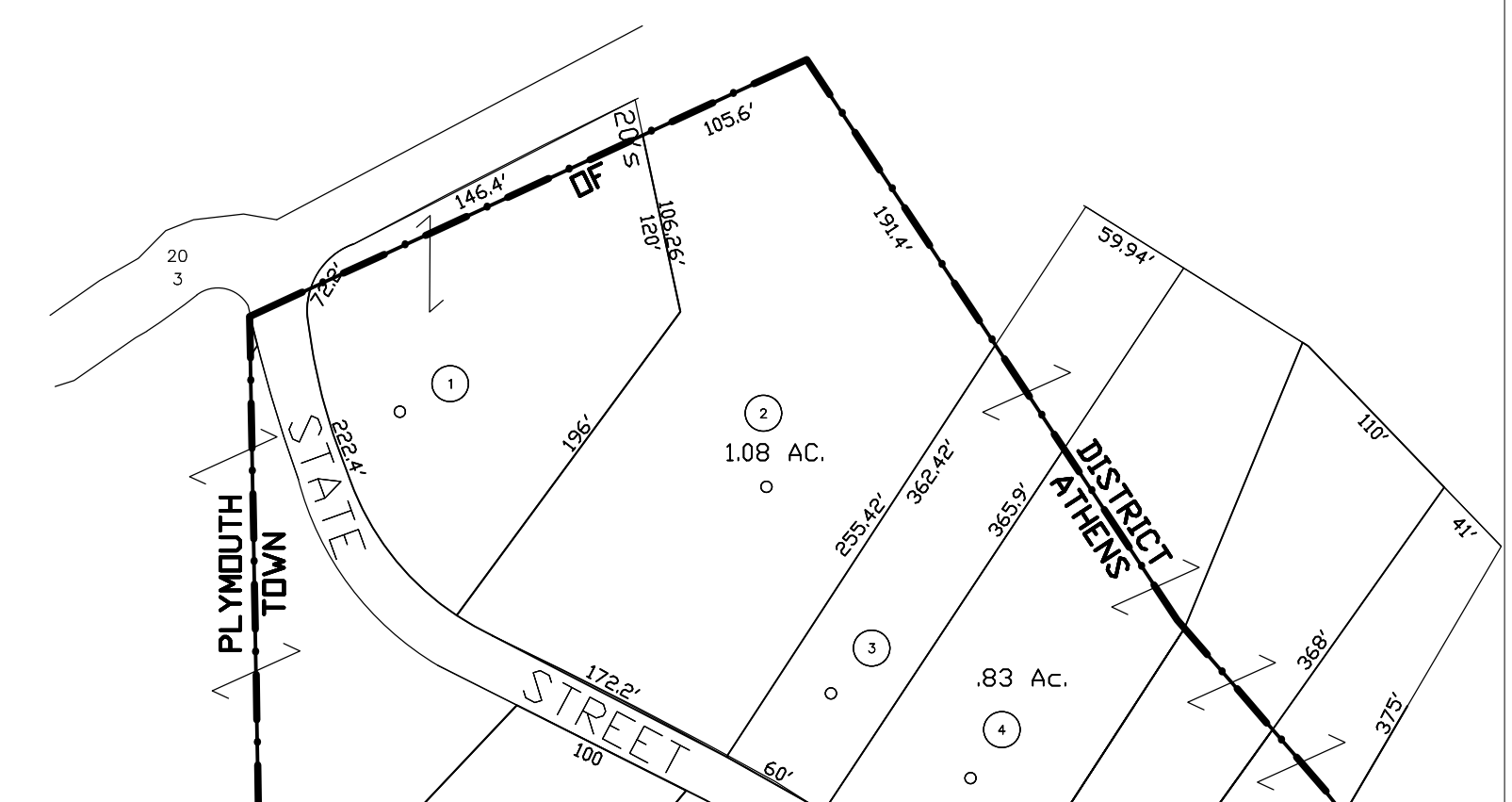


SEE PLYMOUTH 17



FOR TAX PURPOSES ONLY  
 Prepared by  
 Mercer County Assessor's Office  
 Princeton, West Virginia

This tax map was compiled for the purpose of taxation from available record evidence and has not been field verified. This map is not a valid survey plat and the data on the map does not imply any official status to such data. The State of West Virginia and the Mercer County Assessor's Office assume no liability that might result from the use of this map.

Legend	
Property line	—————
Original lot line	.....
Corporation line	-----
District line	- - - - -
County line	—————
Deed lot number (in parenthesis)	(15)
Parcel or index number (in circle)	Ⓣ
Improvement	○
Edge of pavement	-----
Railroad	+++++
Date of Last Revision: 11-03-1999	

Map Key		
NW	N	NE
W	X	E
SW	2	3

MERCER COUNTY  
 WEST VIRGINIA  
 Office of Assessor

ATHENS	
City - Town - District:	01
Map No:	01
Scale: 1" = 100'	Date Printed: _____