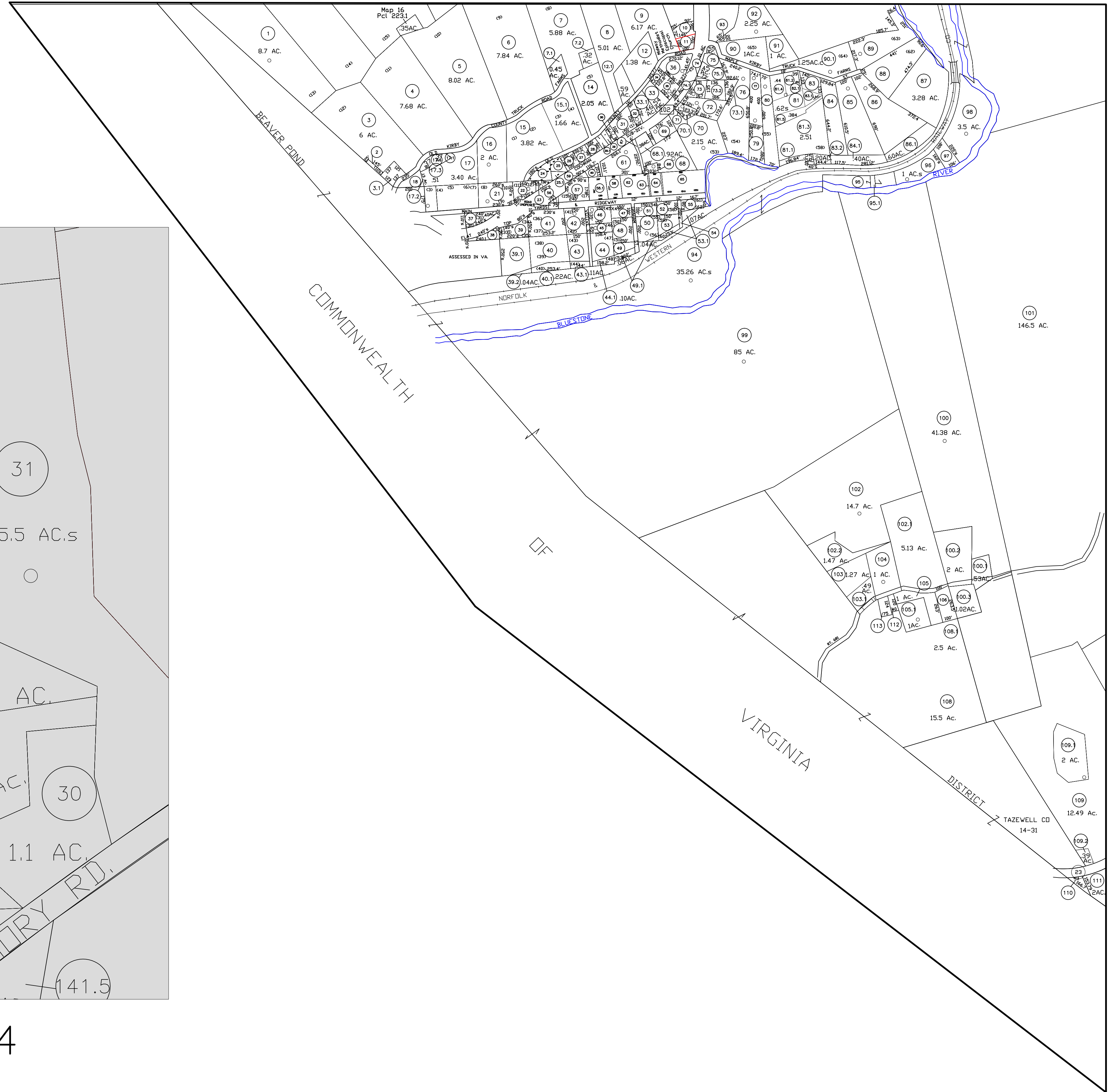


Inset From Map 24

1"=100'



FOR TAX PURPOSES ONLY  
Prepared by  
Mercer County Assessor's Office  
Princeton, West Virginia

This tax map was compiled for the purpose of taxation from available record evidence and has not been field verified. This map is not a valid survey plat and the data on the map does not imply any official status to such data. The State of West Virginia and the Mercer County Assessor's Office assume no liability that might result from the use of this map.

Legend	
Property line	Deed lot number (in parenthesis) (15)
Original lot line	Parcel or index number (in circle) (99)
Corporation line	Improvement
District line	Edge of pavement
County line	Railroad
Date of Last Revision: 07-01-2010	

Map Key		
NW	16	17
W	X	24
SW	S	30

MERCER COUNTY  
WEST VIRGINIA  
Office of Assessor

BEAVER POND  
City - Town - District:  
Map No: 23  
Scale: 1"=400'  
Date Printed: