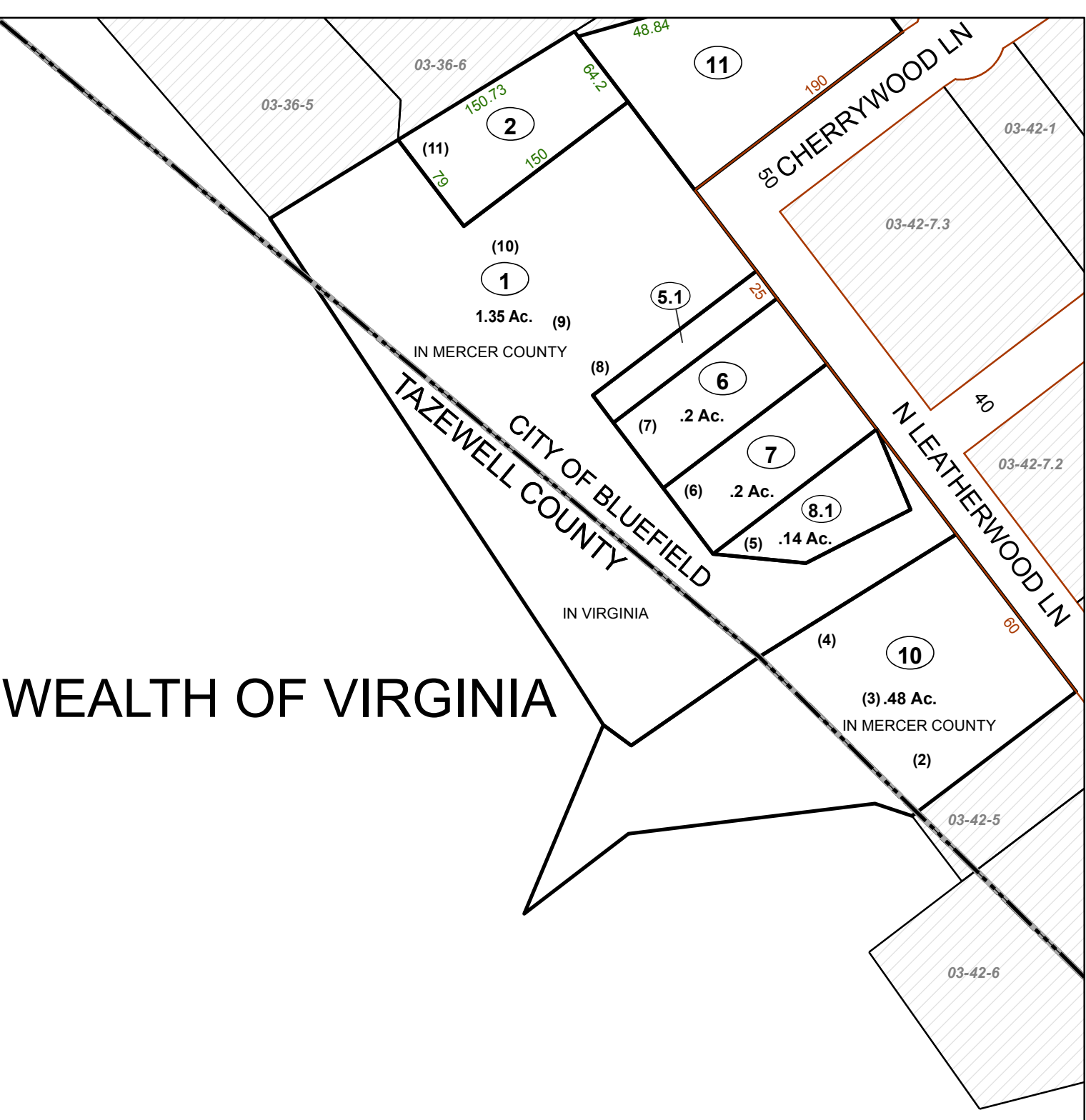


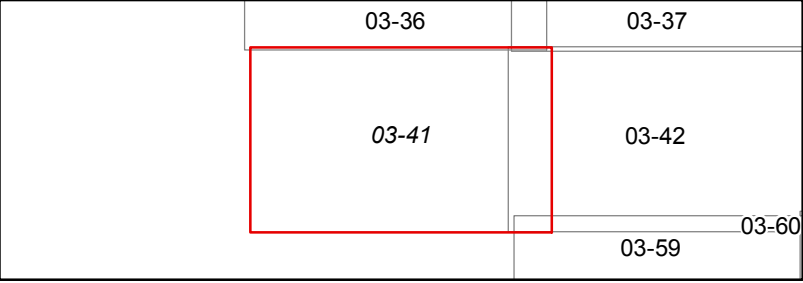
COMMONWEALTH OF VIRGINIA



FOR TAX PURPOSES ONLY
Prepared By
Mercer County Assessor's Office
Princeton, West Virginia

This tax map was compiled for the purpose of taxation from available record evidence and has not been field verified. This map is not a valid survey plat and the data on the map does not imply any official status to such data. The State of West Virginia and the Mercer County Assessor's Office assume no liability that might result from the use of this map.

Legend			
Property Line	Original Lot Line	Lot Number	
Road Right of Way	Parcel Number	Water	
Corporation Line	Water	Railroad	
District Line			
County Line			



MERCER COUNTY
WEST VIRGINIA
Office of Assessor



BLUEFIELD
Map: 41
Date, Aerial Photography: 2010
Date, Map: 7/5/2017
Scale: 1" = 100'